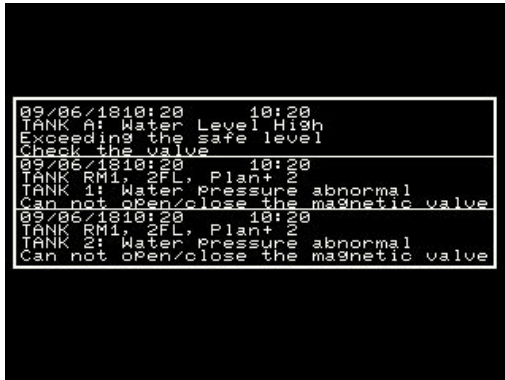


["Alarm Multiple Line Display" Settings Procedure]

Explain as the example of the following "Alarm Multiple Line Display" settings.

Completion Image of

[Alarm Multiple Line Display] Set Up

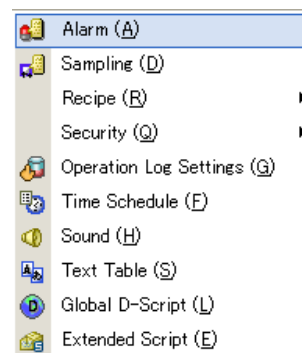


Main Set Up of [Alarm Parts]

- Message Display Method: Multiple Line Display
- Number of Alarm Message Lines: 3
- Number of Display Alarms: 3
- Display Row Spacing: 1
- Number of Message Display Characters: 37
- Border Display: Border with horizontal lines

1 Select Alarm Settings

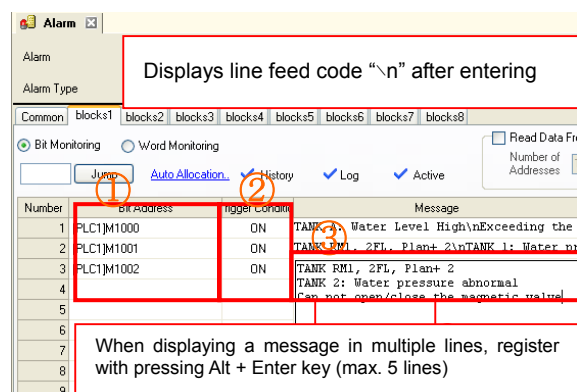
Select [Alarm] from
[Common Settings] in the menu bar.



2 Settings of Bit Monitor of Block 1

Select [Block 1]

1. Set up the bit address that monitors the alarm trigger in [Bit Address].
2. Select the alarm trigger when Bit Address Monitoring is ON in [Trigger Condition].
3. Enter the alarm messages that are displayed when triggering an alarm in [Message].



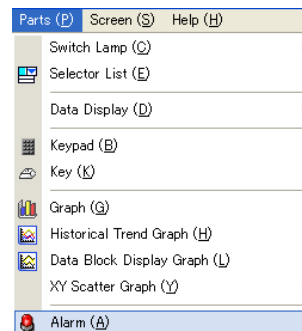
Notes

- Set up max. 160 characters x 5 lines in a single byte for each message.

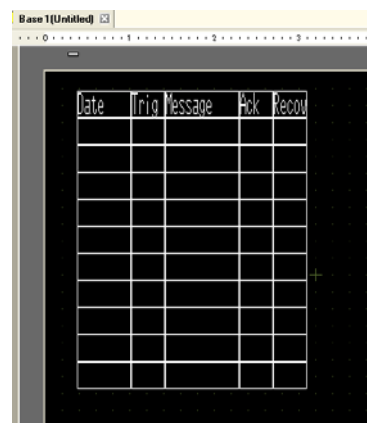
The maximum number of displayed characters in one line, however, is settled according to models, and the font size, set in [Display Font] of [Alarm Parts].

3 Select/Arrange Alarm

1. Select [Alarm] from [Parts] in the menu bar.



2. Place an alarm on a screen.



4 Basic Settings

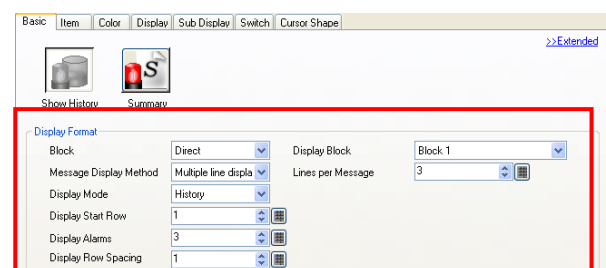
Double-click on the placed alarm parts,
and set up each category as follows:

[Message Display Method]: [Multiple
line display]

[Lines per Message]: [3]

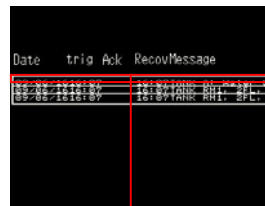
[Display Alarms]: [3]

[Display Row Spacing]: [1]



Notes

- Message Display Method: Set up the display method of Alarm Message [1 Line Display]: An alarm message is displayed in a single line with other items, such as date or alarm trigger time. [Multiple Line Display]: An alarm message is displayed in multiple lines, separate from other items, such as date or alarm trigger time.



Date	trig	Ack	Recov	Message
09/06/1810:20	10:20			TANK A1 Water Level High
09/06/1810:20	10:20			Exceeding the safe level
09/06/1810:20	10:20			Check the valve
09/06/1810:20	10:20			TANK B1 Water Pressure abnormal
09/06/1810:20	10:20			Can not open/close the magnetic valve
09/06/1810:20	10:20			TANK B1 Water Pressure abnormal
09/06/1810:20	10:20			Can not open/close the magnetic value

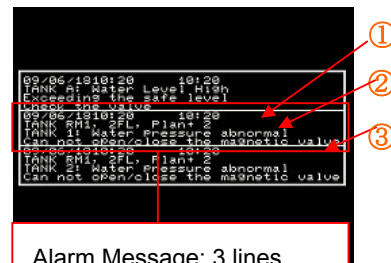
Single Line Display



Date	trig	Ack	Recov	Message
09/06/1810:20	10:20			TANK A1 Water Level High
09/06/1810:20	10:20			Exceeding the safe level
09/06/1810:20	10:20			Check the valve
09/06/1810:20	10:20			TANK B1 Water Pressure abnormal
09/06/1810:20	10:20			Can not open/close the magnetic value
09/06/1810:20	10:20			TANK B1 Water Pressure abnormal
09/06/1810:20	10:20			Can not open/close the magnetic value

Multiple Line Display

- Lines per Message: Set up max. 5 lines for the number of message display line when [Multiple Line Display] is selected in [Message Display Method].



Date	trig	Ack	Recov	Message
09/06/1810:20	10:20			TANK A1 Water Level High
09/06/1810:20	10:20			Exceeding the safe level
09/06/1810:20	10:20			Check the valve
09/06/1810:20	10:20			TANK B1 Water Pressure abnormal
09/06/1810:20	10:20			Can not open/close the magnetic value
09/06/1810:20	10:20			TANK B1 Water Pressure abnormal
09/06/1810:20	10:20			Can not open/close the magnetic value

Alarm Message: 3 lines

- Display Alarms: Set up displayed alarms to 50 alarms max, but the maximum number of alarms displayed in one screen is settled according to models, message line numbers, display row spacing, and the settings of font size.



Date	trig	Ack	Recov	Message
09/06/1810:20	10:20			TANK A1 Water Level High
09/06/1810:20	10:20			Exceeding the safe level
09/06/1810:20	10:20			Check the valve
09/06/1810:20	10:20			TANK B1 Water Pressure abnormal
09/06/1810:20	10:20			Can not open/close the magnetic value
09/06/1810:20	10:20			TANK B1 Water Pressure abnormal
09/06/1810:20	10:20			Can not open/close the magnetic value

Display Alarm: 3

- Display Row Spacing: Set up the dot number, 0 to 7, for row spacing between display alarm messages.

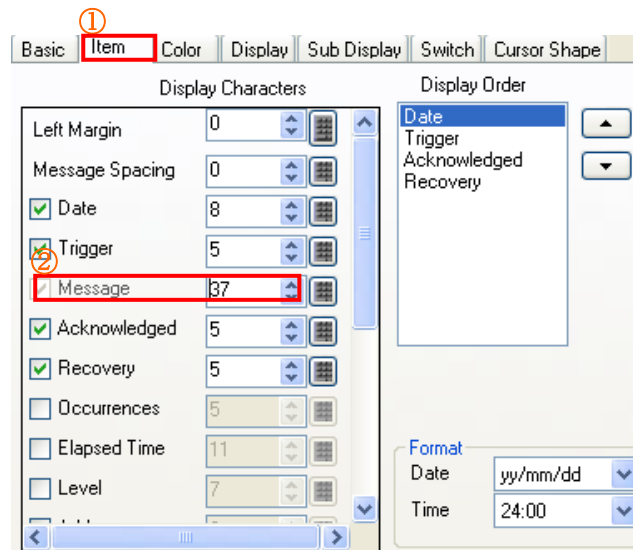
Display Row Spacing between messages: 1



Date	trig	Ack	Recov	Message
09/06/1810:20	10:20			TANK A1 Water Level High
09/06/1810:20	10:20			Exceeding the safe level
09/06/1810:20	10:20			Check the valve
09/06/1810:20	10:20			TANK B1 Water Pressure abnormal
09/06/1810:20	10:20			Can not open/close the magnetic value
09/06/1810:20	10:20			TANK B1 Water Pressure abnormal
09/06/1810:20	10:20			Can not open/close the magnetic value

5 Item Settings

1. Click [Item].
2. Set [37] for Display Character in [Message].

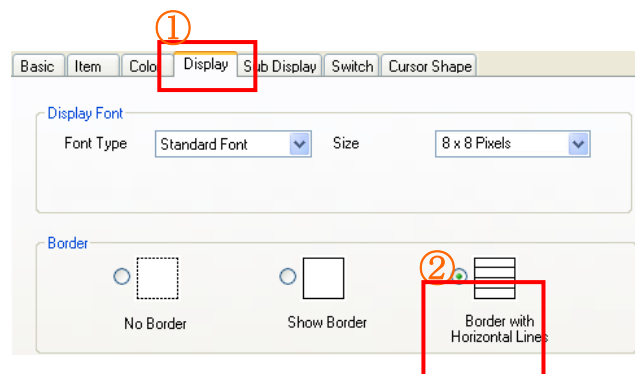


Notes

- Message Display Character: the number of message display characters can be set up to max. 160 characters in a single byte.
- The maximum display character is settled according to models, and font size, set in [Display Font] of [Alarm Parts].

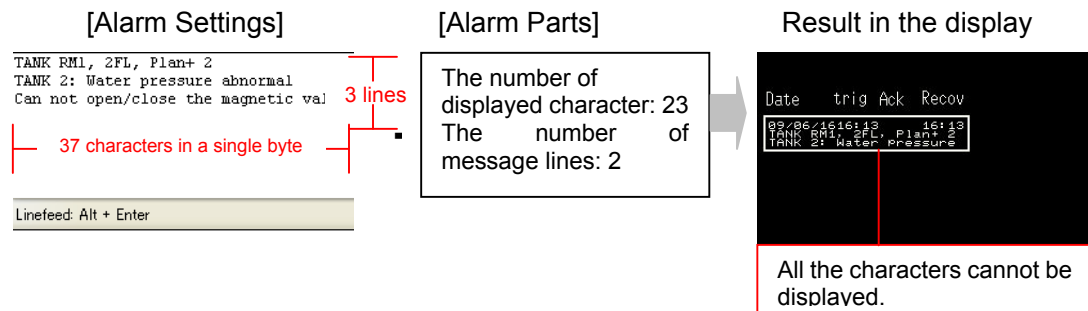
6 Display Settings

1. Click [Display Settings].
2. Select [Border with Horizontal Line].



About the result of alarm message in the display

- When the number of message characters and lines, set in the procedure 2, is **more** than the number of message display characters (Procedure 5) and lines (Procedure 4), set in [Alarm Parts], some characters cannot be displayed.



- When the number of message characters and lines, set in the procedure 2, is **less** than the number of message display characters (Procedure 5) and lines (Procedure 4), set in [Alarm Parts], the blank will be displayed for the remaining space.

