

# 11



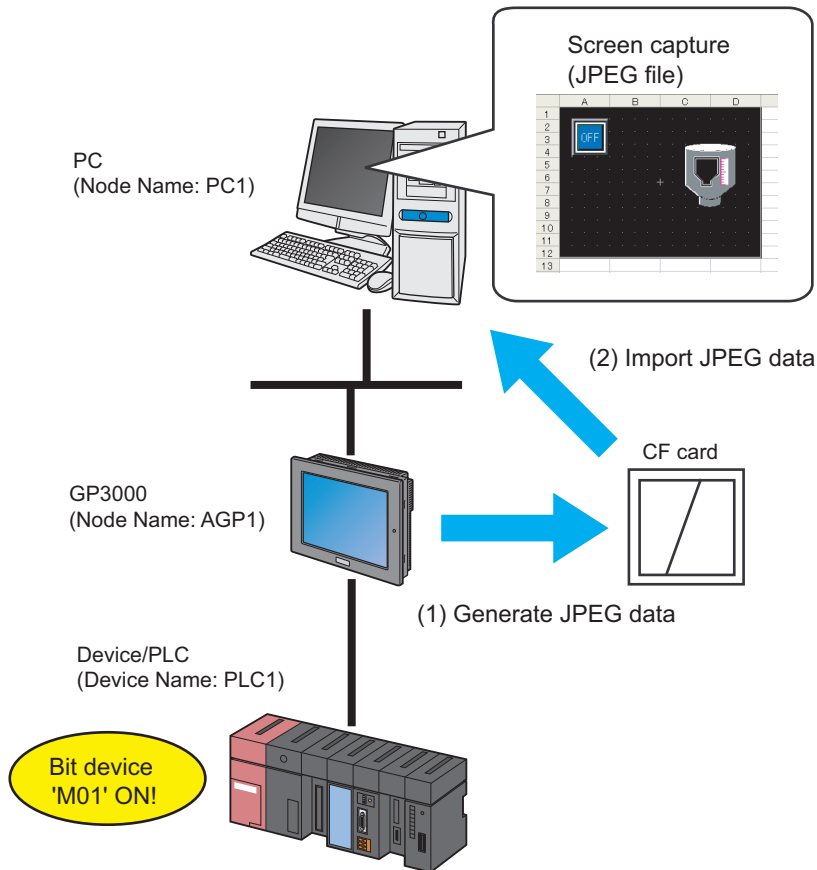
## Importing the display unit's Capture Data (JPEG)

|      |                                 |       |
|------|---------------------------------|-------|
| 11.1 | Capturing at Preset Timing..... | 11-2  |
| 11.2 | Capturing Right Now.....        | 11-22 |
| 11.3 | Restrictions .....              | 11-26 |

## 11.1 Capturing at Preset Timing

[Action Example]

Detect the rising of the device (bit device: address "M01") of Device/PLC, save captured screens (JPEG data) in a CF card of the display unit, and upload to PC.



This section describes the setting procedures for executing the above action (ACTION) as an example.

**NOTE** • To capture the screens, install a CF card in the display unit.

## [Setting Procedure]

|    |   |  |
|----|---|--|
| 1  | Starting 'Pro-Studio EX' (page11-4)                             | This step starts 'Pro-Studio EX'.  |
| 2  | Registering Entry Nodes (page11-4)                              | This step registers the PC and the display units as entry nodes.   |
| 3  | Registering Symbols (page11-5)                                  | This step registers as a symbol the device of Device/PLC which serves as a trigger condition (trigger).  |
| 4  | Parameter Setting for Feature (ACTION) (page11-6)               | This step sets the following items: <ul style="list-style-type: none"> <li>• Capture Data Selection</li> <li>• File Specification</li> </ul>                     |
| 5  | Setting Trigger Conditions (page11-10)                          | This step sets conditions (trigger) for screen captures.   |
| 6  | Setting Data Received by ACTION (page11-13)                     | This step sets data to transfer.   |
| 7  | Setting ACTION Node/Process Completion Notification (page11-14) | This step sets the name of an ACTION node and the alert setting whether it should be tuned on or off when the ACTION is completed.                               |
| 8  | Verifying Setting Result (page11-16)                            | This step verifies setting results on the setting content list screen.   |
| 9  | Saving a Network Project File (page11-18)                       | This step saves the current settings as a network project file and reloads.  |
| 10 | Transferring a Network Project File (page11-18)                 | This step transfers a saved network project file to the display unit.  |
| 11 | Executing ACTION (page11-19)                                    | This step verifies that captured data (JPEG) of display unit screens are saved in the specified location when the preset trigger condition has become effective. |

■ Starting 'Pro-Studio EX'

This step starts 'Pro-Studio EX'.

Refer to "3 Trial of Pro-Server EX" for details about starting method.

■ Registering Entry Nodes

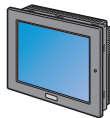
This step registers the PC and the display unit connected with network as nodes.

Refer to "31 Node Registration" for details about entry nodes.



Node Name :PC1

IP Address :192.168.0.1



Node Name :AGP1

IP Address :192.168.0.100

Device/PLC Information

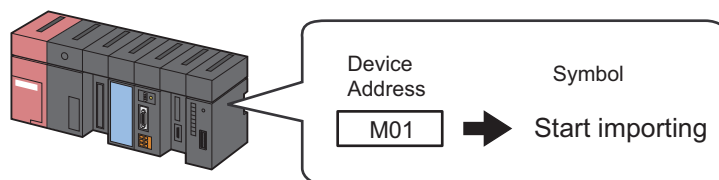
Ex.

| Entry Node   | Setting item | Setting example |
|--------------|--------------|-----------------|
| PC           | Node Name    | PC1             |
|              | IP Address   | 192.168.0.1     |
| Display Unit | Type         | GP3000 series   |
|              | Node Name    | AGP1            |
|              | IP Address   | 192.168.0.100   |

## ■ Registering Symbols

This step registers as a symbol the device address of Device/PLC from which data is read.

Refer to "32 Symbol Registration" for details about symbols.



Ex.

| Setting item                           | Setting content           |
|--|---------------------------|
| Symbol Name                            | Start importing           |
| Data Type                              | Bit                       |
| Device address for symbol registration | "01" of Device/PLC (PLC1) |
| No. of Devices                         | 1                         |

## ■ Parameter Setting for Feature (ACTION)

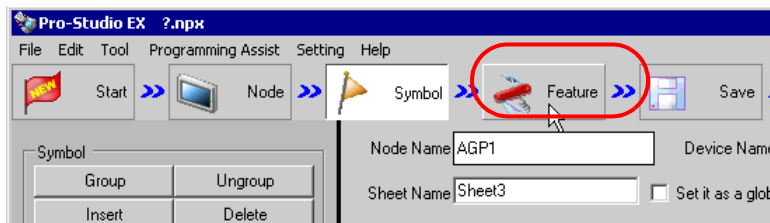
Make settings to capture data. (parameter settings)

Refer to "11.1.1 Setting Guide" for more details about ACTION parameters.

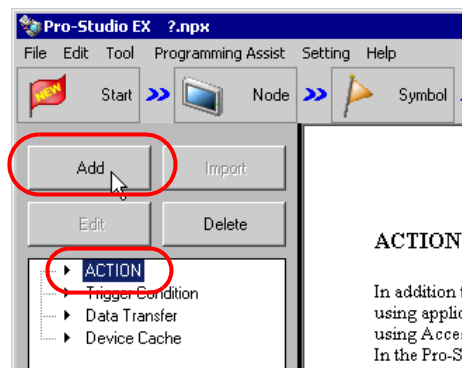
Ex.

| Setting item                           | Setting content                                 |
|--|---|
| Capture Data Selection                 | GP Capture Data                                 |
| Save File                              | C:\Documents and Settings\Administrator\Desktop |
| Saved File Name                        | %NODE%Y%M%D%h%m%s                               |
| Zero Suppress                          | OFF   |
| When the same file name already exists | Save Rewrite                                    |
| Show Browser                           | OFF   |

- 1 Click the [Feature] icon on the toolbar.

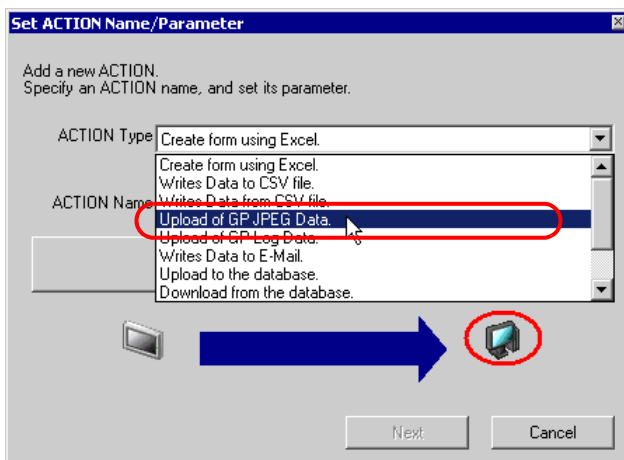


- 2 Select [ACTION] from the tree display on the left of the screen, then click the [Add] button.

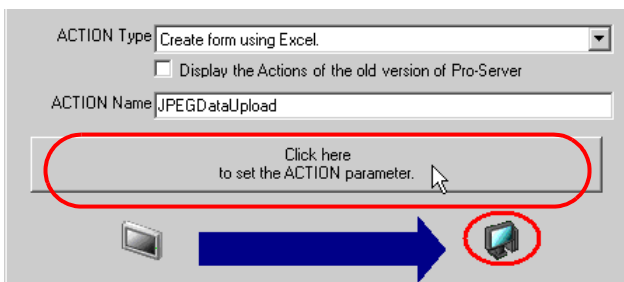


3 Click the [ACTION Type] list button, and select "Upload of GP JPEG Data".

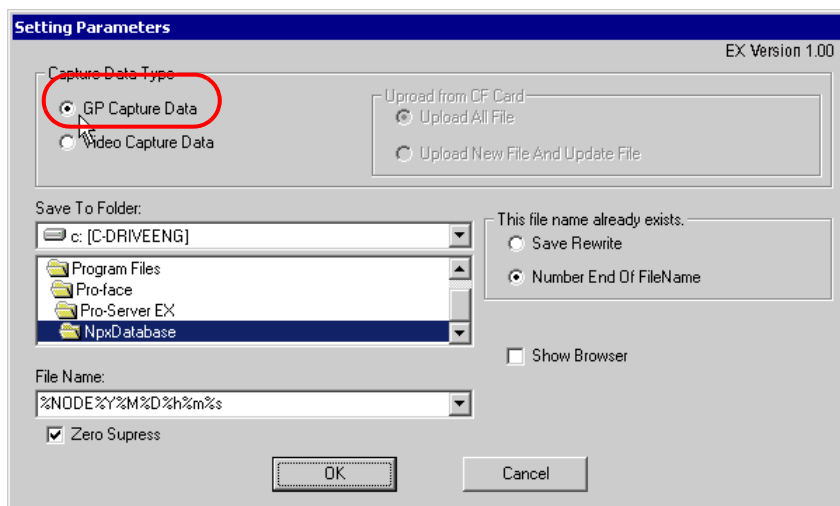
Then, enter the name of ACTION to set in the [ACTION Name] field. In this example, enter "JPEG Data Upload".



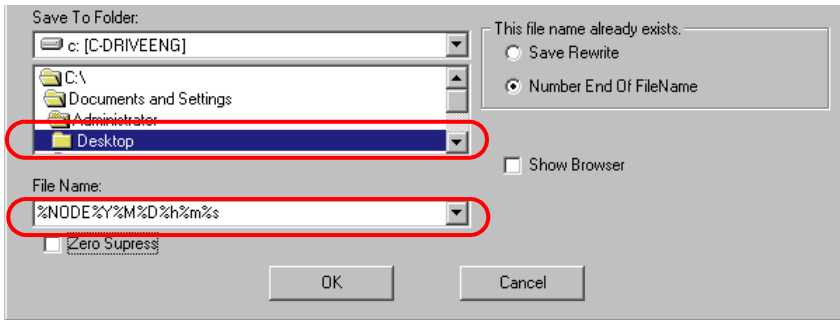
4 Click the [Click here to set the ACTION parameter] button.



5 Check [GP Capture Data] in [Capture Data Type].



- Set "Desktop" for [Save To Folder] as a folder to store the file to write data in, with the default file name "%NODE%Y%M%D%h%m%s".



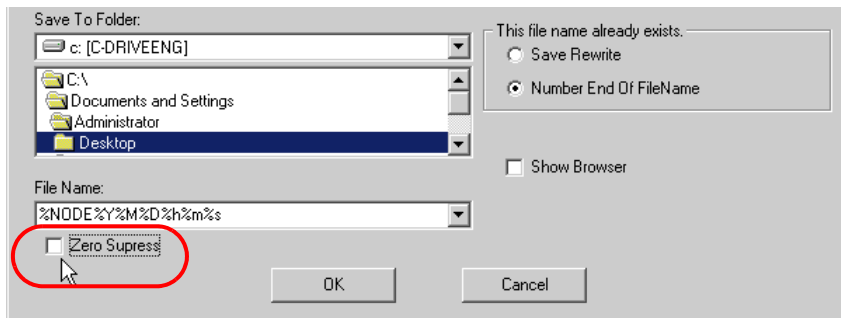
What is %NODE%Y%M%D%h%m%s?

%NODE%Y%M%D%h%m%s refers to the node where and the time when data has been captured and this is saved in the format of "Node\_Year\_Month\_Date\_Hour/Minute/Second".

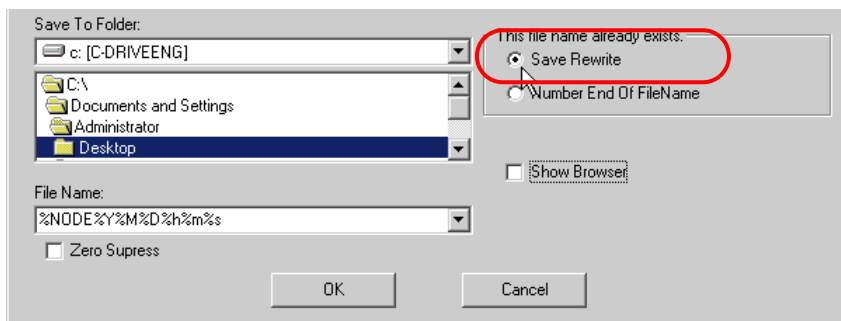
(Example) The file name for which data was captured from the node "AGP1" at 9:50:15 on Feb, 15, 2006 becomes "AGP1\_2006\_02\_15\_095015".

Refer to "37.1 Restrictions on Names" for more details.

- Turn off the [Zero Suppress] check box, if checked.

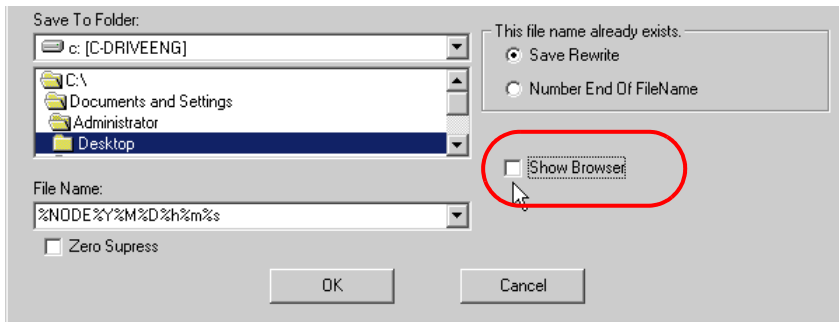


- Select [Save Rewrite] in [This file name already exists.].





9 Turn off the [Show Browser] check box, if checked.



10 Click the [OK] button.

This is the end of the feature (ACTION) settings.

## ■ Setting Trigger Conditions

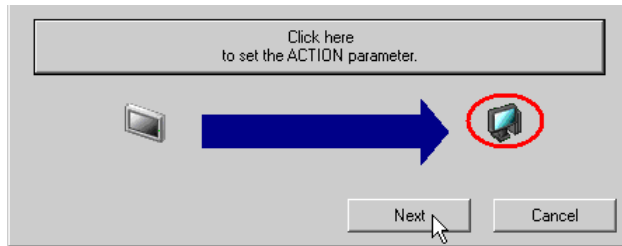
This step sets conditions (trigger bit ON) for screen captures.

Refer to "33 Trigger Conditions" for details about trigger conditions.

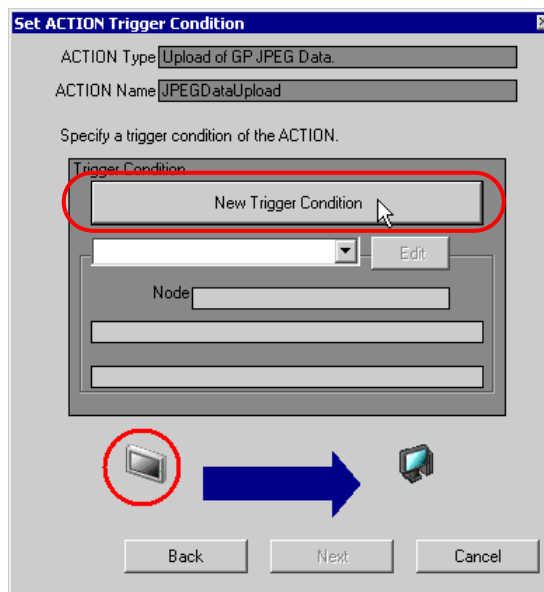
### [Setting Example]

- Trigger Condition Name: Turn on capture start bit
- Trigger Condition : When "Start capturing" (M01) is ON

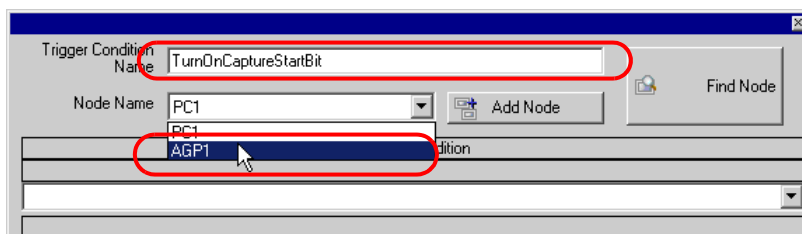
1 On the "Set ACTION Name/Parameter" screen, click the [Next] button.



2 Click the [New Trigger Condition] button.



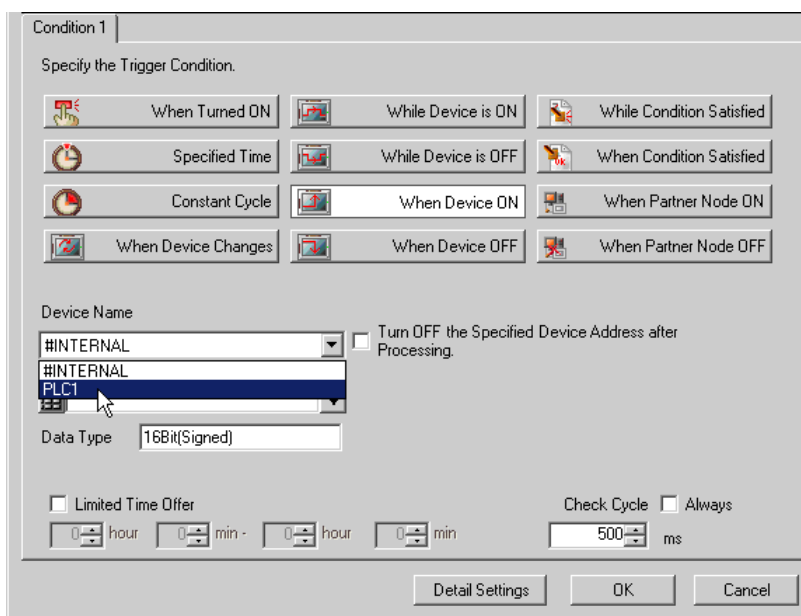
- 3 Enter the trigger condition name "TurnOnCaptureStartBit" in [Trigger Condition Name], and select "AGP1" in [Node Name] which has the device to serve as the trigger condition.



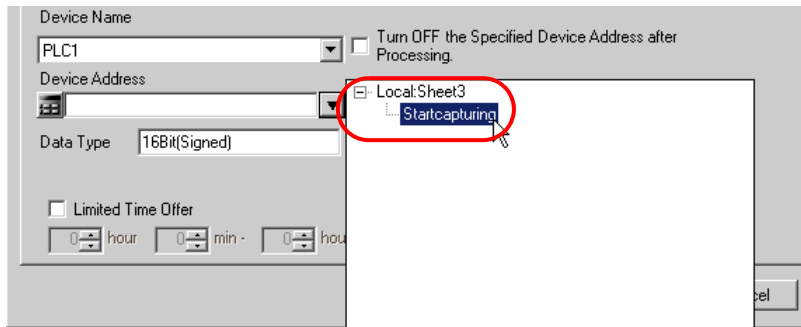
**NOTE** • Here, you are to specify the node having the device to be the trigger condition.

☞ "33 Trigger Conditions"

- 4 Click the [When Device ON] button in the [Condition 1] tab and select "PLC1" for the device name.



5 Click the [Device Address] list button and select "Start capturing" for the device symbol name which serves as the trigger.



[Data Type] automatically appears after selection, too.

---

**NOTE** • You can also set trigger conditions by combining 2 different types of conditions ("And" condition or "Or" condition).

☞ "33 Trigger Conditions"

---

6 Click the [OK] button.

This is the end of trigger condition settings.

## ■ Setting Data Received by ACTION

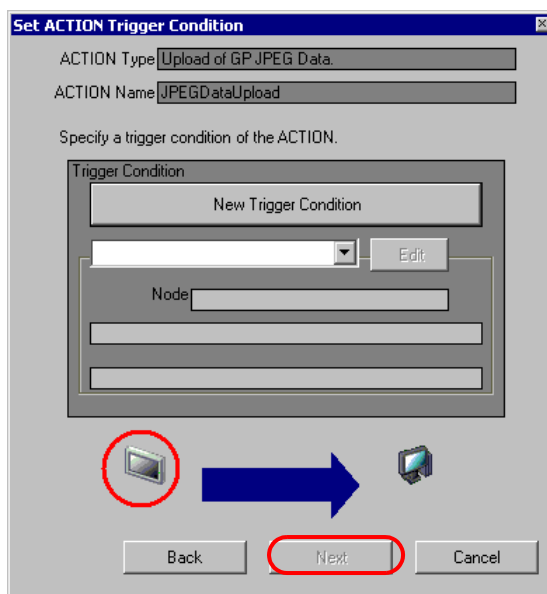
This step sets data to transfer in ACTION.

Any constant value is acceptable as data to transfer.

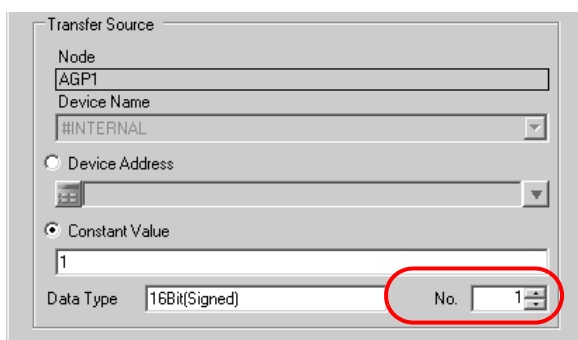
Ex.

- Constant value to transfer: 1

1 On the "Set ACTION Trigger Condition" screen, click the [Next] button.



2 After clicking [Constant Value], enter "1" in the text box for the constant value to transfer and "1" in [No.].



**NOTE** • You can transfer stored values as data by specifying a symbol or a device address.

This is the end of the setting of data received by ACTION.

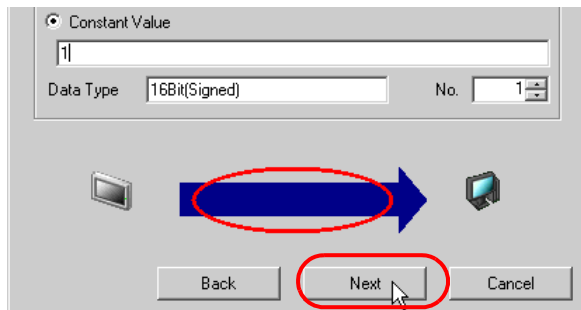
## ■ Setting ACTION Node/Process Completion Notification

This step sets the name of an ACTION node and the alert setting whether it should be tuned on or off when the ACTION is completed.

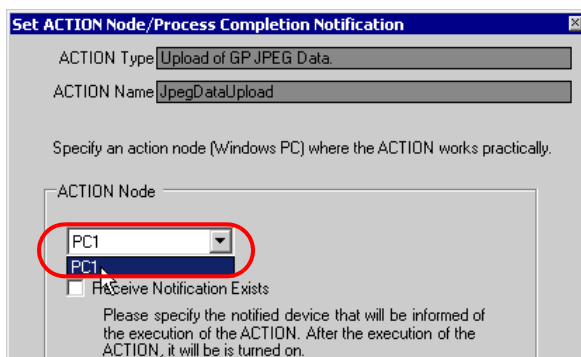
**Ex.**

- ACTION Node : PC1
- Receive Notification: OFF

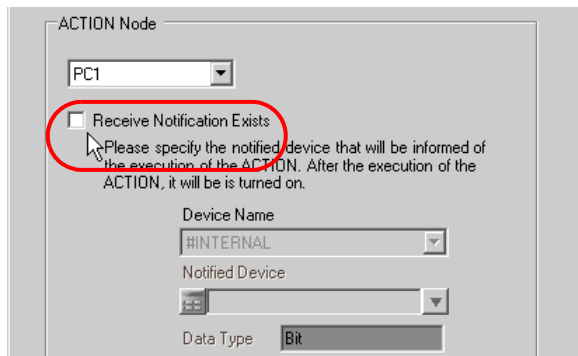
1 On the "Data settings to be received by ACTION" screen, click the [Next] button.



2 Click the list button of [ACTION Node] and select "PC1" as a node where ACTION operates.



- 3 Turn off the [Receive Notification Exists] check box, if checked.



ACTION Node

PC1

Receive Notification Exists

Please specify the notified device that will be informed of the execution of the ACTION. After the execution of the ACTION, it will be is turned on.

Device Name: #INTERNAL

Notified Device:

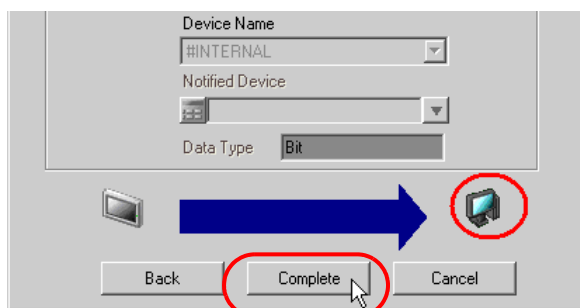
Data Type: Bit

- NOTE** • When "Receive Notification Exists" is turned on, the specified bit device will be turned on when the ACTION is completed. This can be used as a trigger condition (trigger) of the subsequent ACTION when you want to execute two or more ACTIONs sequentially.

 "33 Trigger Conditions"

- 4 Click the [Complete] button.

The "Set ACTION Node/Process Completion Notification" screen will disappear. On the left of the screen, the name of ACTION you set will appear.



Device Name: #INTERNAL

Notified Device:

Data Type: Bit

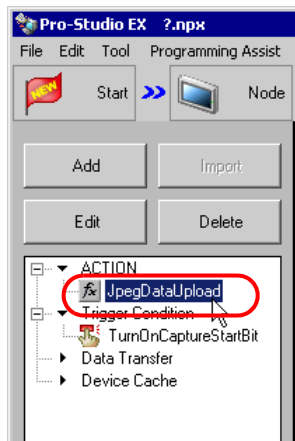
Back Complete Cancel

This is the end of the settings of the ACTION node and process completion notification.

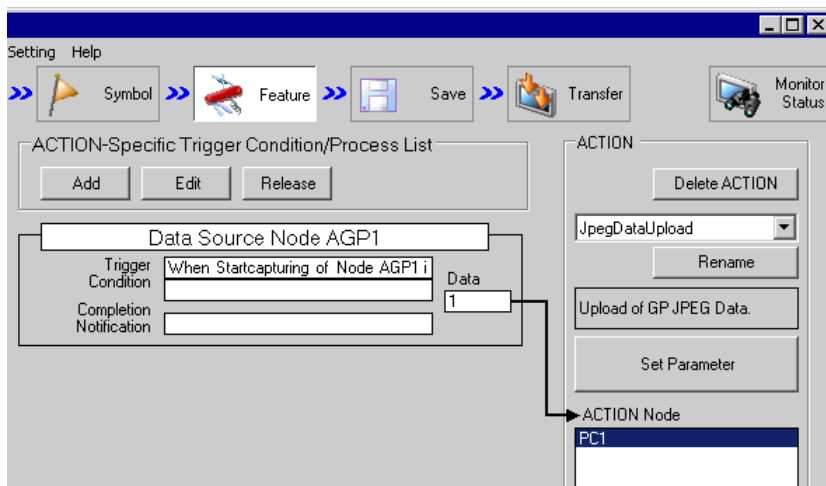
## ■ Verifying Setting Result

This step verifies setting results on the setting content list screen.

- 1 Select the ACTION name "JPEG Data Upload" from the tree display on the left of the screen.

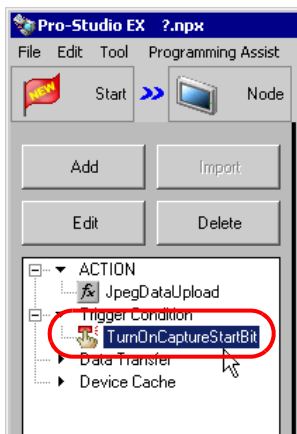


Confirm that the setting content appears on the right of the screen.

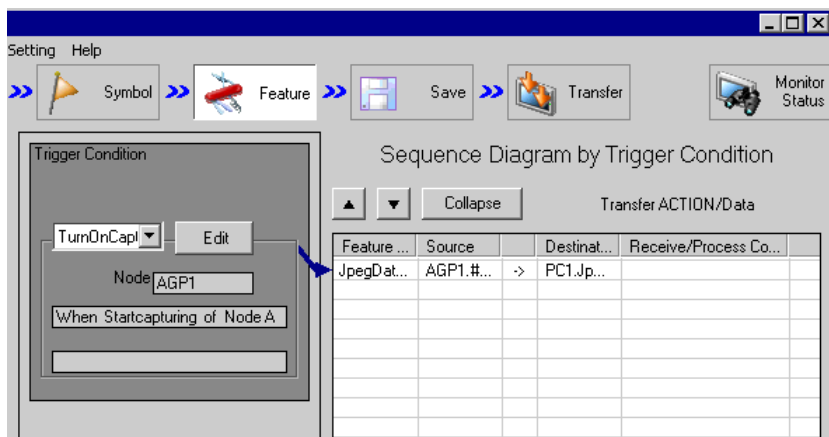




- 2 Select the trigger condition name "TurnOnCaptureStartBit" from the tree display on the left of the screen.



Confirm that the setting content appears on the right of the screen.



This is the end of the verification of the settings.

## ■ Saving a Network Project File

This step saves the current settings as a network project file and reloads to 'Pro-Server EX'.

Refer to "25 Saving" for details about saving a network project file.

---

**IMPORTANT**

- 'Pro-Server EX' reads a created network project file, and then executes ACTION according to the settings in the file. The settings therefore need be saved in the network project file.
  - Be sure to reload the network project file to 'Pro-Server EX' If not, ACTION will not work.
- 

### Ex.

- Path of network project file : Desktop\capture.npx
- Title : JPEG upload action

## ■ Transferring a Network Project File

This step loads a saved network project file to 'Pro-Server EX' and then transfers to entry nodes.

Refer to "26 Transferring" for details about transferring a network project file.

---

**NOTE**

- Be sure to transfer a network project file. If not, ACTION will not work.
-

## ■ Executing ACTION

This step verifies that enabling a trigger condition activates ACTION and saves the capture data in the specified location.

- 
- IMPORTANT**
- To capture the display unit screen, turn ON the bit 0 for internal device LS2076 in the display unit. While capturing, the bit 0 for LS2077 is turned ON. It is turned OFF when capturing finishes.
- 

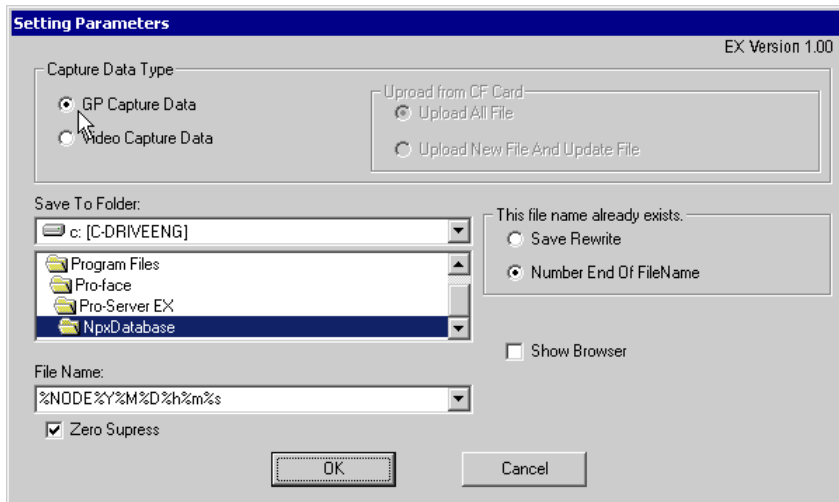


- 
- NOTE**
- If error occurs, you can check the log in the Log Viewer. For more details, refer to "28.5 Monitoring System Event Logs".
  - If you want to achieve faster communication during ACTION, refer to "29 Tips for Faster Communication".
- 

This is the end of the explanation of this ACTION.

### 11.1.1 Setting Guide

This section explains how to set the parameters of ACTION.



| Setting item        | Setting content  |
|---------------------|--|
| Capture Data Type   | <p>Selects data to capture.</p> <ul style="list-style-type: none"> <li>• GP Capture Data</li> </ul> <p>Captures a display unit screen and uploads.</p> <ul style="list-style-type: none"> <li>• Video Capture Data</li> </ul> <p>Uploads video data which has already been saved in a CF/SD card of display unit. In this case, you cannot set each item of [File Name], [Zero Suppress] and [Show Browser]. Also, you cannot upload more than 32767 JPEG files at one time.</p> |
| Upload from CF-Card | <p>If you select [Video Capture Data] for [Capture Data Selection], you are to select whether to upload all video data in a CF/SD card or only the file(s) not existing or updated in the directory to set in [Save].</p>  |
| Save To Folder      | <p>Selects a save folder for captured data.</p> <p>C drive (C:) folder is to appear for initial setting.</p> <p>To change the drive to display, click the list button to select new one.</p>   |
| File Name           | <p>Sets the file name to save.</p> <p>"%NODE%Y%M%D%h%m%s" is to appear for initial setting. ("%NODE" indicates a node name.)</p> <p><b>NOTE</b></p> <ul style="list-style-type: none"> <li>• By specifying a macro code for the file name to save, you can set the file name as a node name or device data.</li> </ul> <p>☞ 37.1 Restrictions on Names</p>   |
| Zero Suppress       | <p>If you set the save file name as "%NODE%Y%M%D%h%m%s" and check this item, the digit 0 is not displayed.</p> <p>(Example)</p> <p>File name which is written at 7:31 when specifying the save file name as "%h%m"</p> <p>Checked: ..._7_31...xls</p> <p>Not checked: .._07_31...xls</p>   |

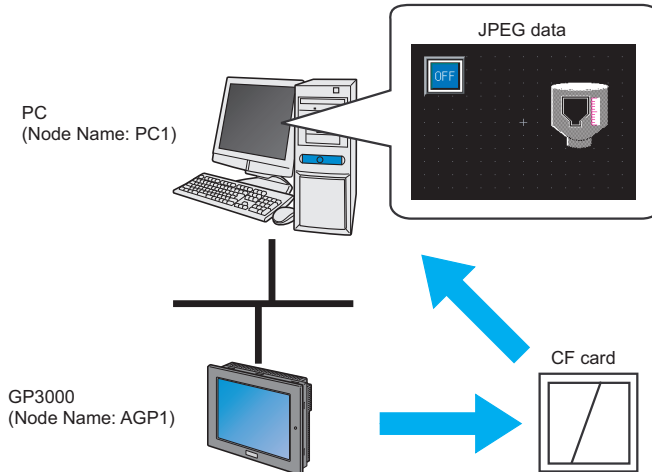
---

| Setting item                   | Setting content  |
|--------------------------------|--|
| This file name already exists. | To overwrite save, check [Save Rewrite]. If not, check [Number End of File Name].  |
| Show Browser                   | Shows captured data on an exclusive JPEG file browser.<br>You can display it with Viewers, such as 'Microsoft <sup>(R)</sup> Internet Explorer <sup>(R)</sup> ' and 'Paint', related to print, copy, and JPEG files. |

## 11.2 Capturing Right Now

[Action Example]

Save capture data displayed on currently operating display unit.



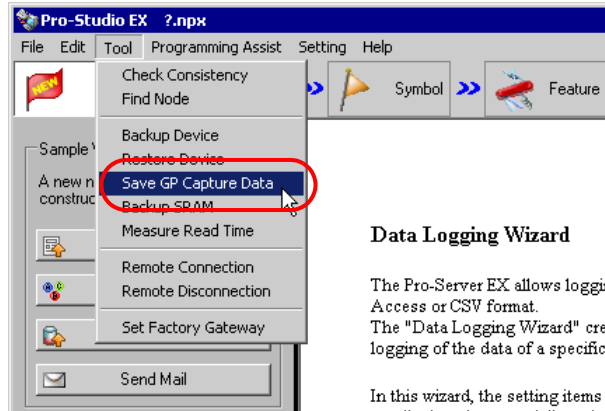
This section describes the setting procedures for executing the above action (ACTION) as an example.

**NOTE**

- To capture the screens, install a CF card in the display unit.
- To use this function, you need to set using the network project file which 'Pro-Server EX' loads. You can confirm which network project file is loaded by 'Pro-Server EX' in Status Monitor Menu.

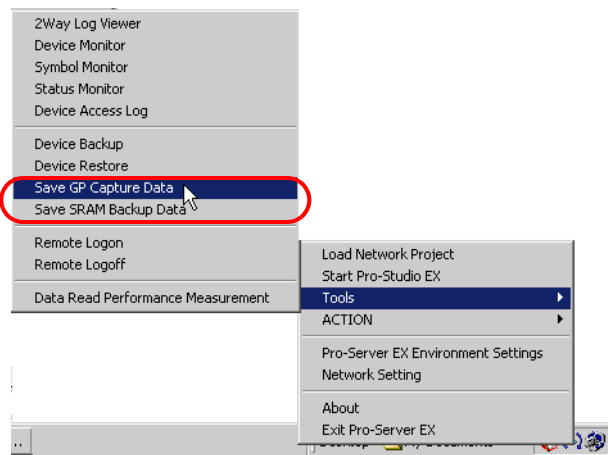
☞ "28.5 Monitoring System Event Logs"

1 Click [Save GP Capture Data] from [Tools] on the menu bar.

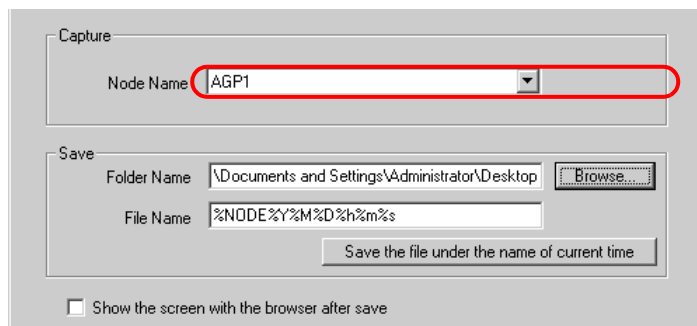


**NOTE**

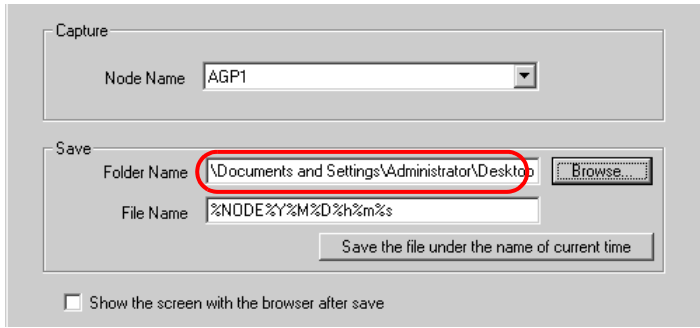
- You can also display the "Save GP Capture Data" screen by right-clicking the tasktray icon and then selecting [Save GP Capture Data] from the menu.



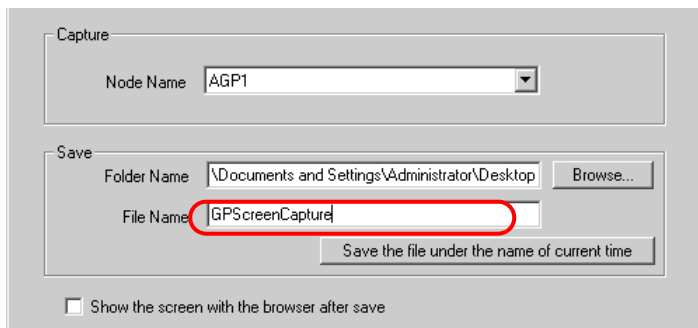
2 Click the list button and select the display unit in which you save captured data.



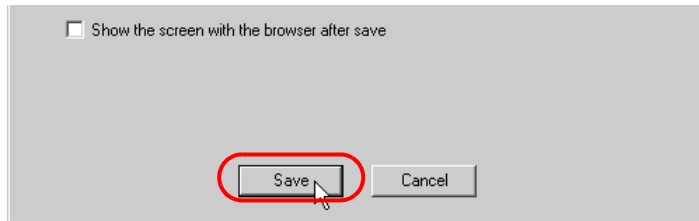
3 Click the [Browse] button and set a folder in [Folder Name] where captured data is saved.



4 Specify a file name in [File Name] for captured data to save.



5 Click the [Save] button.



**IMPORTANT**

- To capture the display unit screen, turn ON the bit 0 for internal device LS2076 in the display unit. While capturing, the bit 0 for LS2077 is turned ON. It is turned OFF when capturing finishes.



## 11.2.1 Setting Guide

## ■ "GP Capture Data Saving" Screen

**Save GP Capture Data**

Capture the screen of the specified node and save it.

**Capture**

Node Name

**Save**

Folder Name

File Name

Show the screen with the browser after save

| Setting item                                |  | Setting content  |
|---|--|--|
| Capture                                     | Node Name                                    | Selects node name of display unit to capture screens.  |
| Save  | Folder Name                                  | Selects a save folder for captured data.<br>C drive (C:) folder is to appear for initial setting.<br>To change the drive to display, click the list button to select new one.  |
|   | File Name                                    | Sets a file name to save.  |
|   | Save the file under the name of current time | Use current time (%NODE%Y%M%D%h%m%s%) for a file name.<br>("%NODE" indicates a node name.)   |
| Show the screen with the browser after save |  | If checked, captured data is shown in a special JPEG file browser.<br>You can display it with Viewers, such as 'Microsoft <sup>(R)</sup> Internet Explorer <sup>(R)</sup> ' and 'Paint', related to print, copy, and JPEG files. |

## 11.3 Restrictions

- You cannot import the display unit's capture data to models without a CF/SD card slot.
- While the screen update load is high on the display unit and Pro-Server EX tries to get a screen capture, the display unit may fail to save the screen capture to JPEG and an error may arise.