

18



Returning Read Filing Data to GP

18.1	Try to Return Read Filing Data to GP	18-2
18.2	Setting Guide	18-20
18.3	Restrictions	18-21

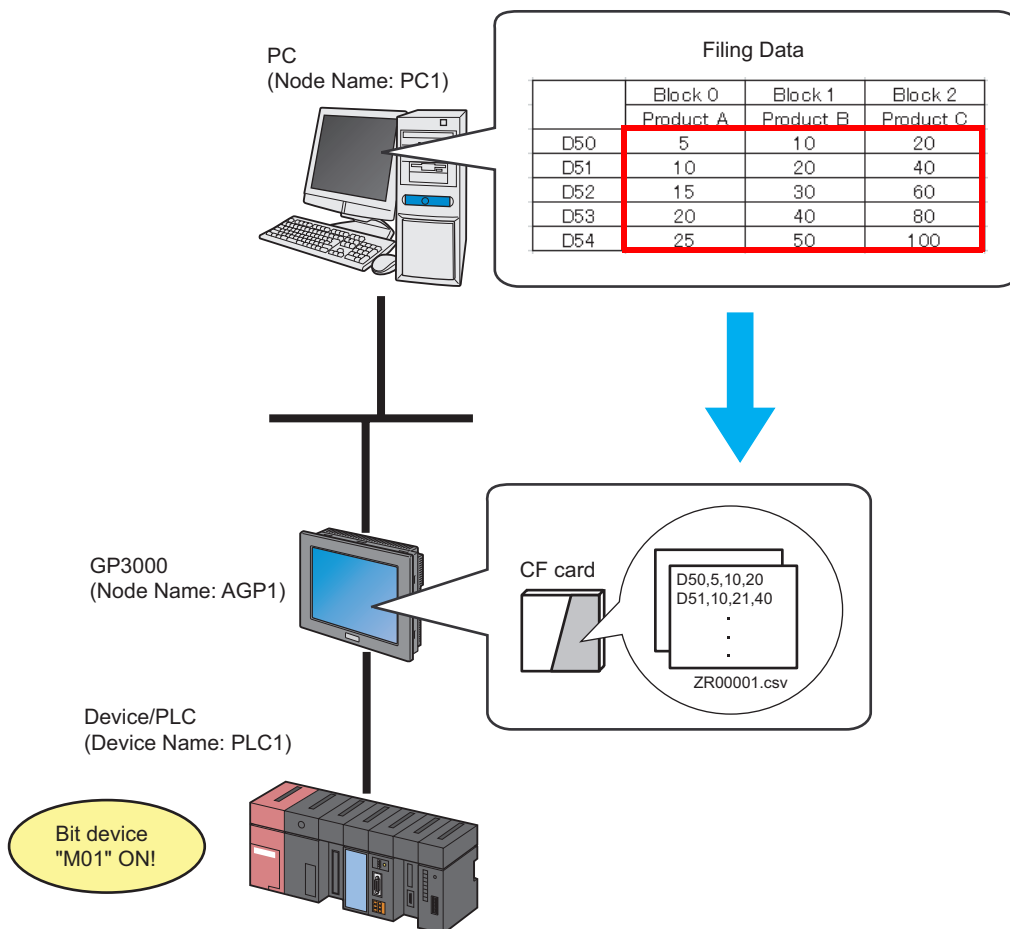
18.1 Try to Return Read Filing Data to GP

NOTE

- Refer to the 'GP-Pro Ex Reference Manual' for more details about filing data.

[Action Example]

Detect the rising of the trigger device (bit device: "M01") of Device/PLC, read out once read Excel filing data, and write the data to the file "ZR00001.csv" in a CF card of GP.

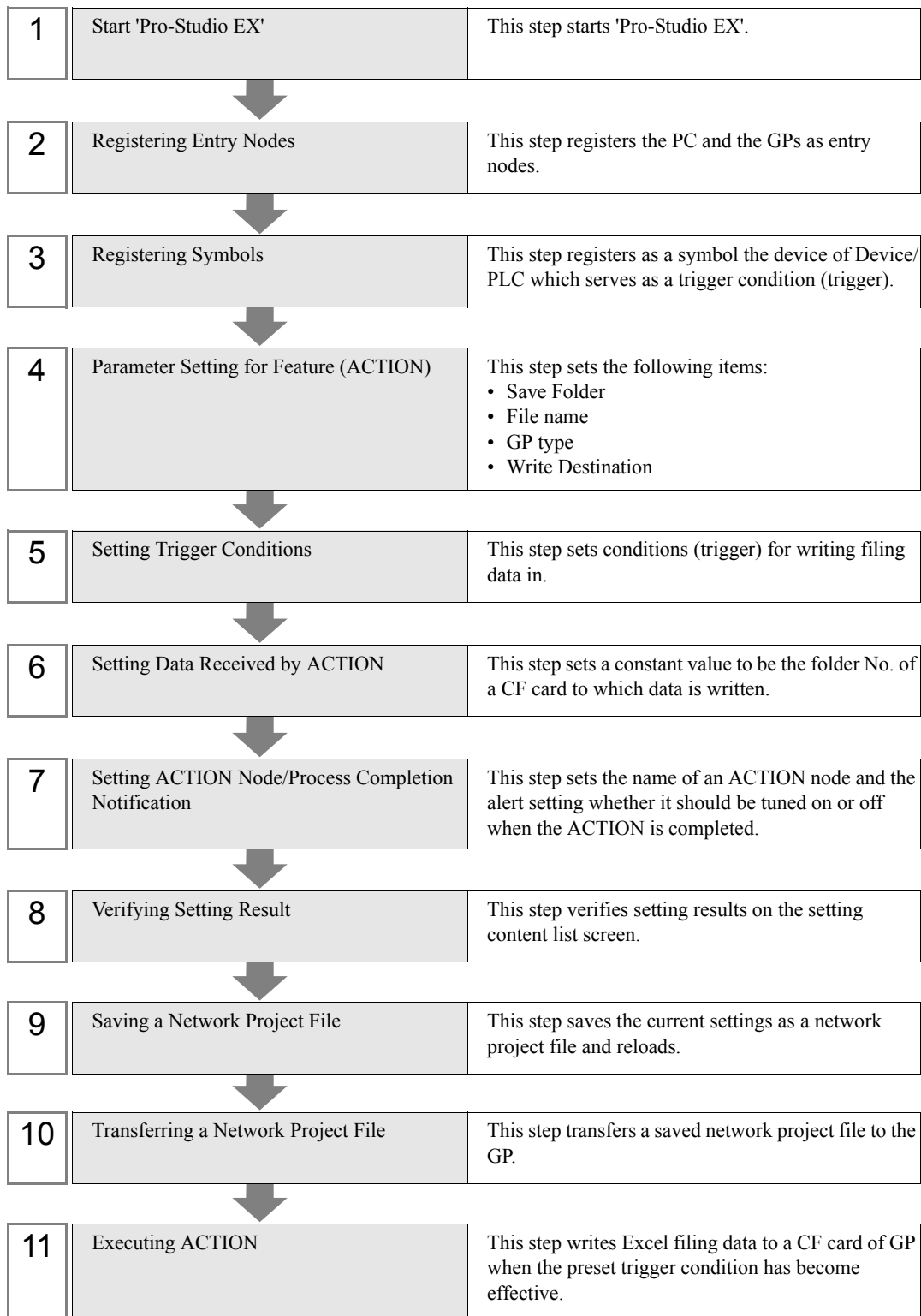


This section describes the setting procedures for executing the above action (ACTION) as an example.

NOTE

- You can download only uploaded data from GP.
- You can return filing data to GP after correction.

[Setting Procedure]



18.1.1 Starting 'Pro-Studio EX'

This step starts 'Pro-Studio EX'.

Refer to "3 Trial of Pro-Server EX" for details about starting method.

18.1.2 Registering Entry Nodes

This step registers the PC and the GP connected with network as nodes.

Refer to "31 Node Registration" for details about entry nodes.



Node Name :PC1
IP Address :192.168.0.1



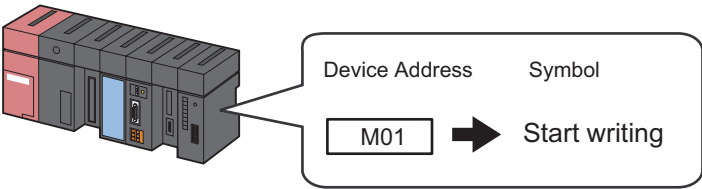
Node Name :AGP1
IP Address :192.168.0.100
Device/PLC Information

Ex.

Entry node	Setting item	Setting example
PC	Node Name	PC1
	IP Address	192.168.0.1
GP	Type	GP3000 series
	Node Name	AGP1
	IP Address	192.168.0.100

18.1.3 Registering Symbols

This step registers as a symbol the device address of Device/PLC which serves as a trigger condition.
Refer to "32 Symbol Registration" for details about symbols.

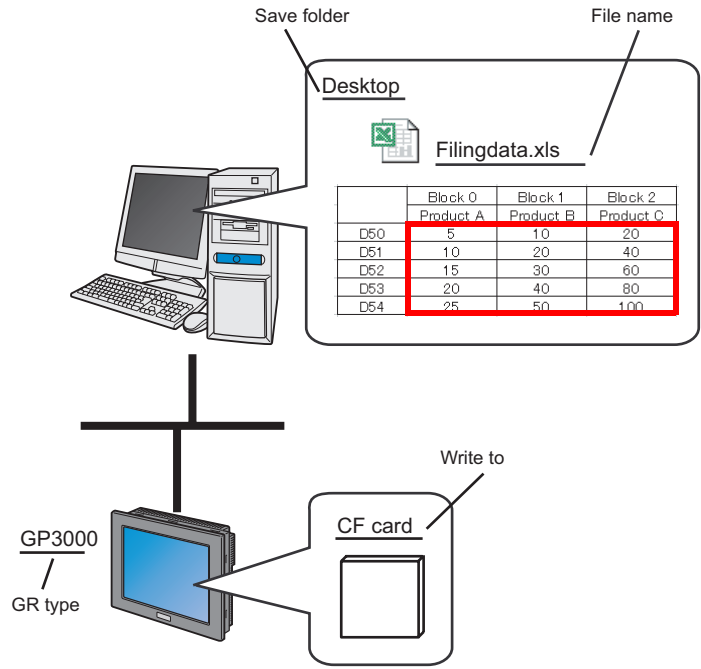


Ex.

Setting item	Setting content
Symbol Name	Start writing
Data Type	Bit
Device address for symbol registration	"M01" of Device/PLC (PLC1)
No. of Devices	1

18.1.4 Parameter Setting for Feature (ACTION)

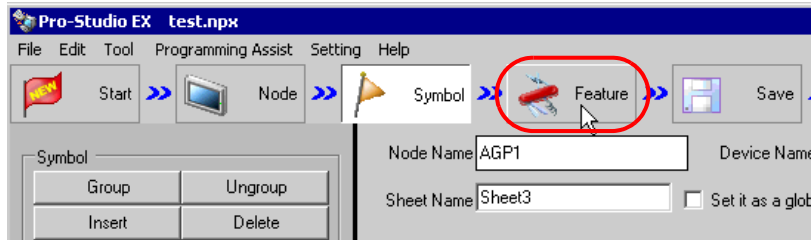
This step makes settings to write filing data in. (parameter settings)
Refer to "18.2 Setting Guide" for more details about ACTION parameters.



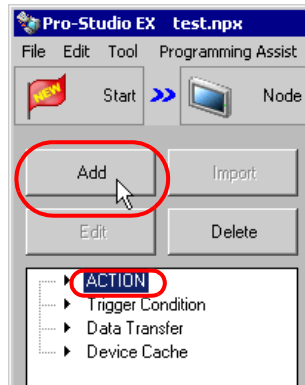
Ex.

Setting item	Setting content
ACTION Name	Filing data download
Save Folder	PC desktop
File name	Filingdata.xls
GP type	GP3000
Write Destination	CF card

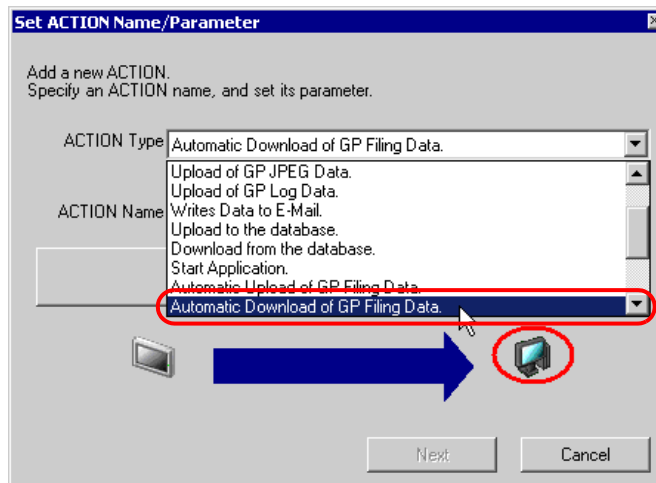
- 1 Click the [Feature] icon on the status bar.



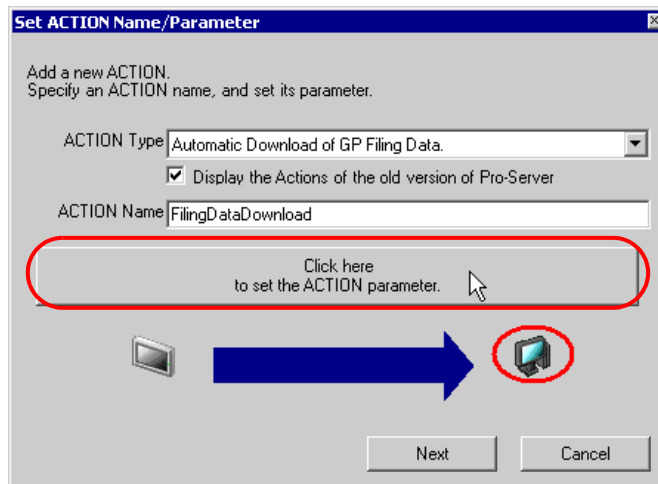
- 2 Select [ACTION] from the tree display on the left of the screen, then click the [Add] button.



- 3 Click the [ACTION Type] list button, and select "Automatic Download of GP Filing Data".
Then, enter the name of ACTION to set in the [ACTION Name] field. In this example, enter "Filing Data Download".

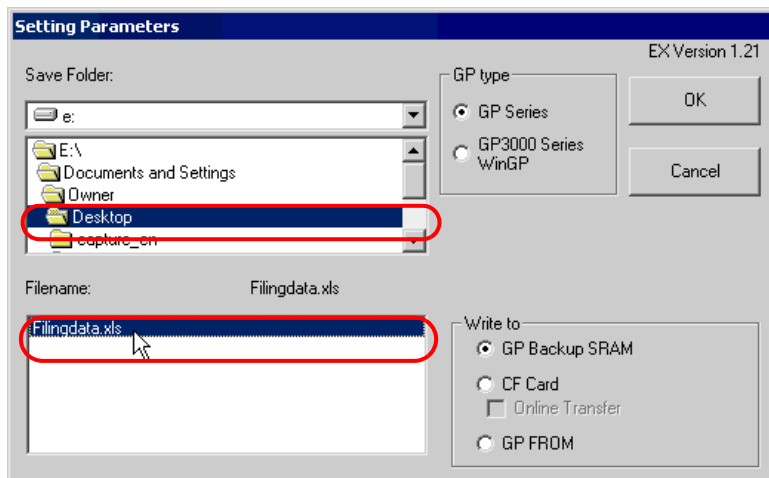


- 4 Click the [Click here to set the ACTION parameter] button.

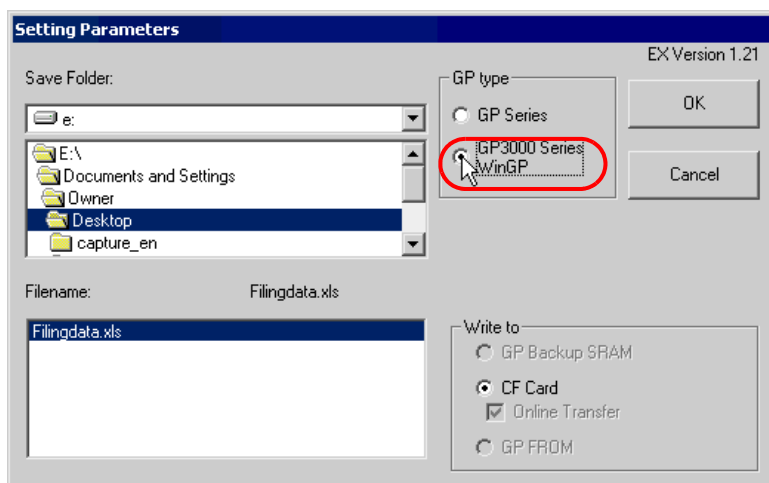


- 5 Select filing data to download.

Set "Desktop" for [Save Folder] as a folder to store the file to read data from, with the file name "Filingdata.xls".



6 Check [GP3000 Series/WinGP] in [GP type].



Write Destination is automatically set to [CF Card].

NOTE • When Write Destination is of GP3000 Series or WinGP, you can only write in CF cards.

7 Click the [OK] button.

This is the end of the feature (ACTION) settings.

18.1.5 Setting Trigger Conditions

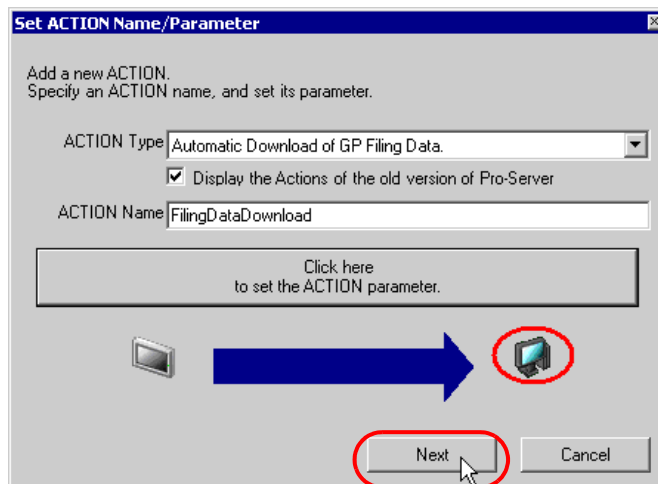
This step sets conditions (trigger bit ON) for writing filing data in.

Refer to "33 Trigger Conditions" for details about trigger conditions.

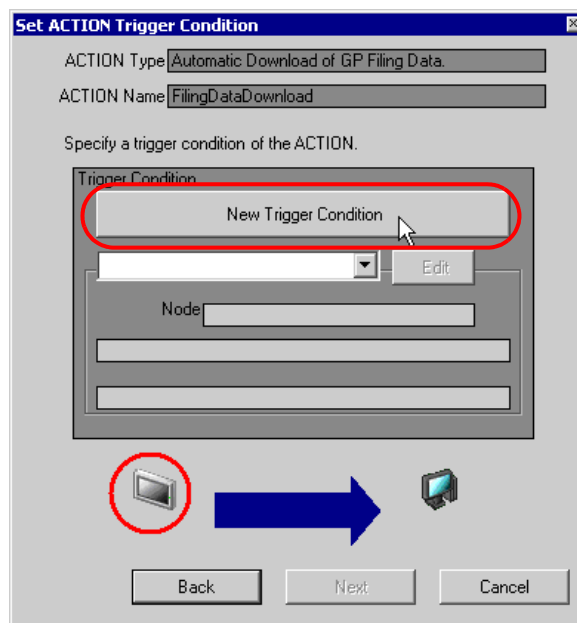
Ex.

- Trigger Condition Name: Turn on write start bit
- Trigger Condition : When "Start writing" (M01) is ON

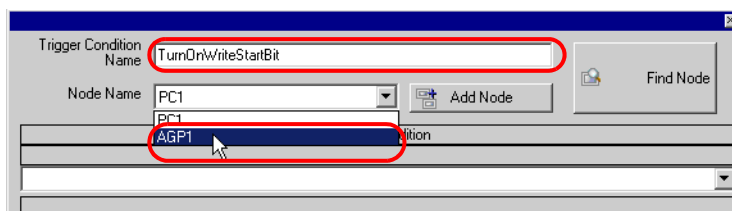
1 On the "Set ACTION Name/Parameter" screen, click the [Next] button.



2 Click the [New Trigger Condition] button.



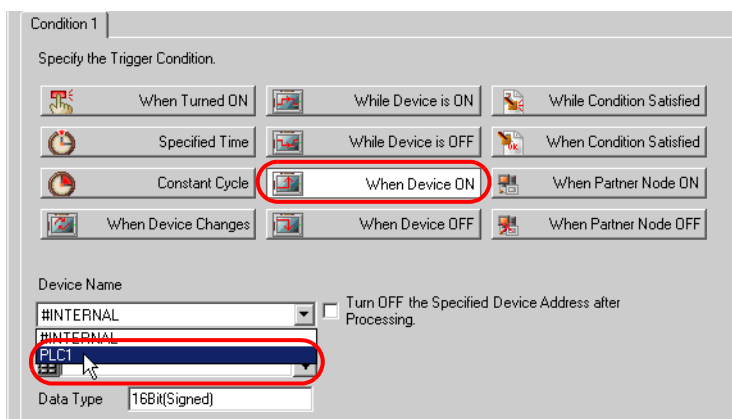
- 3 Enter the trigger condition name "TurnOnWriteStartBit" in [Trigger Condition Name], and select "AGP1" in [Node Name] which has the device to serve as the trigger condition.

**NOTE**

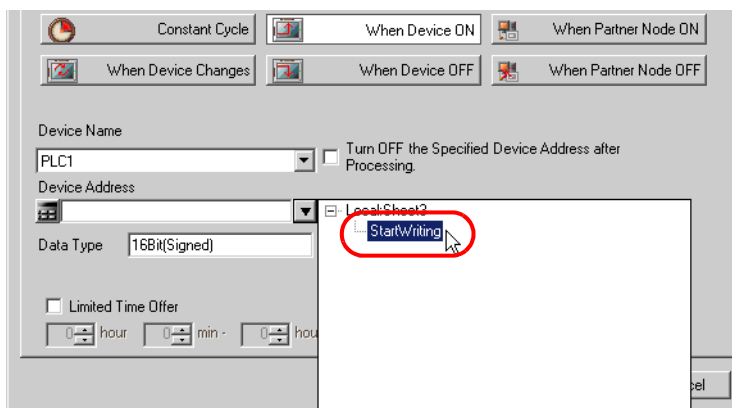
- Here, you are to specify the node having the device to be the trigger condition.

☞ "33 Trigger Conditions"

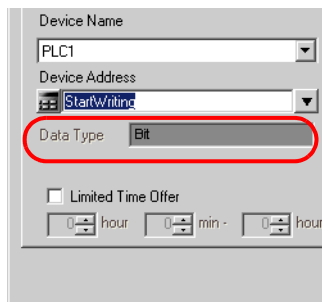
- 4 Click the [When Device ON] button in the [Condition 1] tab and select "PLC1" for the device name.



- 5 Click the [Device Address] list button and select "StartWriting" for the symbol name of the device which serves as the trigger condition.



[Data Type] automatically appears after selection, too.



NOTE

- You can also set trigger conditions by combining 2 different types of conditions ("And" condition or "Or" condition).

☞ "33 Trigger Conditions"

6 Click the [OK] button.

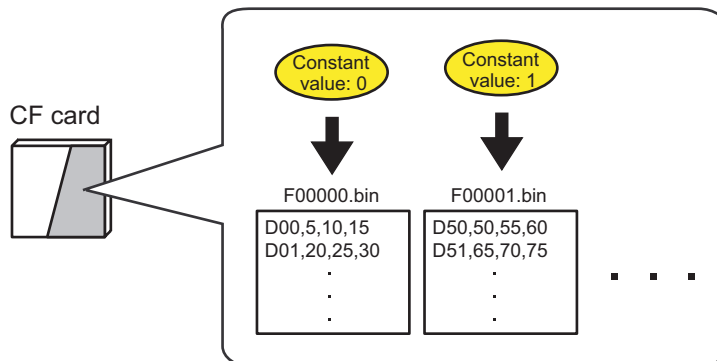
This is the end of trigger condition settings.

18.1.6 Setting Data Received by ACTION

This step sets data to transfer in ACTION.

NOTE

- If a data write destination is of a CF card or FEPROM, the transfer data set here is to be the file No. of the CF card or FEPROM. The file number refers to the numerical value of ***** of "F*****.bin".

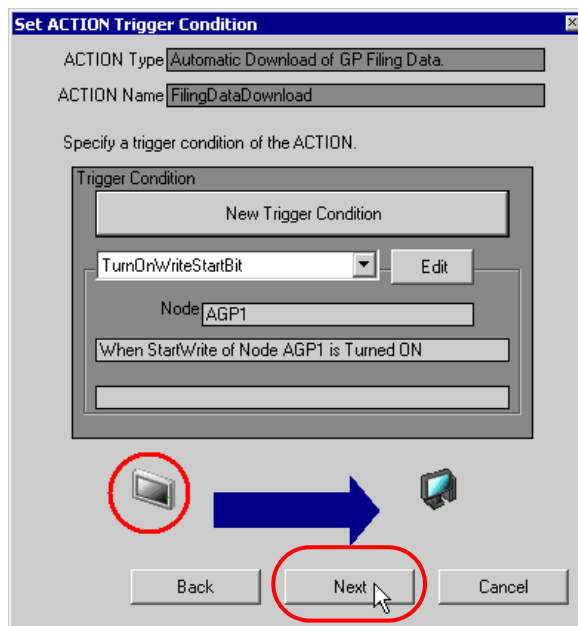


If you write into the backup SRAM, you can use any value for transfer data.

Ex.

- Constant value to transfer: 1

1 On the "Set ACTION Trigger Condition" screen, click the [Next] button.



- 2 After clicking [Constant Value], enter "1" in the text box for the constant value to transfer and "1" in [No.].

Data settings to be received by ACTION

ACTION Type: Automatic Download of GP Filing Data

ACTION Name: FilingDataDownload

From the trigger node, this ACTION

File No.

is received as a data to do the ACTION. As the data value, the device value of the trigger node or a constant is available. Specify the data.

Transfer Source

Node: AGP1

Device Name: #INTERNAL

☐ Device Address

☒ Constant Value

1

Data Type: 16Bit(Signed) No. 1

Back Next Cancel

NOTE • You can transfer stored values as data by specifying a symbol or a device address.

This is the end of the setting of data received by ACTION.

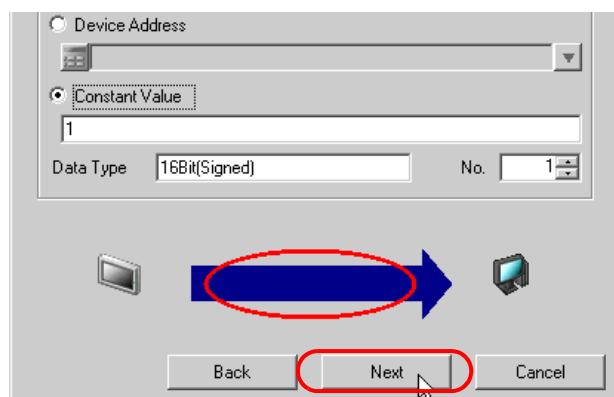
18.1.7 Setting ACTION Node/Process Completion Notification

This step sets the name of an ACTION node and the alert setting whether it should be tuned on or off when the ACTION is completed.

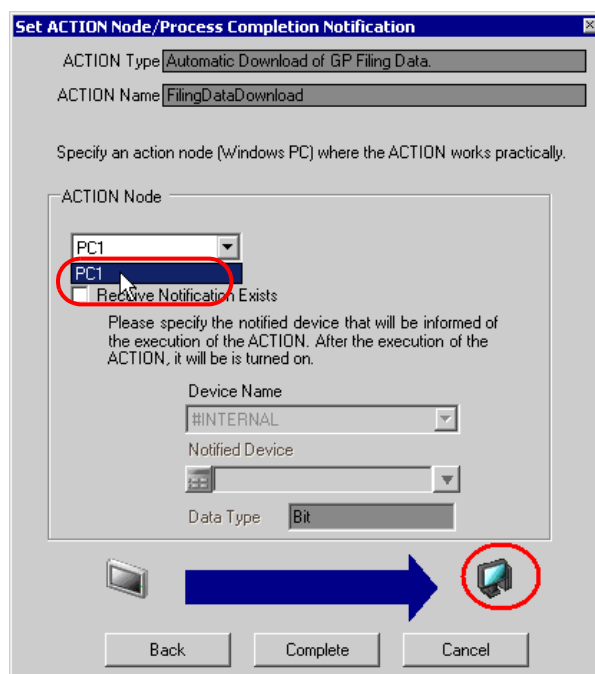
Ex.

- ACTION Node : PC1
- Receive Notification: OFF

1 On the "Data settings to be received by ACTION" screen, click the [Next] button.



2 Click the list button of [ACTION Node] and select "PC1" as a node where ACTION operates. Also, clear the check if [Receive Notification Exists] has been checked.



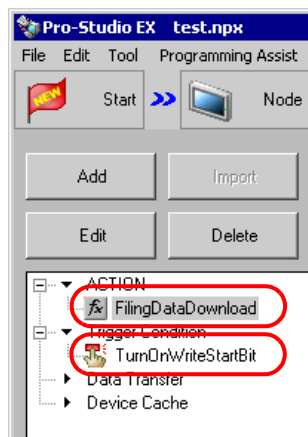
NOTE

- When "Receive Notification Exists" is turned on, the specified bit device will be turned on when the ACTION is completed. This can be used as the trigger condition of the subsequent ACTION when you want to execute two or more ACTIONS sequentially.

☞ "33 Trigger Conditions"

3 Click the [Complete] button.

The "Set ACTION Node/Process Completion Notification" screen will disappear. On the left of the screen, the ACTION and trigger condition name you set will appear.

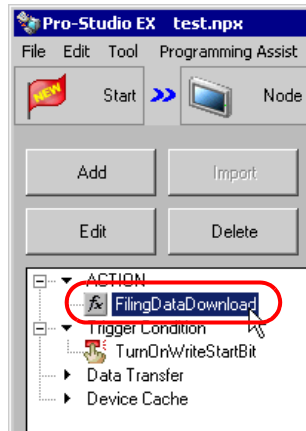


This is the end of the settings of the ACTION node and process completion notification.

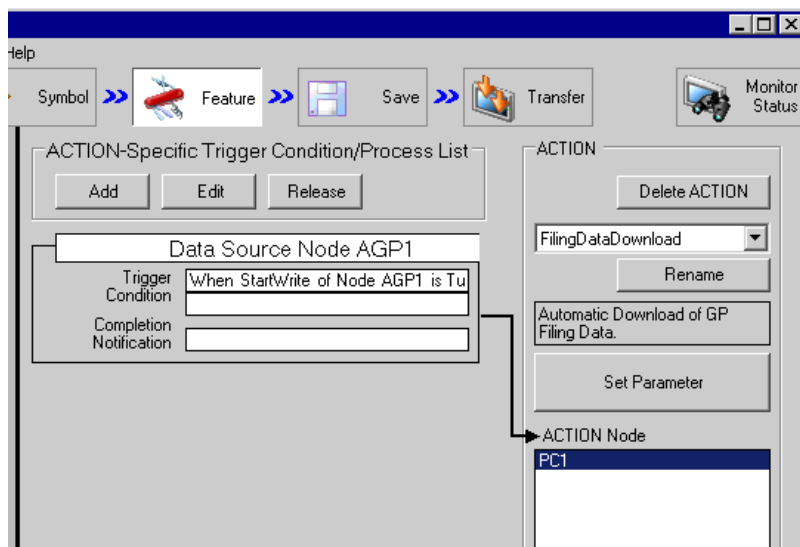
18.1.8 Verifying Setting Result

This step verifies setting results on the setting content list screen.

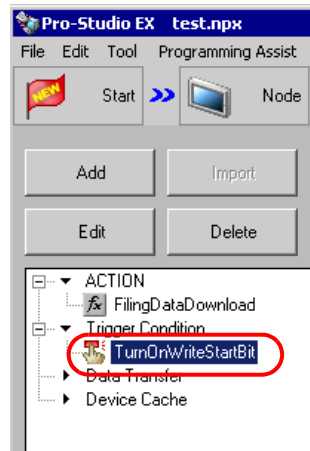
- 1 Select the ACTION name "FilingDataDownload" from the tree display on the left of the screen.



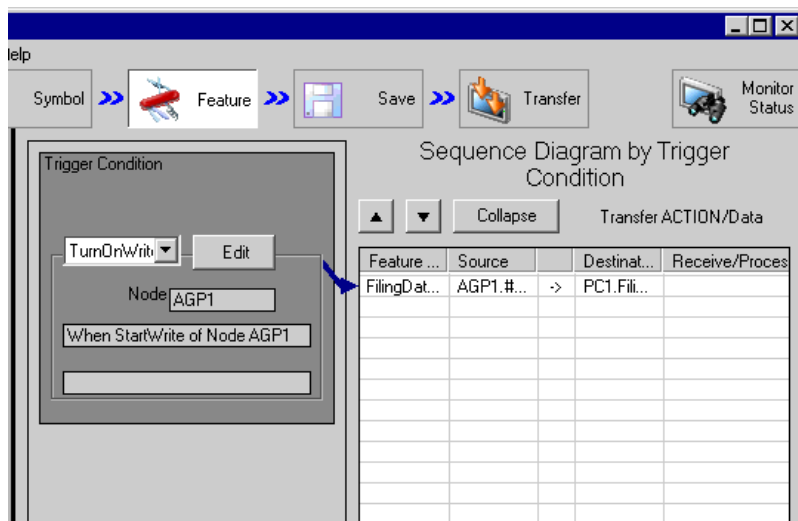
Confirm that the setting content appears on the right of the screen.



- 2 Select the trigger condition name "TurnOnWriteStartBit" from the tree display on the left of the screen.



Confirm that the setting content appears on the right of the screen.



This is the end of the verification of the settings.

18.1.9 Saving a Network Project File

This step saves the current settings as a network project file and reloads to 'Pro-Server EX'.

Refer to "25 Saving" for details about saving a network project file.

IMPORTANT

- 'Pro-Server EX' reads a created network project file, and then executes ACTION according to the settings in the file. The settings therefore need be saved in the network project file.
- Be sure to reload the network project file to 'Pro-Server EX'. If not, ACTION will not work.

Ex.

- Path of network project file : Desktop\FilingData_download.npx
- Title : Filing data download action

18.1.10 Transferring a Network Project File

This step transfers a saved network project file to entry nodes.

Refer to "26 Transferring" for details about transferring a network project file.

NOTE

- Be sure to transfer a network project file. If not, ACTION will not work.

18.1.11 Executing ACTION

This step activates ACTION to write filing data into File Folder in a CF card of GP when the preset trigger condition has become effective.

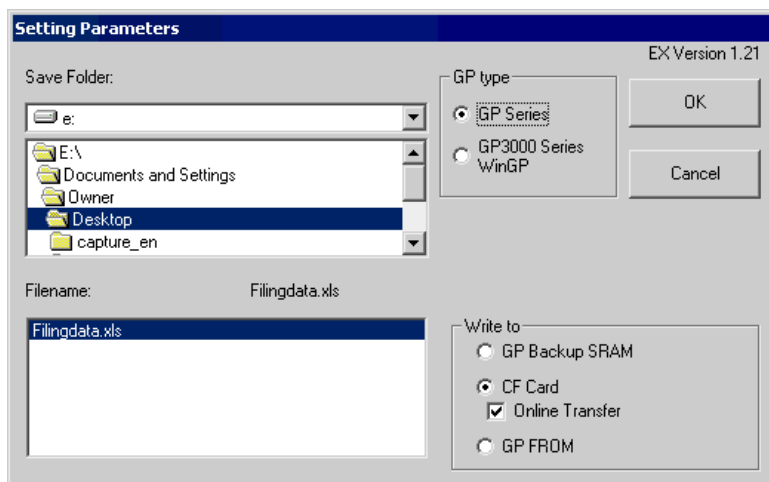
This is the end of the explanation of this ACTION.

NOTE

- If you want to achieve faster communication during ACTION, refer to "29 Tips for Faster Communication".

18.2 Setting Guide

This section explains how to set the parameters of ACTION.



Setting item	Setting content
Save Folder	Selects the folder where filing data to download will be stored. C drive (C:) folder is to appear for initial setting. To change the drive to display, click the list button to select new one.
File name	Sets the file name of filing data to download.
GP type	Selects the series name of the GP for writing filing data. <ul style="list-style-type: none"> GP Series Selects if the reading source is of GP2000 Series or GLC Series. <ul style="list-style-type: none"> GP3000 Series/WinGP Selects if the reading source is of GP3000 Series or WinGP.
Write to	Selects where to write filing data. <div style="border: 1px solid black; padding: 2px; margin: 5px 0;">NOTE</div> <ul style="list-style-type: none"> If the write destination is of GP3000 Series or WinGP, you cannot select [GP Backup SRAM] or [GP FROM]. If the write destination is of GP Series and you select [CF Card], you can write filing data into a CF card online with [Online Transfer] checked. If the write destination is of GP3000 Series or WinGP, [Online Transfer] is checked automatically.

18.3 Restrictions

■ Restrictions for GP Series

- GP turns into the transfer screen once when writing to internal memory (FEPROM) and CF cards. Other communications stop during transfer. Resume operation when the screen returns to initial one after completing transfer.

However, you can select online transfer in writing to CF cards.

- You cannot download each sheet of an uploaded Excel file after saving in a CSV file.
- You cannot put together uploaded CSV files in an Excel file when downloading.

■ Restrictions on GP3000 Series

- You cannot download the filing data in GP3200 Series because GP3200 Series does not have a CF card slot.

■ Restrictions on LT3000

- You cannot download the filing data in LT3000 because LT3000 does not have a CF card slot.

