



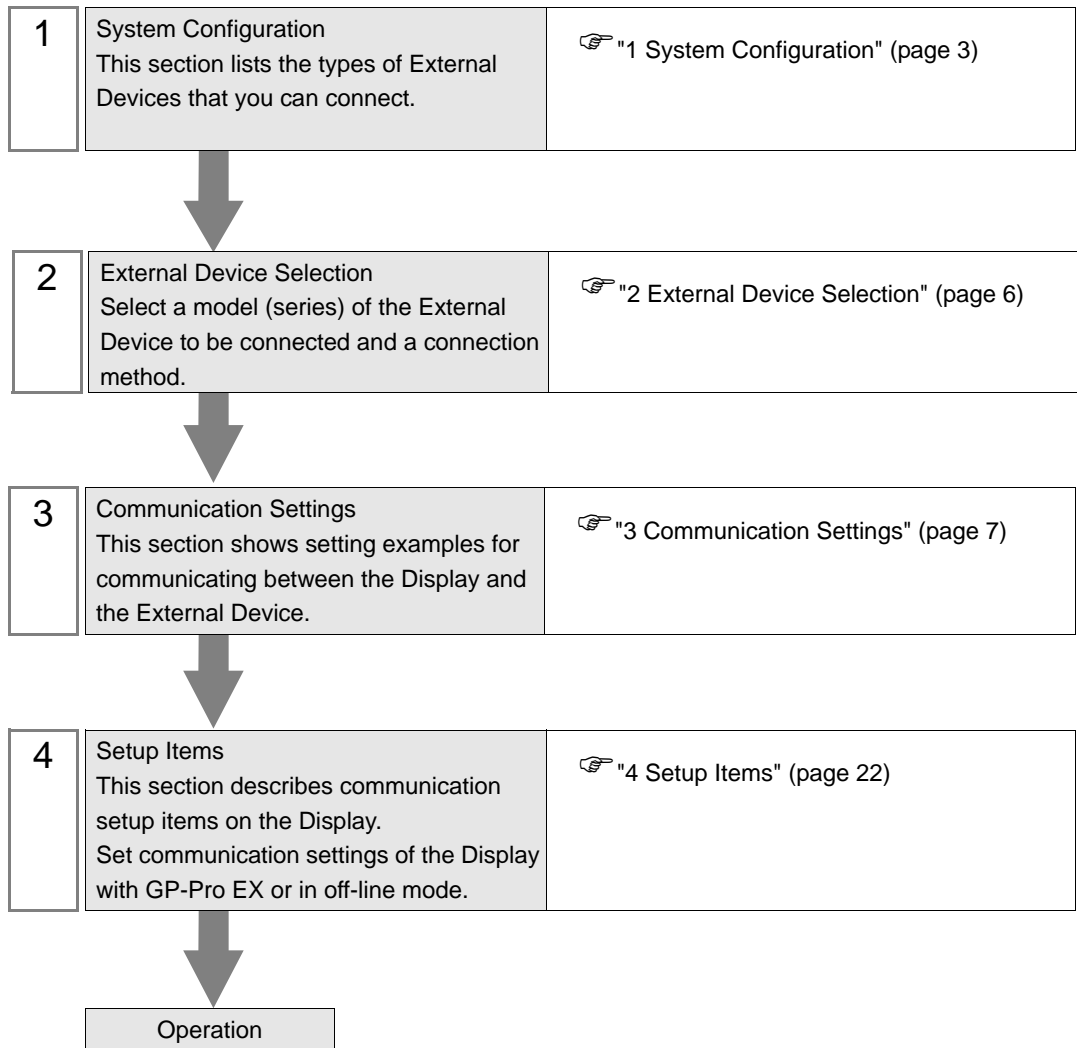
EtherNet/IP Driver

1	System Configuration.....	3
2	External Device Selection	6
3	Communication Settings	7
4	Setup Items	22
5	Supported Devices.....	26
6	Device Code and Address Code.....	50
7	Error Messages.....	51

Introduction

This manual describes how to connect the Display and the External Device (target PLC).

In this manual, the connection procedure is described in the sections identified below:



1 System Configuration

The following table lists system configurations for connecting Rockwell Automation, Inc. External Devices and the Display.

Series Name	CPU	Link I/F	Communication I/F	Setting Example
SLC500	SLC 5/05	CPU Direct (channel1) ^{*1}	Ethernet (TCP)	Setting Example 1 (page 7)
	SLC 5/03 SLC 5/04 SLC 5/05	1761-NET-ENI		Setting Example 2 (page 9)
PLC-5	All CPUs that support the link I/F on the right	1761-NET-ENI		Setting Example 3 (page 10)
ControlLogix	All CPUs that support the link I/F on the right	1756-ENET/B 1756-ENET 1756-ENBT		Setting Example 4 (page 11)
		1761-NET-ENI		Setting Example 5 (page 12)
ControlLogix Native ^{*2}	All CPUs that support the link I/F on the right	1756-ENET/B 1756-ENET 1756-ENBT		Setting Example 9 (page 16)
		1761-NET-ENI ^{*3}		Setting Example 10 (page 18)
MicroLogix	MicroLogix 1000 MicroLogix 1100 MicroLogix 1200 MicroLogix 1500	1761-NET-ENI		Setting Example 6 (page 13)
	MicroLogix 1100	CPU Direct (channel1)		Setting Example 7 (page 14)
CompactLogix	All CPUs that support the link I/F on the right	1761-NET-ENI		Setting Example 5 (page 12)
	1769-L32E 1769-L35E	CPU Direct		Setting Example 8 (page 15)
CompactLogix Native ^{*2}	All CPUs that support the link I/F on the right	1761-NET-ENI ^{*3}		Setting Example 10 (page 18)
	1769-L32E 1769-L35E	CPU Direct		Setting Example 11 (page 20)
FlexLogix Native ^{*2}	All CPUs that support the link I/F on the right	1788-ENBT/A		Setting Example 9 (page 16)

- *1 Rockwell EtherNet/IP driver for GP uses the CIP protocol. Old revision of SLC 5/05 CPU does not support it. Upgrade CPU Series A to the firmware revision of OS501, FRN5 or later. CPU Series B and C support the CIP protocol.
- *2 Select Control/Compact/Flex Logix Native when using Native tag names on External Devices.
- *3 To use the 1761-NET-ENI with the "Control/Compact/Flex Logix Series Native", the module must be Series B or later.

IMPORTANT

- Projects created with the Ethernet/IP Driver Version 1.12.06 or later can be used with applications (GP-Pro EX and Pro-Server EX) that have a driver of that version or greater installed.
A project cannot be used if the driver installed is a lower version than that used in the project.

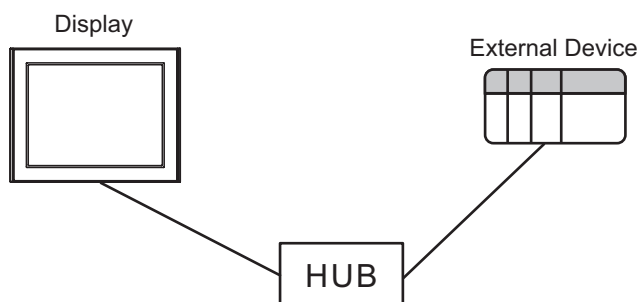
- If the driver version is older than V1.12.06, download the latest driver from the support site, "Otasuke Pro!"

Digital Electronics Corporation Service & Support "Otasuke Pro!"

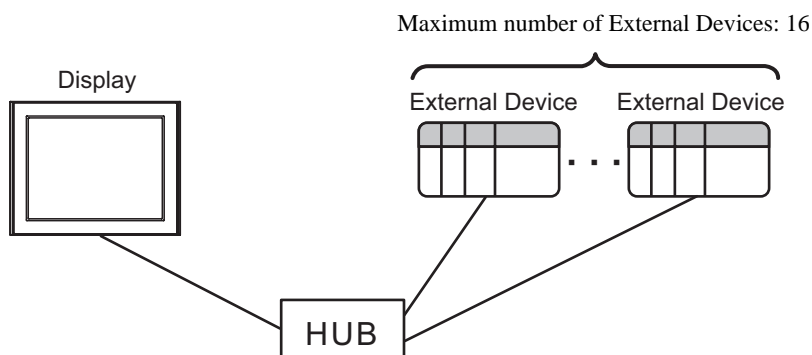
<http://www.pro-face.com/otasuke/>

■ Connection Configuration

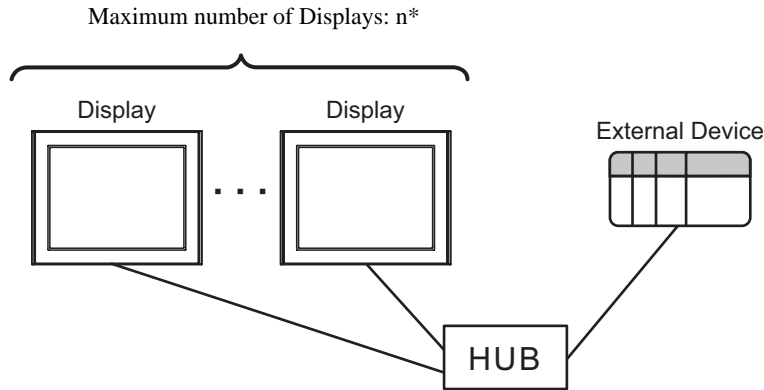
- 1:1 Connection



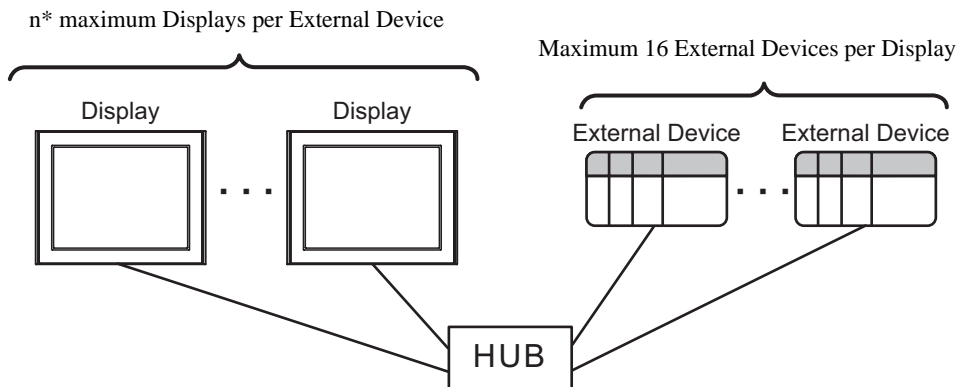
- 1:n Connection



- n:1 Connection



- n:m Connection



* The maximum number of sustainable units differs depending on the series and the link I/F. Refer to the table below for the maximum number of sustainable units for each series and link I/F.

Series Name	Link I/F	The max number of Display
SLC500	CPU Direct	8
	1761-NET-ENI	4
PLC-5	1761-NET-ENI	4
ControlLogix CompactLogix	Ethernet module	12
	1761-NET-ENI	4
FlexLogix	Ethernet module	12
MicroLogix	CPU Direct	16
	1761-NET-ENI	4

2 External Device Selection

Select the External Device to be connected to the Display.

Setup Items	Setup Description
Maker	Select the maker of the External Device to be connected. Select "Rockwell Automation, Inc.".
Driver	Select a model (series) of the External Device to be connected and connection method. Select "EtherNet/IP". Check the External Device which can be connected in "EtherNet/IP" in the System Configuration section. "1 System Configuration" (page 3)
Use System Area	Check this option to synchronize the system data area of the Display and the device (memory) of the External Device. When they are synchronized, you can use the ladder program of the External Device to switch the display or display the window on the Display. Cf. GP-Pro EX Reference Manual "Appendix 1.4 LS Area (Direct Access Method)" This can be also set with GP-Pro EX or in the Display's off-line mode. Cf. GP-Pro EX Reference Manual "5.17.6 [System Settings] Setting Guide, [Display Unit] Settings Guide, System Area Settings" Cf. Maintenance/Troubleshooting Manual "2.15.1 Settings common to all Display models, [Main Unit Settings] Settings Guide, System Area Settings"
Port	Select the Display port to be connected to the External Device.

3 Communication Settings

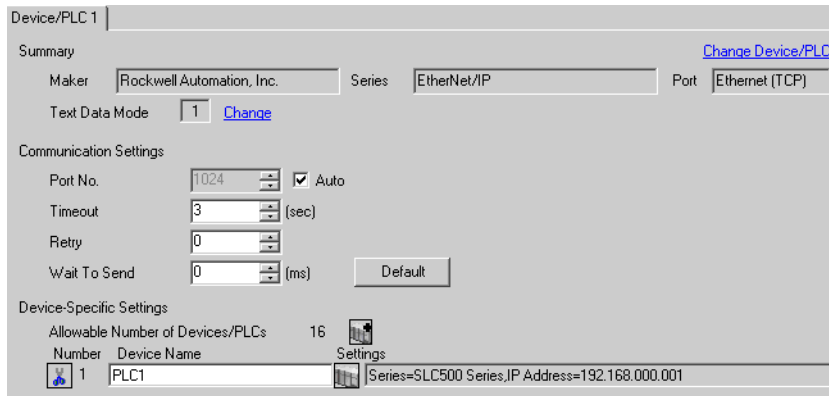
This section provides examples of communication settings recommended by Pro-face for the Display and the External Device.

3.1 Setting Example 1

■ GP-Pro EX Settings

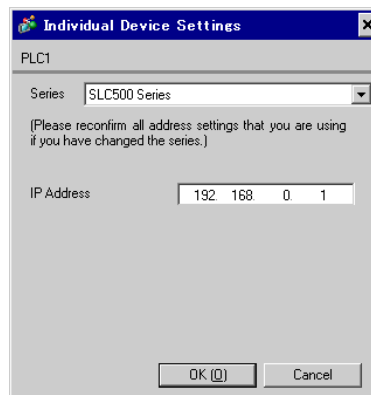
◆ Communication Settings

To display the setting screen, from the [System Settings] workspace, select [Device/PLC].



◆ Device Setting

To display the setting screen, from [Device/PLC] and [Device-Specific Settings], click  ([Settings]).



■ External Device Settings

Use RSLogix500 for communication setting.

Please refer to the manual of RSLogix500 for more details.

1. Start up RSLogix500 and create a new project. Select the CPU to be used when creating a new project.
2. Select [Channel Configuration] from [Controller] in the displayed Project tree.
3. Select [Open] from the menu displayed by right-clicking [Channel Configuration] and display the Channel setting screen.
4. Use the [Chan.1 - System] tab to set IP address and other items.
5. Download the setting in the External Device and restart the External Device.

◆ Notes

- Check with a network administrator about IP address. Do not set the duplicate IP address.
- Set IP address on the External Device for IP address in Device-specific settings.
- You need to set IP address on the Display in the off-line mode of the display.

3.2 Setting Example 2

■ GP-Pro EX Settings

◆ Communication Settings

To display the setting screen, from the [System Settings] workspace, select [Device/PLC].

NOTE • When using 1761-NET-ENI, you need to set the timeout to 6 seconds or more.

◆ Device Setting

To display the setting screen, from [Device/PLC] and [Device-Specific Settings], click  ([Settings]).

■ External Device Settings

Use the ENI/ENIW Utility for communication setting.

Please refer to the ENI/ENIW Utility manual for more details.

1. Start up the ENI/ENIW Utility.
2. Use the [ENI IP Addr] tab to set IP address and other items.
3. Download the settings in 1761-NET-ENI and restart the External Device.

◆ Notes

- Check with a network administrator about IP address. Do not set the duplicate IP address.
- Set IP address on the External Device for IP address in Device-specific settings.
- You need to set IP address on the Display in the off-line mode of the display.

3.3 Setting Example 3


■ GP-Pro EX Settings

◆ Communication Settings

To display the setting screen, from the [System Settings] workspace, select [Device/PLC].

NOTE • When using 1761-NET-ENI, you need to set the timeout to 6 seconds or more.

◆ Device Setting

To display the setting screen, from [Device/PLC] and [Device-Specific Settings], click  ([Settings]).

■ External Device Settings

Use the ENI/ENIW Utility for communication setting.

Please refer to the ENI/ENIW Utility manual for more details.

1. Start up the ENI/ENIW Utility.
2. Use the [ENI IP Addr] tab to set IP address and other items.
3. Download the settings in 1761-NET-ENI and restart the External Device.

◆ Notes

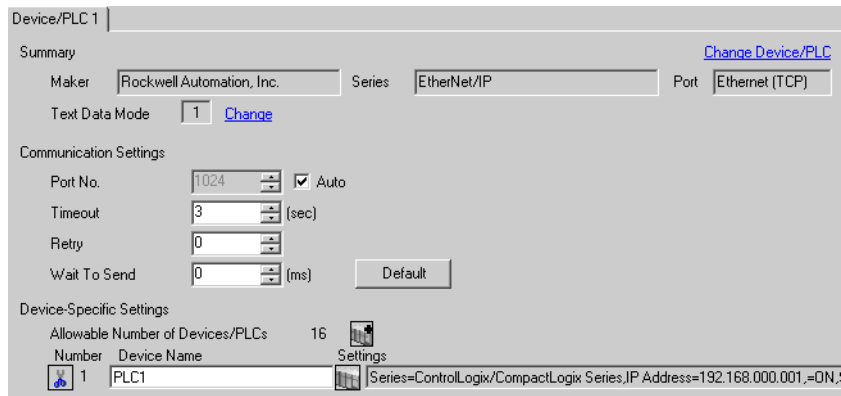
- Check with a network administrator about IP address. Do not set the duplicate IP address.
- Set IP address on the External Device for IP address in Device-specific settings.
- You need to set IP address on the Display in the off-line mode of the display.

3.4 Setting Example 4


■ GP-Pro EX Settings

◆ Communication Settings

To display the setting screen, from the [System Settings] workspace, select [Device/PLC].



◆ Device Setting

To display the setting screen, from [Device/PLC] and [Device-Specific Settings], click  ([Settings]).



■ External Device Settings

Use RSLogix5000 for communication setting.

Please refer to the manual of RSLogix5000 for more details.

1. Select [New Module] from the menu displayed by right-clicking [I/O Configuration] in the Project tree of RSLogix5000.
2. Select a module in the [Select Module] dialog box and click [OK].
3. Select [Properties] from the menu displayed by right-clicking the module added in the Project tree.
4. Use the [General] tab to set IP address and other items.
5. Download the setting in the External Device and restart the External Device.

◆ Notes

- Check with a network administrator about IP address. Do not set the duplicate IP address.
- Set IP address on the External Device for IP address in Device-specific settings.
- You need to set IP address on the Display in the off-line mode of the display.

3.5 Setting Example 5


■ GP-Pro EX Settings

◆ Communication Settings

To display the setting screen, from the [System Settings] workspace, select [Device/PLC].

NOTE • When using 1761-NET-ENI, you need to set the timeout to 6 seconds or more.

◆ Device Setting

To display the setting screen, from [Device/PLC] and [Device-Specific Settings], click  ([Settings]).

■ External Device Settings

Use the ENI/ENIW Utility for communication setting.

Please refer to the ENI/ENIW Utility manual for more details.

1. Start up the ENI/ENIW Utility.
2. Use the [ENI IP Addr] tab to set IP address and other items.
3. Download the settings in 1761-NET-ENI and restart the External Device.

◆ Notes

- Check with a network administrator about IP address. Do not set the duplicate IP address.
- Set IP address on the External Device for IP address in Device-specific settings.
- You need to set IP address on the Display in the off-line mode of the display.

3.6 Setting Example 6


■ GP-Pro EX Settings

◆ Communication Settings

To display the setting screen, from the [System Settings] workspace, select [Device/PLC].

NOTE • When using 1761-NET-ENI, you need to set the timeout to 6 seconds or more.

◆ Device Setting

To display the setting screen, from [Device/PLC] and [Device-Specific Settings], click  ([Settings]).

■ External Device Settings

Use the ENI/ENIW Utility for communication setting.

Please refer to the ENI/ENIW Utility manual for more details.

1. Start up the ENI/ENIW Utility.
2. Use the [ENI IP Addr] tab to set IP address and other items.
3. Download the settings in 1761-NET-ENI and restart the External Device.

◆ Notes

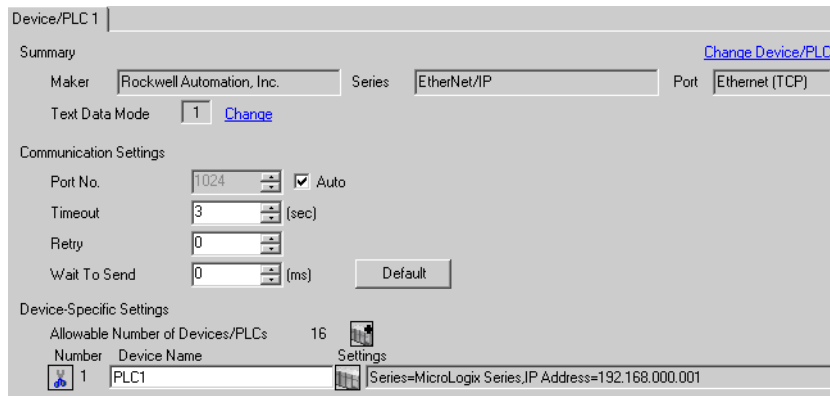
- Check with a network administrator about IP address. Do not set the duplicate IP address.
- Set IP address on the External Device for IP address in Device-specific settings.
- You need to set IP address on the Display in the off-line mode of the display.

3.7 Setting Example 7

■ GP-Pro EX Settings

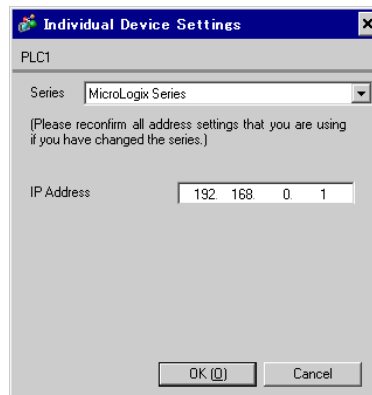
◆ Communication Settings

To display the setting screen, from the [System Settings] workspace, select [Device/PLC].



◆ Device Setting

To display the setting screen, from [Device/PLC] and [Device-Specific Settings], click  ([Settings]).



■ External Device Settings

Use RSLogix500 for communication setting.

Please refer to the manual of RSLogix500 for more details.

1. Start up RSLogix500 and create a new project. Select the CPU to be used when creating a new project.
2. Select [Channel Configuration] from [Controller] in the displayed Project tree.
3. Select [Open] from the menu displayed by right-clicking [Channel Configuration] and display the Channel setting screen.
4. Use the [Chan.1 - System] tab to set IP address and other items.
5. Download the setting in the External Device and restart the External Device.

◆ Notes

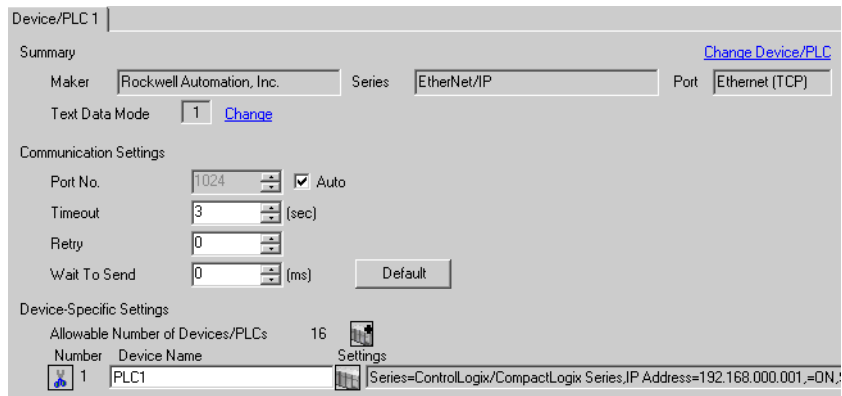
- Check with a network administrator about IP address. Do not set the duplicate IP address.
- Set IP address on the External Device for IP address in Device-specific settings.
- You need to set IP address on the Display in the off-line mode of the display.

3.8 Setting Example 8


■ GP-Pro EX Settings

◆ Communication Settings

To display the setting screen, from the [System Settings] workspace, select [Device/PLC].



◆ Device Setting

To display the setting screen, from [Device/PLC] and [Device-Specific Settings], click  ([Settings]).



■ External Device Settings

Use RSLogix5000 for communication setting.

Please refer to the manual of RSLogix5000 for more details.

1. Use RSLogix5000 to create the new project. Select the CPU to be used when creating the new project.
2. Select the Ethernet port from [I/O Configuration] in the Project tree.
3. Select [Properties] from the menu displayed by right-clicking the Ethernet port.
4. Use the [General] tab to set IP address and other items.
5. Download the setting in the External Device and restart the External Device.

◆ Notes

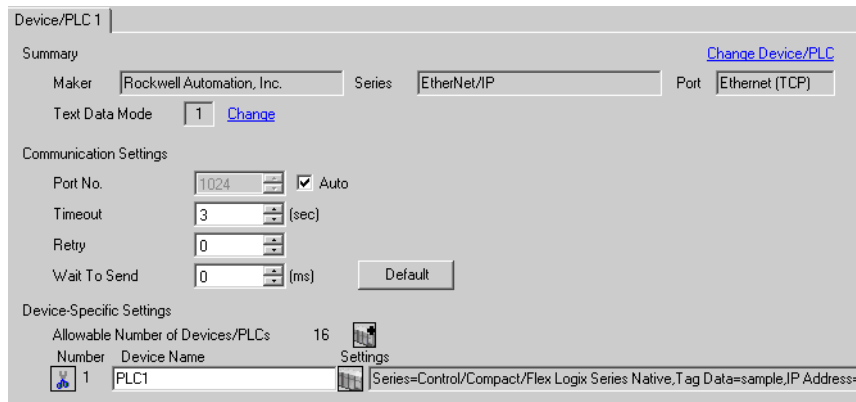
- Check with a network administrator about IP address. Do not set the duplicate IP address.
- Set IP address on the External Device for IP address in Device-specific settings.
- You need to set IP address on the Display in the off-line mode of the display.

3.9 Setting Example 9


■ GP-Pro EX Settings

◆ Communication Settings

To display the setting screen, from the [System Settings] workspace, select [Device/PLC].



◆ Device Setting

To display the setting screen, from [Device/PLC] and [Device-Specific Settings], click  ([Settings]).




■ External Device Settings

Use RSLogix5000 for communication setting.

Please refer to the manual of RSLogix5000 for more details.

1. Select [New Module] from the menu displayed by right-clicking [I/O Configuration] in the Project tree of RSLogix5000.
2. Select a Link Interface module in the [Select Module] dialog box and click [OK].
3. Select [Properties] from the menu displayed by right-clicking the module added in the Project tree.
4. Use the [General] tab to set IP address and other items.
5. Download the setting in the External Device and restart the External Device.

◆ Notes

- When selecting "Control/Compact/Flex Logix Series Native", you need to create a Tag Data Block.
 "5.5 Control/Compact/Flex Logix Series Native" (page 34)
- Check with a network administrator about IP address. Do not set the duplicate IP address.
- Set IP address on the External Device for IP address in Device-specific settings.
- You need to set IP address on the Display in the off-line mode of the display.

3.10 Setting Example 10


■ GP-Pro EX Settings

◆ Communication Settings

To display the setting screen, from the [System Settings] workspace, select [Device/PLC].

NOTE • When using 1761-NET-ENI, you need to set the timeout to 6 seconds or more.

◆ Device Setting

To display the setting screen, from [Device/PLC] and [Device-Specific Settings], click  ([Settings]).

■ External Device Settings

Use the ENI/ENIW Utility for communication setting.

Please refer to the ENI/ENIW Utility manual for more details.

1. Start up the ENI/ENIW Utility.
2. Use the [ENI IP Addr] tab to set IP address and other items.
3. Download the settings in 1761-NET-ENI and restart the External Device.

◆ Notes

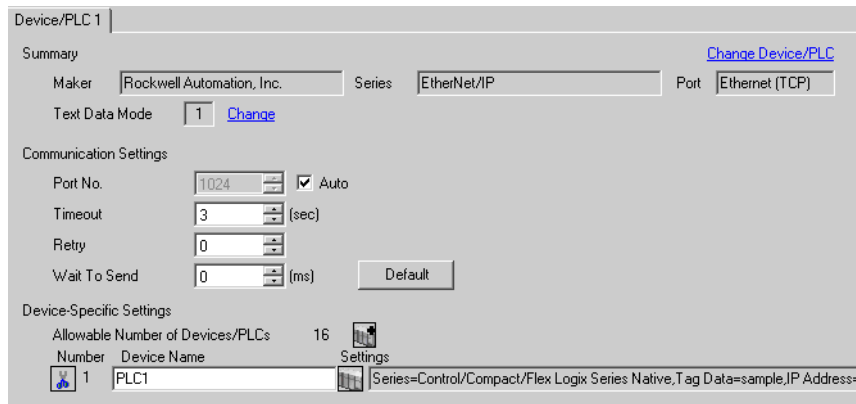
- When selecting "Control/Compact/Flex Logix Series Native", you need to create a Tag Data Block.
 - ☞ "5.5 Control/Compact/Flex Logix Series Native" (page 34)
- Check with a network administrator about IP address. Do not set the duplicate IP address.
- Set IP address on the External Device for IP address in Device-specific settings.
- You need to set IP address on the Display in the off-line mode of the display.

3.11 Setting Example 11


■ GP-Pro EX Settings

◆ Communication Settings

To display the setting screen, from the [System Settings] workspace, select [Device/PLC].



◆ Device Setting

To display the setting screen, from [Device/PLC] and [Device-Specific Settings], click  ([Settings]).




■ External Device Settings

Use RSLogix5000 for communication setting.

Please refer to the manual of RSLogix5000 for more details.

1. Use RSLogix5000 to create the new project. Select the CPU to be used when creating the new project.
2. Select the Ethernet port from [I/O Configuration] in the Project tree.
3. Select [Properties] from the menu displayed by right-clicking the Ethernet port.
4. Use the [General] tab to set IP address and other items.
5. Download the setting to the External Device and restart the External Device.

◆ Notes

- When selecting "Control/Compact/Flex Logix Series Native", you need to create a Tag Data Block.
 "5.5 Control/Compact/Flex Logix Series Native" (page 34)
- Check with a network administrator about IP address. Do not set the duplicate IP address.
- Set IP address on the External Device for IP address in Device-specific settings.
- You need to set IP address on the Display in the off-line mode of the display.

4 Setup Items

Set up the Display's communication settings in GP-Pro EX or in the Display's off-line mode.

The setting of each parameter must match that of the External Device.

☞ "3 Communication Settings" (page 7)

NOTE • Set the Display's IP address in off-line mode.

Cf. Maintenance/Troubleshooting Manual "2.5 Ethernet Settings"

4.1 Setup Items in GP-Pro EX

■ Communication Settings

To display the setting screen, from the [System Settings] workspace, select [Device/PLC].

Device/PLC 1

Summary [Change Device/PLC](#)

Maker: Rockwell Automation, Inc. Series: EtherNet/IP Port: Ethernet (TCP)

Text Data Mode: 1 [Change](#)

Communication Settings

Port No.: 1024 Auto

Timeout: 3 (sec)

Retry: 0

Wait To Send: 0 (ms) [Default](#)


Device-Specific Settings


Allowable Number of Devices/PLCs: 16

Number	Device Name	Settings
1	PLC1	Series=Control/Compact/Flex Logix Series Native, Tag Data=sample, IP Address=


Setup Items	Setup Description
Port No.	Use an integer from 1024 to 65535 to enter the port number of the Display. When you check the option of [Auto Assign], the port number will be automatically set.
Timeout	Use an integer from 1 to 127 to enter the time (s) for which the Display waits for the response from the External Device.
Retry	If there is no response from the External Device, use an integer from 0 to 255 to enter how many times the Display retransmits the command.
Wait To Send	Use an integer from 0 to 255 to enter the amount of standby time (ms) the Display counts from the time it receives a packet to the time it transmits the next packet.

■ Device Setting

To display the setting screen, from [Device/PLC] and [Device-Specific Settings], click  ([Settings]).

When connecting multiple External Devices, from [Device/PLC] and [Device-Specific Settings], click  ([Settings]) to add available External Devices.



Setup Items	Setup Description
Series	Select a model of the External Device.
IP Address	Set IP address of the External Device. <div style="border: 1px solid black; padding: 2px; display: inline-block;">NOTE</div> <ul style="list-style-type: none"> • Check with a network administrator about IP address. Do not set the duplicate IP address.
Slot No.	When connecting to Control/Compact/Flex Logix, use "0 to 20" to select the slot number where the CPU unit is installed. Communication is not available if this option is unchecked.
Tag Data	Select Tag Data Block to define the Tag in the External Device when selecting "Control/Compact/Flex Logix Series Native" for [Series]. Click [New] to make new Tag Data Block.  "5.5 Control/Compact/Flex Logix Series Native" (page 34)

4.2 Off-Line Mode Settings

NOTE

- Refer to the Maintenance/Troubleshooting manual for information on how to enter off-line mode or about the operation.

Cf. Maintenance/Troubleshooting Manual "2.2 Off-line Mode"

■ Communication Settings

To display the setting screen, touch [Device/PLC Settings] from [Peripheral Equipment Settings] in the off-line mode. Touch the External Device you want to set from the displayed list.

Comm.	Device			
EtherNet/IP			[TCP]	Page 1/1
Port No.	<input type="radio"/> Fixed <input checked="" type="radio"/> Auto	<input type="text" value="1024"/> ▼ ▲		
Timeout(s)	<input type="text" value="3"/> ▼ ▲			
Retry	<input type="text" value="0"/> ▼ ▲			
Wait To Send(ms)	<input type="text" value="0"/> ▼ ▲			
Exit		Back		2007/07/23 11:13:29

Setup Items	Setup Description
Port No.	Set the Port No. of the Display. Select either [Fixed] or [Auto]. When you select [Fixed], use an integer from 1024 to 65535 to enter the port No. of the Display. When you select [Auto], the port No. will be automatically assigned regardless of the entered value.
Timeout	Use an integer from 1 to 127 to enter the time (s) for which the Display waits for the response from the External Device.
Retry	If there is no response from the External Device, use an integer from 0 to 255 to enter how many times the Display retransmits the command.
Wait To Send	Use an integer from 0 to 255 to enter the amount of standby time (ms) the Display counts from the time it receives a packet to the time it transmits the next packet.

■ Device Setting

To display the setting screen, from [Peripheral Equipment Settings] touch [Device/PLC Settings]. Touch the External Device you want to set from the displayed list, and touch [Device Settings].


Comm.	Device			
EtherNet/IP		[TCP]	Page 1/1	
Device/PLC Name		[PLC1]		
Series	ControlLogix Native			
IP Address	192	168	0	1
Slot Number	<input type="radio"/> Disable <input checked="" type="radio"/> Enable		<input type="text" value="0"/> <input type="button" value="▼"/> <input type="button" value="▲"/>	
TagData	sample			
Exit		Back		2007/07/23 11:13:34

Setup Items	Setup Description
Device name	Select the device name for device setting. Device name is a title of the External Device set with GP-Pro EX.(Initial value [PLC1])
Series	Displays the External Device model.
IP Address	Set IP address of the External Device. <div style="border: 1px solid black; padding: 2px; display: inline-block; margin-bottom: 5px;">NOTE</div> <ul style="list-style-type: none"> Check with a network administrator about IP address. Do not set the duplicate IP address.
Slot Number	When connecting to Control/Compact/Flex Logix, use "0 to 20" to select the slot number where the CPU unit is installed. Communication is not available when setting [Disable].
TagData	Displays TagData which is set to define the Tag in the External Device. When any other option than "Control/Compact/Flex Logix Series Native" is selected in [Series], TagData name will not be displayed.

5 Supported Devices

The following table shows the range of supported device addresses.

5.1 SLC500 Series

 This address can be specified as system data area.

Device		Bit Address		Word Address		32 bit	Remarks
Input File		I:00.000/00-I:63.255/15		I:00.000-I63.255			
Output File		O:00.000/00-O:63.255/15		O:00.000-O:63.255			
Status File		S:000/00-S:163/15		S:000-S:163			
Bit File		B003:000/00-B003:255/15 B009:000/00-B255:255/15		B003:000-B003:255 B009:000-B255:255			
Timer File	Enable	T004:000/-T004:255/ T009:000/-T255:255/	EN	T004:000.-T004:255. T009:000.-T255:255.	-	[L/H]	
	Timing		TT		-		
	Done		DN		-		
	Preset		-		PRE		
	Accumulated		-		ACC		
Counter File	Up Enable	C005:000/-C005:255/ C009:000/-C255:255/	CU	C005:000.-C005:255. C009:000.-C255:255.	-	[L/H]	
	Down Enable		CD		-		
	Done		DN		-		
	Overflow		OV		-		
	Underflow		UN		-		
	Update Acc.		UA		-		
	Preset		-		PRE		
	Accumulated		-		ACC		

continued on next page

Device		Bit Address		Word Address		32 bit	Remarks
Control File	Enable	R006:000/-R006:255/ R009:000/-R255:255/	EN	R006:000.-R006:255. R009:000.-R255:255.	-	[L/H]	
	Enable Unload		EU		-		
	Done		DN		-		
	Empty		EM		-		
	Error		ER		-		
	Unload		UL		-		
	Inhibit Comp.		IN		-		
	Found		FD		-		
	Length		-		LEN		
	Position		-		POS		
Integer File		-	N007:000-N007:255 N009:000-N255:255			[Bit 15]	
Floating Point File		-	F008:000-F008:255 F009:000-F255:255		-	32 Bit Access Only	
String File		-	ST009:000-ST255:255			*1	
ASCII File		-	A009:000-A255:255		[L/H]	[Bit 15]	

*1 String File device is not compatible with the device monitor.

NOTE

- Please refer to the GP-Pro EX Reference Manual for system data area.

Cf. GP-Pro EX Reference Manual "Appendix 1.4 LS Area (Direct Access Method)"

- Please refer to the precautions on manual notation for icons in the table.

☞ "Manual Symbols and Terminology"

5.2 PLC-5 Series

 This address can be specified as system data area.

Device		Bit Address		Word Address		32 bit	Remarks
Input File		I:000/00-I:377/17		I:000-I:377			
Output File		O:000/00-I:377/17		O:000-I:377			
Status File		S:000/00-S:163/15		S:000-S:163			
Bit File		B003:000/00-B999:999/15		B003:000-B999:999			
Timer File	Enable	T003:000/-T999:999/	EN	T003:000.-T999:999.	-	L / H	
	Timing		TT		-		
	Done		DN		-		
	Preset		-		PRE		
	Accumulated		-		ACC		
Counter File	Up Enable	C003:000/-C999:999/	CU	C003:000.-C999:999.	-	L / H	
	Down Enable		CD		-		
	Done		DN		-		
	Overflow		OV		-		
	Underflow		UN		-		
	Update Acc.		UA		-		
	Preset		-		PRE		
	Accumulated		-		ACC		

continued on next page

Device		Bit Address		Word Address		32 bit	Remarks
Control File	Enable	R003:000/-R999:999/	EN	R003:000.-R999:999.	-	[L/H]	
	Enable Unload		EU		-		
	Done		DN		-		
	Empty		EM		-		
	Error		ER		-		
	Unload		UL		-		
	Inhibit Comp.		IN		-		
	Found		FD		-		
	Length		-		LEN		
	Position		-		POS		
Integer File		-	N003:000-N999:999			[Bit 15]	
Floating Point File		-	F003:000-F999:999		-	32 Bit Access Only	
String File		-	ST003:000-ST999:999			*1	
ASCII File		-	A003:000-A999:999		[L/H]	[Bit 15]	
BCD File		-	D003:000-D999:999			[Bit 15]	

*1 String File device is not compatible with the device monitor.

NOTE


- Please refer to the GP-Pro EX Reference Manual for system data area.

Cf. GP-Pro EX Reference Manual "Appendix 1.4 LS Area (Direct Access Method)"

- Please refer to the precautions on manual notation for icons in the table.

 "Manual Symbols and Terminology"

5.3 MicroLogix Series

 This address can be specified as system data area.

Device		Bit Address		Word Address		32 bit	Remarks
Input File		I:00.000/00-I:08.255/15		I:00.000-I08.255			
Output File		O:00.000/00-O:08.255/15		O:00.000-O:08.255			
Status File		S:000/00-S:163/15		S:000-S:163			
Bit File		B003:000/00-B003:255/15 B009:000/00-B255:255/15		B003:000-B003:255 B009:000-B255:255			
Timer File	Enable	T004:000/-T004:255/ T009:000/-T255:255/	EN	T004:000.-T004:255. T009:000.-T255:255.	-	[L/H]	
	Timing		TT		-		
	Done		DN		-		
	Preset		-		PRE		
	Accumulated		-		ACC		
Counter File	Up Enable	C005:000/-C005:255/ C009:000/-C255:255/	CU	C005:000.-C005:255. C009:000.-C255:255.	-	[L/H]	
	Down Enable		CD		-		
	Done		DN		-		
	Overflow		OV		-		
	Underflow		UN		-		
	Update Acc.		UA		-		
	Preset		-		PRE		
	Accumulated		-		ACC		

continued on next page

Device		Bit Address		Word Address		32 bit	Remarks
Control File	Enable	R006:000/-R006:255/ R009:000/-R255:255/	EN	R006:000.-R006:255. R009:000.-R255:255.	-	[L/H]	
	Enable Unload		EU		-		
	Done		DN		-		
	Empty		EM		-		
	Error		ER		-		
	Unload		UL		-		
	Inhibit Comp.		IN		-		
	Found		FD		-		
	Length		-		LEN		
	Position		-		POS		
Integer File	-	N007:000-N007:255 N009:000-N255:255		-	[Bit 15]		
Floating Point File	-	F008:000-F008:255 F009:000-F255:255		-	32 Bit Access Only		
String File	-	ST009:000-ST255:255		[L/H]	*1		
Long Word File	-	L009:000-L255:255		-	[Bit 31]		

*1 String File device is not compatible with the device monitor.

NOTE

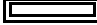
- Please refer to the GP-Pro EX Reference Manual for system data area.

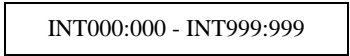

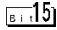
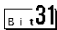

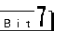
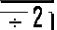
Cf. GP-Pro EX Reference Manual "Appendix 1.4 LS Area (Direct Access Method)"

- Please refer to the precautions on manual notation for icons in the table.

 "Manual Symbols and Terminology"

5.4 ControlLogix/CompactLogix Series

 This address can be specified as system data area.

Device	Bit Address	Word Address	32bits	Remarks
BOOL	BOOL000:000/00 - BOOL999:999/31	BOOL000:000 - BOOL999:999	-	*1
INT	-	 INT000:000 - INT999:999		 *1
REAL	-	REAL000:000 - REAL999:999	-	*1
DINT	-	DINT000:000 - DINT999:999	-	 *1
SINT	-	SINT000:000 - SINT999:998		  *1

*1 To access those addresses and use them in the program of the External Device, you need to set the External Device first.

The following procedure shows how to assign the device in the RSLogix5000 software and specify the address in GP-Pro EX.

1) External Device Tag Setting

Create a Tag Name in the RSLogix5000 software, and set the Data Type (normally an array the size of the number of registers desired). Map the created Tag Name to a File Number.

Tag Name	Set as desired.
Type	Select the data type from the following to set the Element. Match the device name of GP-Pro EX. BOOL(32bit data type) INT(word data type) DINT(dword data type) SINT(byte data type) REAL(float data type)

Set the range used in GP-Pro EX for the Element. The maximum Element that GP-Pro EX can access is 999.

If you do not define the Tag as an array, only one register is available to use.

(Example) Tag Name: When you set INT8, Type: INT, you can use only one word for INT8.

<Example 1>

Tag Name	Type
INT7	INT[200]
DINT1	DINT[100]
DATA2	SINT[50]

1st line: Tag Name "INT7" is INT data type with 200 elements

2nd line: Tag Name "DINT1" is DINT data type with 100 elements

3rd line: Tag Name "DATA2" is SINT data type with 50 elements

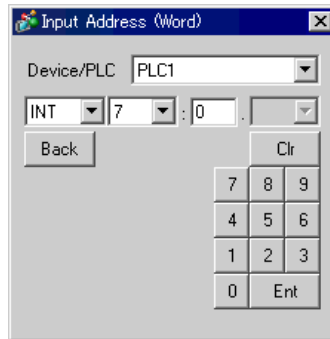
File Number	Assign the Tag Name created by RSLogix5000 to the optional File Number. You can not assign different Tag Names to the same File Number.
-------------	---

<Example 2>

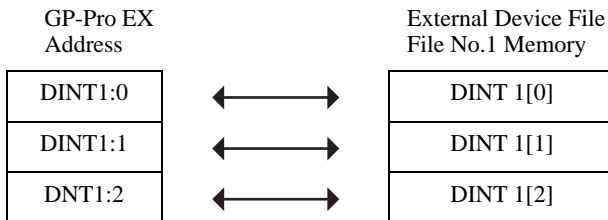
File Number	Name
2	DATA2
1	DINT1
7	INT7

2) Address Specification in GP-Pro EX

When you access the External Device from GP-Pro EX, specify Type, File Number, and Element.




<Example of address mapping of GP-Pro EX and External Device>


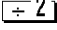


NOTE

- Please refer to the GP-Pro EX Reference Manual for system data area.
Cf. GP-Pro EX Reference Manual "Appendix 1.4 LS Area (Direct Access Method)"
- Please refer to the precautions on manual notation for icons in the table.
☞ "Manual Symbols and Terminology"

5.5 Control/Compact/Flex Logix Series Native

 This address can be specified as system data area.

Device		Bit Address	Word Address	32bits	Remarks
BOOL	Single Tag	<TAGNAME>		-	*1 *2 *3
	1D Array	<TAGNAME>[0]- <TAGNAME>[x-1]		-	
INT	Single Tag	<TAGNAME>.00- <TAGNAME>.15	<TAGNAME>	[L/H]	*1 *2
	1D Array	<TAGNAME>[0].00- <TAGNAME>[x-1].15	<TAGNAME>[0]- <TAGNAME>[x-1]		
	2D Array	<TAGNAME>[0,0].00- <TAGNAME>[x-1,y-1].15	<TAGNAME>[0,0]- <TAGNAME>[x-1,y-1]		
	3D Array	<TAGNAME>[0,0,0].00- <TAGNAME>[x-1,y-1,z-1].15	<TAGNAME>[0,0,0]- <TAGNAME>[x-1,y-1,z-1]		
REAL	Single Tag		<TAGNAME>	-	*1 *2
	1D Array		<TAGNAME>[0]- <TAGNAME>[x-1]		
	2D Array		<TAGNAME>[0,0] <TAGNAME>[x-1,y-1]		
	3D Array		<TAGNAME>[0,0,0]- <TAGNAME>[x-1,y-1,z-1]		
DINT	Single Tag	<TAGNAME>.00- <TAGNAME>.31	<TAGNAME>	-	*1 *2
	1D Array	<TAGNAME>[0].00- <TAGNAME>[x-1].31	<TAGNAME>[0]- <TAGNAME>[x-1]		
	2D Array	<TAGNAME>[0,0].00- <TAGNAME>[x-1,y-1].31	<TAGNAME>[0,0] <TAGNAME>[x-1,y-1]		
	3D Array	<TAGNAME>[0,0,0].00- <TAGNAME>[x-1,y-1,z-1].31	<TAGNAME>[0,0,0]- <TAGNAME>[x-1,y-1,z-1]		
SINT	Single Tag	<TAGNAME>.0- <TAGNAME>.7	<TAGNAME>	[L/H]	  *1 *2 *4
	1D Array	<TAGNAME>[0].0- <TAGNAME>[x-1].7	<TAGNAME>[0]- <TAGNAME>[x-1]		
	2D Array	<TAGNAME>[0,0].0- <TAGNAME>[x-1,y-1].7	<TAGNAME>[0,0]- <TAGNAME>[x-1,y-1]		
	3D Array	<TAGNAME>[0,0,0].0- <TAGNAME>[x-1,y-1,z-1].7	<TAGNAME>[0,0,0]- <TAGNAME>[x-1,y-1,z-1]		

continued on next page

Device		Bit Address	Word Address	32bits	Remarks
STRING	Single Tag	-	<TAGNAME>	-	*1 *2
	1D Array		<TAGNAME>[0]- <TAGNAME>[x-1]		
	2D Array		<TAGNAME>[0,0]- <TAGNAME>[x-1,y-1]		
	3D Array		<TAGNAME>[0,0,0]- <TAGNAME>[x-1,y-1,z-1]		

*1 <TAGNAME>: Tag Name including structure name in case of structure. The maximum number of characters for Tag Name is 255 including delimiters and element number. The maximum number of characters when using D-Script is limited to 54.

Ex.) BOOL type single tag: "BOOLTAG"
 BOOL array element: "BOOLARRAY[0012]"
 INT type single tag: "INTTAG"
 DINT type single address: "DINTTAG.30"
 REAL type 3Darray: "REALARRAY[1,2,3]"
 DINTfrom TIMER structure: "TIMERTAG.PRE"
 SINTfrom STRING structure: "STRINGTAG.DATA[00]"
 BOOL from User Defined Structure: "USERSTRUCTURE_A.USERSTRUCTURE_B.MYTIMER.EN"

*2 Array Element Number: Number of array element is included in the controller tag information. Since the element number starts from 0, maximum element number is [Element Number - 1].

Ex.) INTARRAY INT[256,256] can be used in the range of INTARRAY[0-255,0-255].

*3 BOOL type array: Available to define only 1 dimension. Number of array element can be specified by multiples of 32.

*4 SINT: Handled as 8-bit devices in the External Device, but as 16-bit devices in GP-Pro EX. When using the SINT type array as word, only even element number can be specified. When it is not an array or used for the last element in an odd array, the upper byte is set to 0.

NOTE

- A maximum of 65535 Controller Tag Indices can be consumed for each PLC. One index for each Tag or Array of an atomic type.

When the data type of a Tag is a structure, calculate the number of indices used with the following formula:

<Number of Controller Tag Indices>= (1 + <Number of Structure Members>) x <Number of Array Elements>

Ex: Timer[16]

Number of Controller Tag Index = (1 + 9) x 16

To use controller tags set up in the RSLogix5000 software on GP-Pro EX, the L5K file needs to be imported. The L5K file is exported by the RSLogix5000 software. The L5K data imported into GP-Pro EX is saved as a Tag Data Block.

IMPORTANT

- GP-Pro EX will not import L5K or CSV files for RSLogix5000 software version lower than 13.

In addition to controller scope or global tags, RSLogix5000 also provides for Program Scope Tags which are only valid within the PLC program they are created. GP-Pro EX will import these Program Scope Tags from L5K or CSV files exported from RSLogix5000.

The following derivative data types are provided by RSLogix5000, and are supported in GP-Pro EX.

- Predefined data type: a structure data type defined in RSLogix5000. All predefined types for RSLogix5000 version 13, 15, and 16 are supported in GP-Pro EX. (FS, LS, OV, and ER of TIMER Predefined types are not supported).
- Module defined data type: Data type defined according to a physical module being used in an RSLogix5000 project. GP-Pro EX determines the tags and data types needed for module definitions found in the L5K file. (Please refer to "Data Type Defined Module List" for all modules supported in GP-Pro EX).

 " ■ Data Type Defined Module List" (page 37)

- User defined data type: data type defined by the user in RSLogix. Its definition is exported into the L5K file.
- Alias: A tag name which refers to another tag or alias on the PLC.

Any LINT data type in the file exported by RSLogix is imported to GP-Pro EX as LINT_TC data type. LINT_TC data type is separated into data and time components.

To display LINT data type in GP-Pro EX as a date or time, use one of the submembers of the LINT_TC data type. (eg. MyLINT.MONTH will show the month in the LINT register). To display LINT as two 32 bit integer numbers, use the LINT_D data type for the tag after importing.

IMPORTANT

- If the exported file is imported after changing a tag to LINT_D data type, LINT_D is overwritten and changed to LINT_TC.
-

■ Data Type Defined Module List

◆ Modules that do not generate tags or data type/structures on import

1756-ENET/A	1756-L1	1756-L53
1756-HYD02	1756-EWEB/A	1768-ENBT/A
1756-L55	1756-L60M03SE	1756-L61
1756-L61S	1756-L62	1756-L62S
1756-LSP	1756-L63	1756-L64
1756-M02AE	1756-M02AS	1756-M03SE
1756-M08SE	1756-M08SEG	1756-M16SE
1768-L43	1768-EWEB/A	1769-L20
1769-L30	1769-L31	1769-L32E Ethernet Port
1769-L32E	1769-L35CR	1769-L35E
1769-L35E Ethernet Port	1788-ENBT/A	1788-EWEB/A
1789-L60	1794-L33	1794-L34
CompactBus	Emulator	ETHERNET-BRIDGE

◆ Modules that generate controller tags or data type/structures on import

1734-ACNR/A	1734-IA2/C	1734-IB2/C
1734-IB4/C	1734-IB8/C	1734-IE2C/C
1734-IE2V/C	1734-IJ/C	1734-IK/C
1734-IM2/C	1734-IR2/C	1734-IT2I/C
1734-IV2/C	1734-IV4/C	1734-IV8/C
1734-MODULE	1734-OA2/C	1734-OB2/C
1734-OB2E/C	1734-OB2EP/C	1734-OB4/C
1734-OB4E/C	1734-OB8/C	1734-OB8E/C
1734-OE2C/C	1734-OE2V/C	1734-OV2E/C
1734-OV4E/C	1734-OV8E/C	1734-OW2/C
1734-OW4/C	1734-OX2/C	1734-SSI/C
1734-VHSC24/C	1734-VHSC5/C	1738-ACNR/A
1738-IA2M12AC3/A	1738-IA2M12AC4/A	1738-IB2M12/A
1738-IB4M12/A	1738-IB4M8/A	1738-IB8M12/A
1738-IB8M23/A	1738-IB8M8/A	1738-IE2CM12/A
1738-IE2VM12/A	1738-IJM23/A	1738-IR2M12/A
1738-IT2IM12/A	1738-IV4M12/A	1738-IV8M12/A
1738-IV8M23/A	1738-IV8M8/A	1738-MODULE
1738-OA2M12AC3/A	1738-OB2EM12/A	1738-OB2EPM12/A
1738-OB4EM12/A	1738-OB4EM8/A	1738-OB8EM12/A

continued on next page

1738-OB8EM23/A	1738-OB8EM8/A	1738-OE2CM12/A
1738-OE2VM12/A	1738-OV4EM12/A	1738-OW4M12/A
1738-OW4M12AC/A	1738-SSIM23/A	1738-VHSC24M23/A
1747-ASB	1756-CFM/A	1756-CN2/A
1756-CN2/B	1756-CN2R/A	1756-CN2R/B
1756-CNB/A	1756-CNB/B	1756-CNB/D
1756-CNBR/D	1756-CNBR/A	1756-CNBR/B
1756-CNB/E	1756-CNBR/E	1756-DHRIO/B
1756-DHRIO/C	1756-DHRIO/D	1756-DMA30
1756-DMA31	1756-DMA50	1756-DMB30
1756-DMD30	1756-DMF30	1756-DNB
1756-EN2F/A	1756-EN2T/A	1756-ENBF/A
1756-ENBT/A	1756-ENET/B	1756-HSC
1756-IA16	1756-IA16I	1756-IA8D
1756-IB16	1756-IB16D	1756-IB16I
1756-IB16ISOE	1756-IB32	1756-IB32/A
1756-IB32/B	1756-IC16	1756-IF16
1756-IF4FXOF2F/A	1756-IF4FXOF2F/B	1756-IF6CIS/A
1756-IF6I	1756-IF8	1756-IG16/A
1756-IH16I	1756-IH16ISOE	1756-IM16I
1756-IN16	1756-IR6I	1756-IT6I
1756-IT6I2	1756-IV16/A	1756-IV32/A
1756-MODULE	1756-OA16	1756-OA16I
1756-OA8	1756-OA8D	1756-OA8E
1756-OB16D	1756-OB16E	1756-OB16I
1756-OB16IS	1756-OB32	1756-OB8
1756-OB8EI	1756-OC8	1756-OF4
1756-OF6CI	1756-OF6VI	1756-OF8
1756-OG16/A	1756-OH8I	1756-ON8
1756-OV16E/A	1756-OV32E/A	1756-OW16I
1756-OX8I	1756-PLS/B	1756-REG
1756-SYNCH/A	1769-HSC	1769-HSC/A
1769-IA16	1769-IA16/A	1769-IA8I
1769-IA8I/A	1769-IF4/A	1769-IF4/B
1769-IF4I/A	1769-IF4XOF2/A	1769-IF8/A
1769-IM12/A	1769-IQ16/A	1769-IQ16F/A
1769-IQ32/A	1769-IQ6XOW4/A	1769-IQ6XOW4/B

continued on next page

1769-IR6/A	1769-IT6/A	1769-MODULE
1769-OA16/A	1769-OA8/A	1769-OA8/B
1769-OB16/A	1769-OB16/B	1769-OB16P/A
1769-OB16P/B	1769-OB32/A	1769-OB8/A
1769-OF2/A	1769-OF2/B	1769-OF4CI/A
1769-OF4VI/A	1769-OF8C/A	1769-OF8V/A
1769-OV16/A	1769-OV16/B	1769-OW16/A
1769-OW8/A	1769-OW8/B	1769-OW8I/A
1769-OW8I/B	1769-SDN/A	1769-SDN/B
1771-ASB	1788-EN2DN/A	1794-ACN15/C
1794-ACNR15/C	1794-AENT/A	1794-AENT/B
1794-ASB	1794-IA16/A	1794-IA8/A
1794-IA8I/A	1794-IB10XOB6/A	1794-IB16/A
1794-IB16XOB16P/A	1794-IB32/A	1794-IB8/A
1794-IB8S/A	1794-IC16/A	1794-ID2/B
1794-IE4XOE2/B	1794-IE8/B	1794-IF2XOF2I/A
1794-IF4I/A	1794-IJ2/A	1794-IM8/A
1794-IP4/B	1794-IR8/A	1794-IRT8
1794-IRT8/A	1794-IT8/A	1794-IV16/A
1794-OA16/A	1794-OA8/A	1794-OA8I/A
1794-OB16/A	1794-OB16P/A	1794-OB32P/A
1794-OB8/A	1794-OB8EP/A	1794-OC16/A
1794-OE4/B	1794-OF4I/A	1794-OM8/A
1794-OV16/A	1794-OV16P/A	1794-OW8/A
1794-VHSC/A	1797-ACNR15/C	1797-IBN16/A
1797-IE8/A	1797-IE8NF/A	1797-IJ2/A
1797-IRT8/A	1797-OB4D/A	1797-OE8/A
56AMXN	CIP-MODULE	ETHERNET-MODULE
FlexBus	FLEX-MODULE	RIO-ADAPTER

■ Tag Data Dialog Settings

- Controller Tag List

The controller Tag List is displayed when "Tag/Alias" is selected in the [Edit Mode] of the tag data dialog.

Input the Tag Data Block name to save the controller tag and data type/structure information.

Select a PLC firmware version for the external device.

Filter tags that are displayed in the list using an arbitrary string.

Filtering by data type can be achieved by selecting the data type from the pull down menu.

Filter tags that are displayed in the list. Filtering by scope can be achieved by selecting a scope from the pull down menu.

These are operation buttons for making new tags, editing and deleting tags.

[View] displays the configuration of the selected tag.

[Import] opens the dialog box to import an L5K or CSV file into the current Tag Data Block.

[Export] exports the Tag Data to CSV file.

If a cursor is moved over a controller tag, the data type and size are displayed.

Displays controller tags and alias that are registered in the Tag Data Block.

Displays the total number of controller tag indices registered in the Tag Data Block, and the maximum available (65535).

Displays the total number of controller tags/aliases in the filtered display and the number currently selected.

- Data Type/Structure List

Data Type/Structure List is displayed when "Data Type/Structure" is selected in the [Edit Mode] of the tag data dialog.

Input the Tag Data Block name to save the controller tag and data type/structure information.

Select a PLC firmware version for the external device.

Filter data types/structures displayed by entering an arbitrary string.

These are the operation buttons for making new data types/structures, editing and deleting data types/structures. [View] displays the content of the selected data type/structure. [Import] opens the dialog box to import an L5K or CSV file into the current Tag Data Block. [Export] exports the Tag Data to CSV file.

Data types or structures registered in the tag data block are displayed. Displayed Text Colors mean:
 Light Gray: Data type/structure that is defined in the system. Cannot be deleted.
 Dark Gray: Data type/structure in use by other tags or structures. Can be deleted after the tags or structures using it are deleted.
 Black: Can be deleted.

Displays the total number of controller tag indices registered in the Tag Data Block, and the maximum available (65535).

Displays the total number of data type/structures appearing in the filtered display and the number currently selected.

NOTE

- An L5K or CSV file to be imported should be the same version as that selected in the [PLC version] in the [Controller Tag List] dialog.
 When an L5K or CSV file of a different PLC version is imported, the predefined definitions are converted to those matching the selected PLC Version. In addition, if a version 16 import file containing LINT data type tags is imported into a tag data block in which version 15 or 13 is selected, the LINT data type (and tags using it) will not be imported.
- GP-Pro EX can export to CSV file in two formats. The first is RSLogix compatible and only exports the tags from the Tag Data Block. This format can be imported into RSLogix provided the necessary data types are defined in the RSLogix project. It does not export any aliases imported to GP-Pro EX. The second is a Pro EX format which saves all tags, aliases and data type information. Importing it into another GP-Pro EX project will allow using all the same Tag Data in that project.

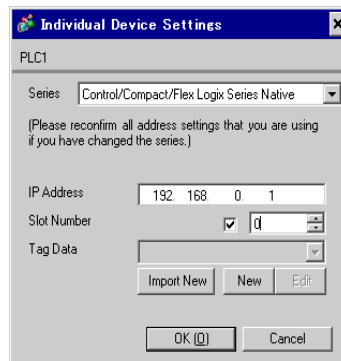
■ Importing Tag Data

- 1) Make a TagName using RSLogix5000 software and set the data type.
- 2) From [File] menu, select [Save As], and save the controller tag information in the L5K file.

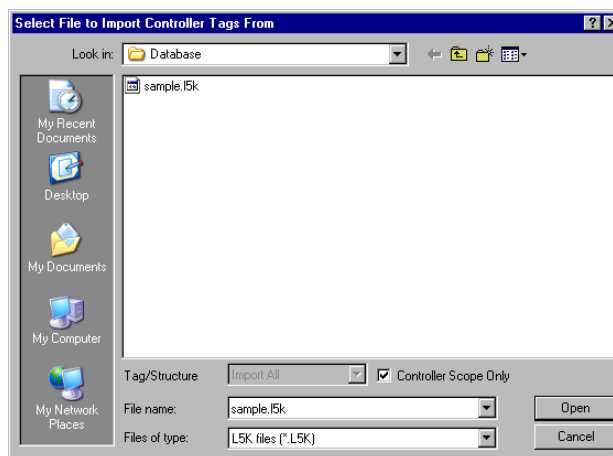
NOTE

- Import can also use CSV file. To export CSV from RSLogix5000, select [Export] from the [Tools] menu.
- CSV only includes tag information. Data type information is not included.

- 3) Go to the [Individual Device Settings] dialog box using GP-Pro EX and select "Control/Compact/Flex Logix Series Native" in the [Series] selector.



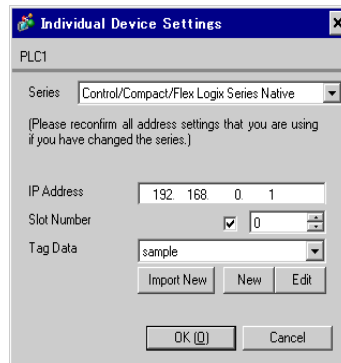
- 4) Click [Import New]. Select the L5K file to be imported and click [Open].



NOTE

- When importing controller scope tags only, select the [Controller Scope Only] check box beside the [Tag/Structure] list. To import Controller Scope tags and Program Scope tags uncheck this box.

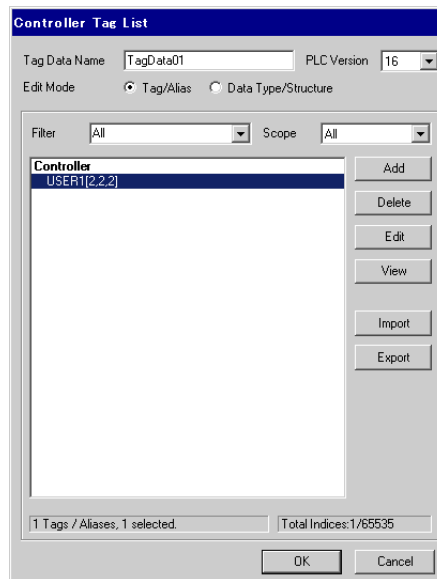
5) Import is executed and Tag Data Block is generated.


NOTE

- If any unsupported data types or tags are found during import, a log file can be generated. Using the dialog box displayed, set the name and the location of the log file to be saved. Import results can be confirmed in the log file.
- If a CSV file with tags of user defined data types is imported, and the types are not already defined in GP-Pro EX, the tags will not import. Review the log file for the tags not imported.
 ☞ " ■ Making a New Data Type" (page 47)
- A tag data block can be assigned to multiple external devices. Once a tag data block is created it can be selected in the [Individual Device Settings] dialog box for setting up a new External Device. If a tag data block assigned to multiple external devices is edited, the changes will affect all External Devices to which it is assigned.
 Multiple tag data blocks can be set up in a project as required (Max. 18).
- Clicking on the [Import New] button will cause the newly imported Tag Data Block to be assigned to the External Device in place of the current Tag Data Block.
- On closing the [Individual Device Settings] dialog box, any unassigned Tag Data Blocks can be deleted.

◆ Import into Existing Tag Data Block

When importing using the Import Button in the Controller Tag List Dialog, the Tag / Structure selector will be enabled and can be used to narrow the information to import.



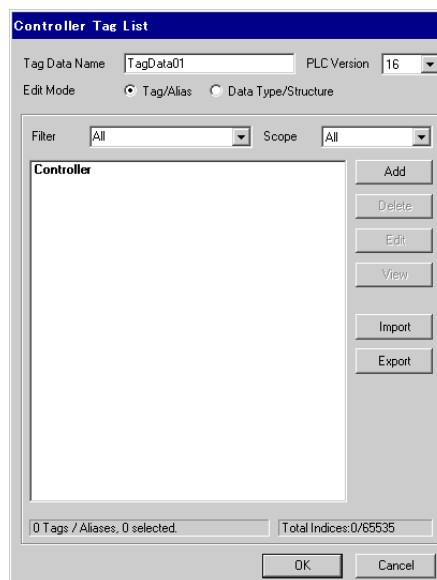
- **Import All:**
Imports all tag data into the current Tag Data Block. Tags and Data Types existing in the current Tag Data Block will be overwritten.
- **Import New Only:**
Imports only the Tag Data which does not already exist in the current Tag Data Block.
- **Import Matching Only:**
Imports only the Tag Data which already exists in the current Tag Data Block. Tags and Data Types will be overwritten.

■ Making a New Tag

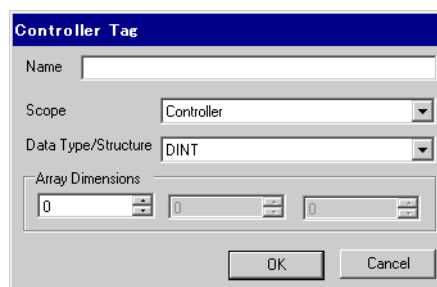
- 1) Go to the [Individual Device Settings] dialog box using GP-Pro EX, select "Control/Compact/Flex Logix Series Native" from [Series].



- 2) Click [New]. Input the tag data name to be made in [Tag Data Name] and select a PLC firmware version for the external device in the [PLC Version] selector.



- 3) Select [Tag/Alias] from [Edit Mode].
- 4) Click [Add] to display the [Controller Tag] dialog box.



5) Input the Name, Data Type/Structure, and Array Dimensions, then click [OK].

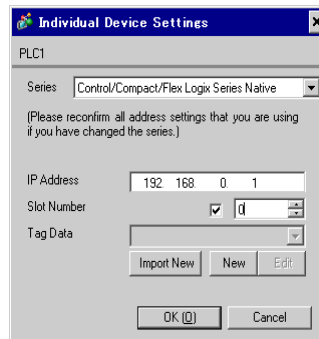
NOTE • Only registered data types can be selected at [Data Type/Structure]. Register data types as necessary.

☞ " ■ Making a New Data Type" (page 47)

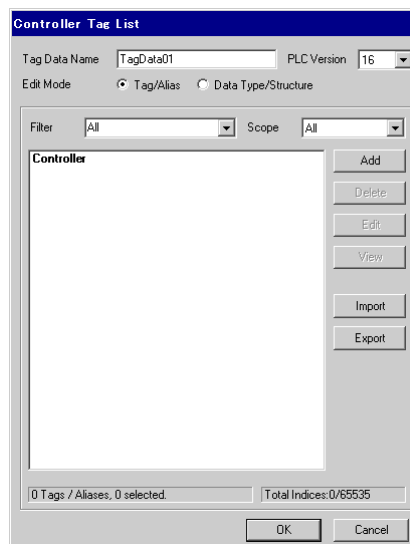
The newly created controller tag is displayed in the list.

■ Making a New Data Type

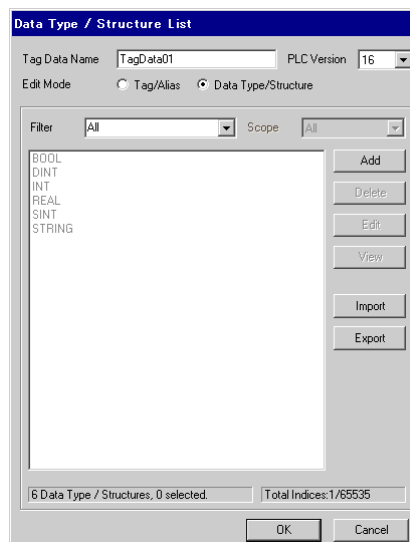
- 1) Go to the [Individual Device Settings] using GP-Pro EX, and select "Control/Compact/Flex Logix Series Native" from [Series].



- 2) Click [New]. Input the name of the tag data block to be made in [Tag Data Name].



- 3) Select [Data Type/Structure] for the [Edit Mode].



- 4) Click [Add] to display [Data Type/Structure Edit] dialog box.

Data Type / Structure Edit

Structure Name

Members

Name	Data Type	Array
*		

Paste Structure Data OK Cancel

- 5) Input the name of Data Type/Structure and members desired, then click [OK].

Data Type / Structure Edit

Structure Name
 USERSTRUCT

Members

Name	Data Type	Array
PARA1	INT	0
▶ PARA2	STRING	0
*		

Paste Structure Data OK Cancel

NOTE

- To copy the members of a structure directly from RSLogix into this dialog, select the desired structure in RSLogix5000 software. Copy the [Name] and [Data Type] columns. Paste these members into a structure in GP-Pro EX using the [Paste Structure Data] button.
- For using Predefined structures, select the structure to be used from the [Structure Name] drop-down list, and click [OK].
- Only one-dimensional arrays can be used as structure members.

The newly created data type/structure is displayed in the list. Registered data type/structures can be used for importing, adding and editing controller tags.

Data Type / Structure List

Tag Data Name: TagData01 PLC Version: 16

Edit Mode: Tag/Alias Data Type/Structure

Filter: All Scope: All

BOOL
DINT
INT
REAL
SINT
STRING
USERSTRUCT

Add Delete Edit View

Import Export


7 Data Type / Structures, 1 selected Total Indices: 1/65535

OK Cancel

NOTE

- A warning message " Display Unit Illegal address. Define a correct address." may appear during Error Check if no non-BOOL tags exist in the Tag Data Block. This indicates that the default value assignment for one or more system settings were not made since there were no suitable tags available. This is not related to screen settings and system settings made by the user.
- When you use [Copy from Another Project] ([Project] menu in GP-Pro EX - [Utility] - [Copy from Another Project]) with Control/Compact/Flex Logix Series Native, the address settings specified for the copied screen may be changed to "Undefined". Check the address settings after copying a screen.
- Please refer to the GP-Pro EX Reference Manual for system data area.

Cf. GP-Pro EX Reference Manual "Appendix 1.4 LS Area (Direct Access Method)"

- Please refer to the precautions on manual notation for icons in the table.
 "Manual Symbols and Terminology"

6 Device Code and Address Code

Use device code and address code when you select "Device Type & Address" for the address type in data displays.

- NOTE** • When [Control/Compact/Flex Logix Series Native] is selected for the External Device Series, the device code and address code must not be used.

Device	Device Name	Device Code (HEX)	Address Code	
Integer File	N	0000	(File No.*0x10000) + Word Address	
Floating Point File	F	0001	(File No.*0x10000) + Word Address	
String File	ST	0002	(File No.*0x10000) + Word Address*0x40	
ASCII File	A	0003	(File No.*0x10000) + Word Address	
BCD File	D	0004	(File No.*0x10000) + Word Address	
Long Word File	L	0005	(File No.*0x10000) + Word Address	
INT	INT	0010	(File No.*0x10000) + Word Address	
REAL	REAL	0011	(File No.*0x10000) + Word Address	
DINT	DINT	0012	(File No.*0x10000) + Word Address	
SINT	SINT	0013	(File No.*0x10000) + Word Address/2	
Input File	I	0080	0x10000+(Slot Number*0x100) + Word Address	
Output File	O	0081	(Slot No.*0x100) + Word Address	
Bit File	B	0082	(File No.*0x10000) + Word Address	
Status File	S	0083	0x20000 + Word Address	
BOOL	BOOL	0090	(File No.*0x10000) + Word Address	
Timer File	T	PRE	0060	(File No.*0x10000) + Word Address
		ACC	0061	
Counter File	C	PRE	0062	(File No.*0x10000) + Word Address
		ACC	0063	
Control File	R	LEN	0064	(File No.*0x10000) + Word Address
		POS	0065	

7 Error Messages

Error messages are displayed on the screen of the Display as follows: "No. : Device Name: Error Message (Error Location)". Each description is shown below.

Item	Requirements
No.	Error No.
Device Name	Name of the External Device where error occurs. Device name is a title of the External Device set with GP-Pro EX.
Error Message	Displays messages related to the error which occurs.
Error Location	Displays IP address or device address of the External Device where error occurs, or error codes received from the External Device. <div style="border: 1px solid black; padding: 2px; margin-top: 5px;"> NOTE <ul style="list-style-type: none"> IP address is displayed such as "IP address (Decimal): MAC address (Hex)". Device address is displayed such as "Address: Device address". Received error codes are displayed such as "[Hex]". </div>

Display Examples of Error Messages

"RHAA130:PLC1: Error has been responded for device write command (Encapsulation Error Code:[00000002H])"

NOTE

- Refer to your External Device manual for details on received error codes.
- Refer to "When an error is displayed (Error Code List)" in "Maintenance/Troubleshooting Manual" for details on the error messages common to the driver.

Driver-Specific Error Messages

Driver-specific error messages are shown below.

Code (HEX)	Error Message	Description
RHxx128	(External Device Name): Error has been responded for initial communication command (Encapsulation Error Code: [(Hex)])	Displayed when error occurs by device initial command.
RHxx129	(External Device Name): Error has been responded for device read command (Encapsulation Error Code: [(Hex)])	Displayed when error occurs by device read command.
RHxx130	(External Device Name): Error has been responded for device write command (Encapsulation Error Code: [(Hex)])	Displayed when error occurs by device write command.
RHxx131	(External Device Name): Error has been responded for device read command (CIP Error Code: [(Hex)])	Displayed when error occurs by device read command.
RHxx132	(External Device Name): Error has been responded for device write command (CIP Error Code: [(Hex)])	Displayed when error occurs by device write command.
RHxx133	(External Device Name): Error has been responded for device read command (STS Response: [(Hex)]), EXT Response: [(Hex)]	Displayed when error occurs by device read command.
RHxx134	(External Device Name): Error has been responded for device write command (STS Response: [(Hex)]), EXT Response: [(Hex)]	Displayed when error occurs by device write command.

