

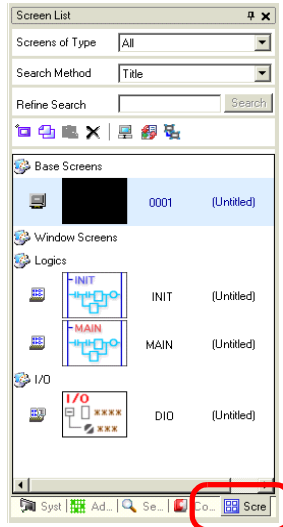
31.3 Mapping I/O to the GP Built-in DIO

31.3.1 I/O Terminals in the GP Built-in DIO

Displays the I/O and maps addresses to the I/O terminals in the GP built-in DIO.

■ I/O Display Method

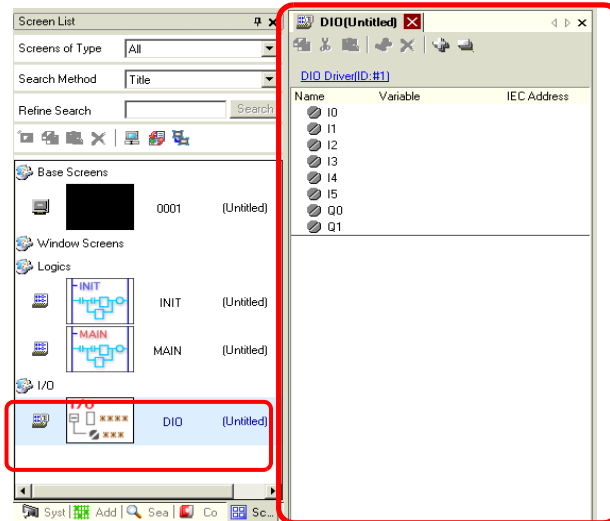
- 1 Click the [Screen List] tab to open [Screen List] Window.



NOTE

- If the [Screen List] tab is not displayed in the Work Space, on the [View (V)] menu, point to [Work Space (W)] and then click [Screen List (G)].

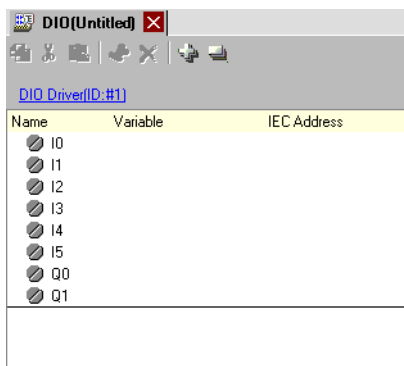
- 2 Double-click I/O to display the I/O in the workspace.



NOTE

- For how to map addresses to I/O terminals, refer to the following section.
 ➞ “31.1.2 Mapping Addresses to I/O Terminals” (page 31-7)

31.3.2 I/O Setup Guide



Setting		Description
Copy		To copy a variable select it and click the icon.
Cut		To cut a variable select it and click the icon.
Paste		To paste a variable, Copy or Cut it to the clipboard and then click the icon.
Edit		To change a variable or register a new variable, select it and click the icon.
Delete		To delete a variable select it and click the icon.
Expand All		Expands to display all I/O terminals.
Collapse All		Collapses to hide display of all I/O terminals.
DIO Driver (ID:#1)		Click to switch to the I/O Driver settings screen.
Name		Displays the terminal ID symbol.
Variable		Displays the address mapped to the terminal.
IEC Address		Displays the I/O address (IEC address).
DIO Driver (ID:#1)		Click to switch to the I/O Driver settings screen.