

4 | Workflow Procedure

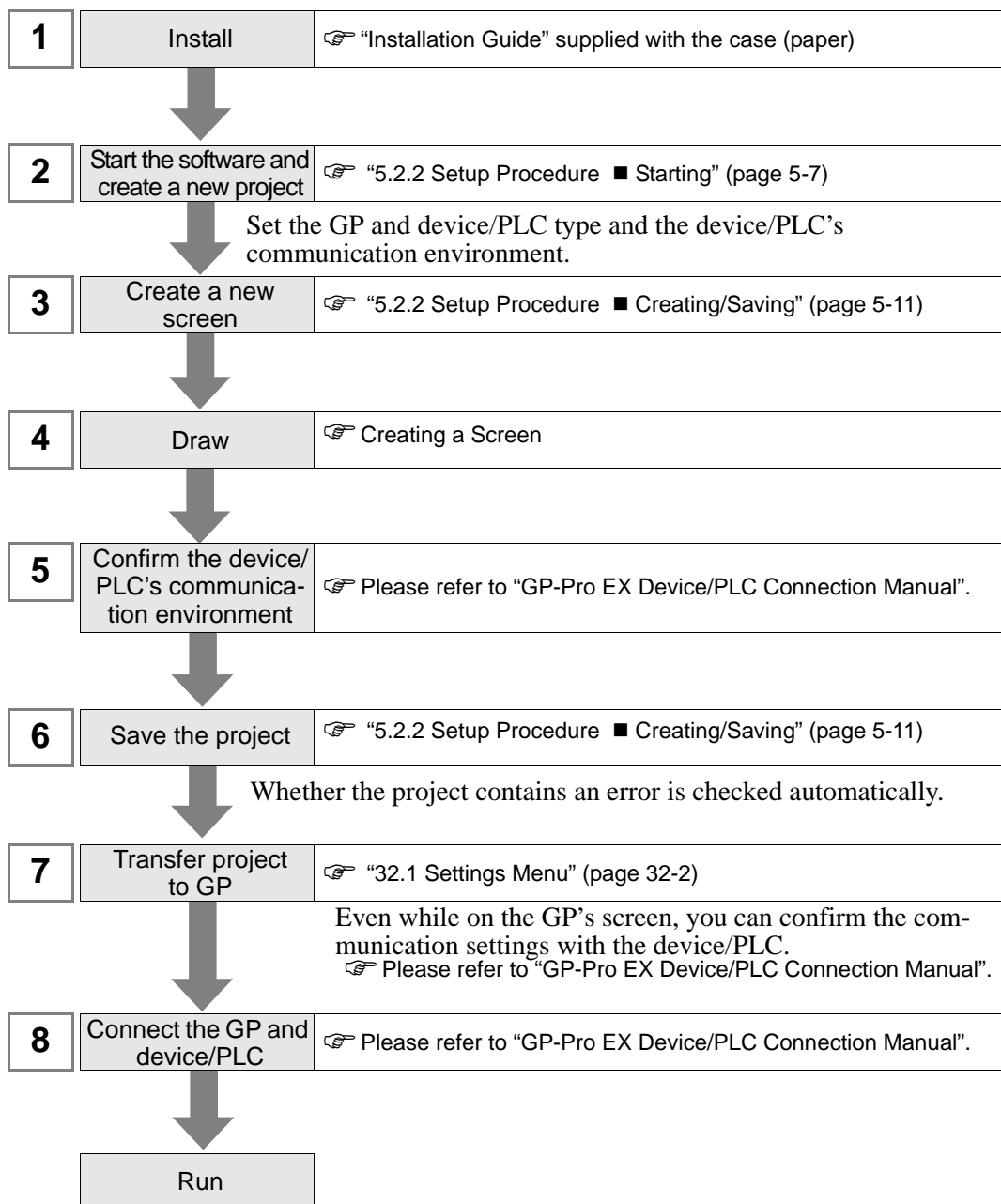
This chapter explains about the development procedure in GP-Pro EX.

4.1	When Only Creating Screens.....	4-2
4.2	Creating a Screen and Logic Program.....	4-3

4.1 When Only Creating Screens

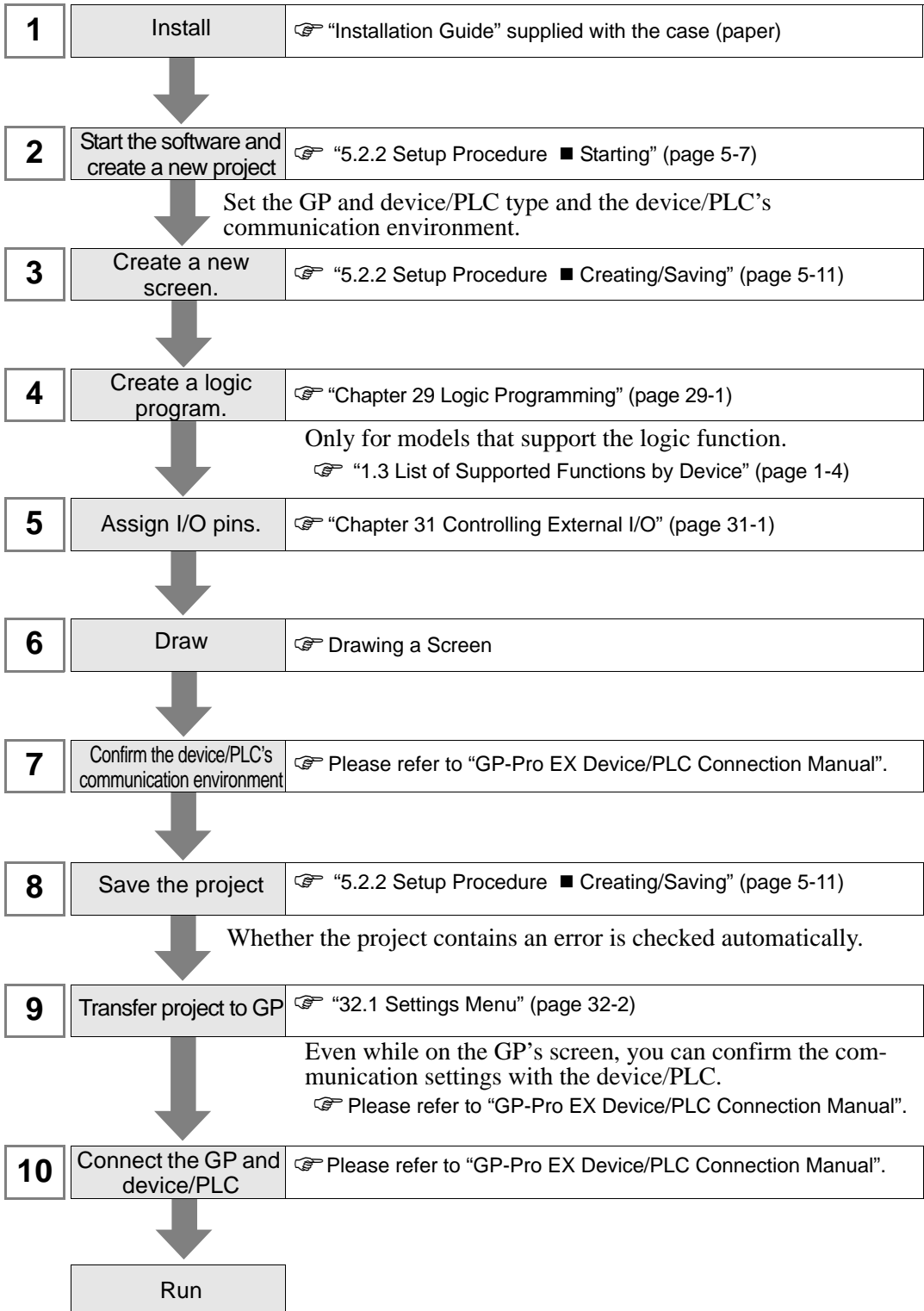
The following shows the work flow for only creating screens, consisting of installing GP-Pro EX, starting the software, creating the screens, and connecting to the device/PLC, up to the operation of the GP-Pro EX.

Click the reference to go to the corresponding page.



4.2 Creating a Screen and Logic Program

The following shows the work flow for creating both a screen and a logic program, consisting of installing GP-Pro EX, starting the software, creating the screens, and connecting to the device/PLC, up to the operation of the GP-Pro EX.
Click the reference to go to the corresponding page.



Memo