

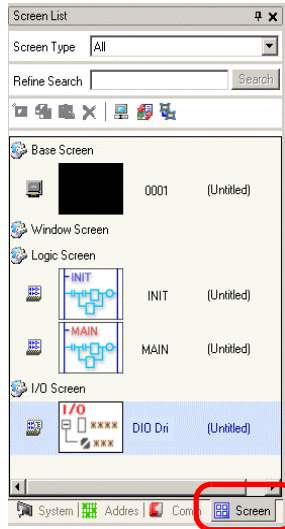
31.3 Mapping I/O to the GP Built-in DIO

31.3.1 I/O Terminals in the GP Built-in DIO

Displays the I/O Screen and maps addresses to the I/O terminals in the GP built-in DIO.

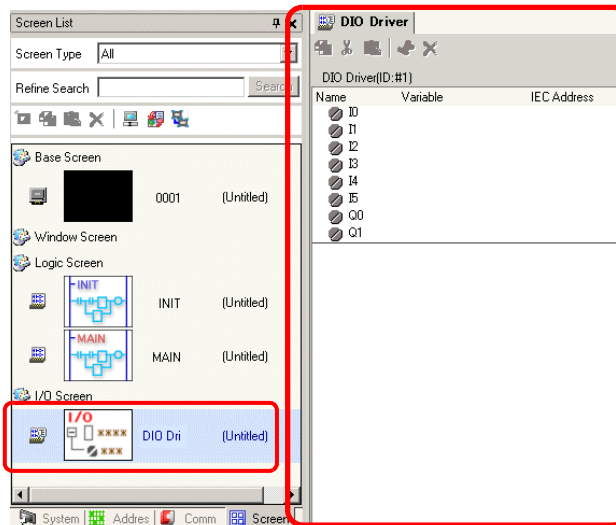
■ Displaying the I/O Screen

- 1 Click the [Screen List] tab to open the [Screen List] Window.



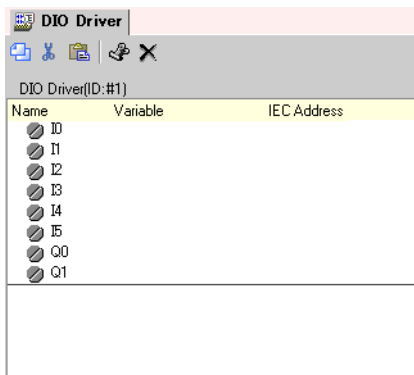
- NOTE** • If the [Screen List] tab is not displayed in the Work Space, on the [View (V)] menu, point to [Work Space (W)] and then click [Screen List Window (G)].






- 2 Double-click the [I/O Screen] to display the I/O in the workspace.



- NOTE** • For how to map addresses to I/O terminals, refer to the following section.
 ☞ “31.1.2 Mapping Addresses to I/O Terminals” (page 31-4)

31.3.2 I/O Screen Setup Guide



Setting		Description
Copy		To copy a variable select it and click the icon.
Cut		To cut a variable select it and click the icon.
Paste		To paste a variable, Copy or Cut it to the clipboard and then click the icon.
Edit		To change a variable or register a new variable, select it and click the icon.
Delete		To delete a variable select it and click the icon.
Name		Displays the terminal ID symbol.
Variable		Displays the address mapped to the terminal.
IEC Address		Displays the I/O address (IEC address).