

## 31.6 Mapping I/O to the FLEX NETWORK Positioning Unit


### 31.6.1 Device Settings of the FLEX NETWORK

When connecting a FLEX NETWORK unit to the GP, select the display model which supports it.

You can connect multiple I/O units.

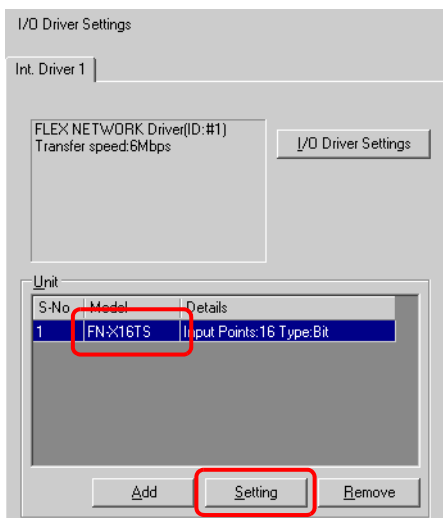
#### ■ Model of FlexNetwork Positioning Unit and Number of Occupied Stations

The following table lists the type and number of points, and number of occupied stations for FLEX NETWORK positioning unit.

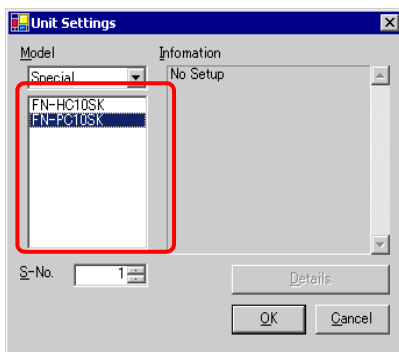
Type	Model	No. of Points	No. of Occupied Stations	Page for Details
Positioning	FN-PC10SK	-	4 stations	 page 31-28

#### ■ Setup Procedure

1 In the I/O Driver Settings window, select the I/O unit to be configured, and click [Setting].



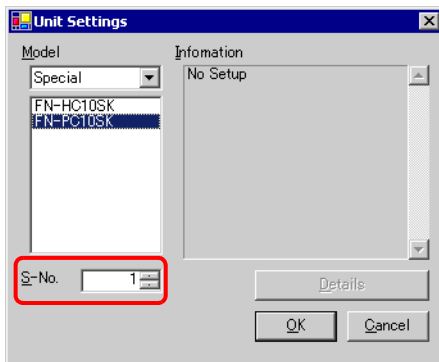
2 The [Unit Settings] dialog box is displayed. To change the type, in the [Model] area, select the model of I/O unit. (e.g. [Special] and “FN-PC10SK”).



#### NOTE

- The type of the I/O unit can be selected in the top left menu.
- On the right, the detailed specifications for the selected I/O unit are displayed.

3 In [S-No.] enter the S-No. for the connected I/O unit.



- NOTE**
- 1 to 63 can be specified for S-No., and the same S-No. cannot be set in the same FLEX NETWORK.
- ☞ “ ■ Model of FlexNetwork Positioning Unit and Number of Occupied Stations” (page 31-28)

4 In the [Unit Settings] dialog box, click [OK] to apply the changed settings.

S-No	Model	Details
1	FN-PC10SK	No Setup

5 To add an I/O unit, click [Add]. In the displayed [Unit Settings] dialog box, specify the settings in the same way as in steps 2 to 4.

- NOTE**
- To add other types, refer to the descriptions of each type.
    - ☞ “31.4 Mapping I/O to the FLEX NETWORK DIO Unit” (page 31-14)
    - ☞ “31.5 Mapping I/O to the FLEX NETWORK Analog Unit” (page 31-21)
    - ☞ “31.7 Mapping I/O to the FLEX NETWORK High-Speed Counter Unit” (page 31-33)

6 After completing the device settings for the FLEX NETWORK, map the addresses to the I/O terminals.

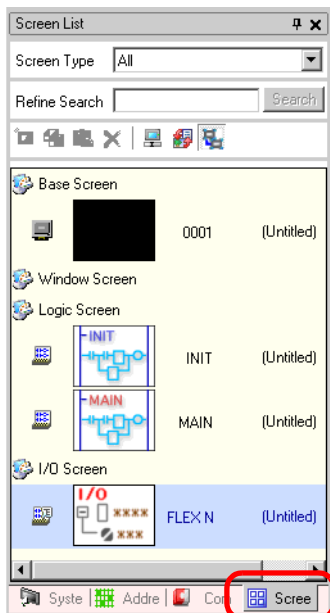
- NOTE**
- ☞ “31.6.2 I/O Terminals in the FLEX NETWORK Positioning Unit” (page 31-30)

## 31.6.2 I/O Terminals in the FLEX NETWORK Positioning Unit

Displays the I/O Screen and maps addresses to the I/O terminals in the FLEX NETWORK positioning unit.

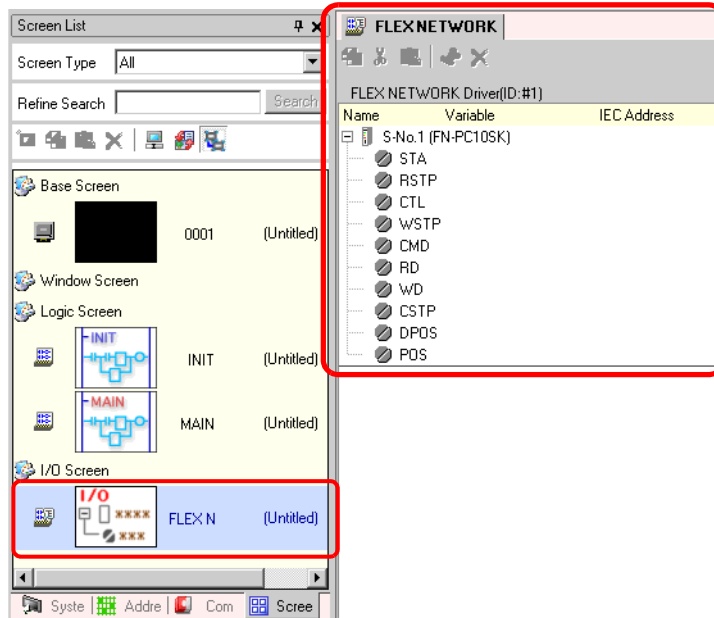
### ■ Displaying the I/O Screen

- 1 Click the [Screen List] tab to open [Screen List] Window.



- 
- NOTE** • If the [Screen List] tab is not displayed in the Work Space, on the [View (V)] menu, point to [Work Space (W)] and then click [Screen List Window (G)].
-

2 Double-click the [I/O Screen] to display the I/O in the workspace.



**NOTE** • For how to map addresses to I/O terminals, refer to the following section.  
 ☞ “31.1.2 Mapping Addresses to I/O Terminals” (page 31-4)

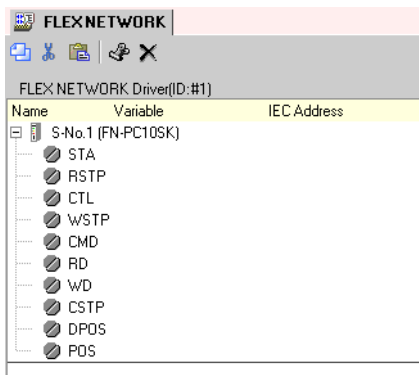
## ■ I/O Terminal Operations

An I/O terminal to which an address is mapped operates as described below.

- Specifies the data value by reading or writing by a command, and determines the position.
- For details on commands, refer to “Positioning Unit Users Manual 6.1 FLEX NETWORK Driver Settings” and “Positioning Unit Users Manual 5.2 Operation Data Settings”.
- If a power interruption occurs on the I/O unit, the driver can recognize it and resume communications after the power is resumed.

### 31.6.3 Setup Guide for the FLEX NETWORK Positioning Unit

#### ■ I/O Screen



Setting		Description
Copy		To copy a variable select it and click the icon.
Cut		To cut a variable select it and click the icon.
Paste		To paste a variable, Copy or Cut it to the clipboard and then click the icon.
Edit		To change a variable or register a new variable, select it and click the icon.
Delete		To delete a variable select it and click the icon.
Name		Displays the terminal ID symbol.
Variable		Displays the address mapped to the terminal.
IEC Address		Displays the I/O address (IEC address).

#### ■ Unit Detail Settings

It is not necessary to specify the details for the positioning unit.