

31.4 Mapping I/O to the FLEX NETWORK DIO Unit

31.4.1 Device Settings for the FLEX NETWORK

When connecting a FLEX NETWORK unit to the GP, select the display model which supports it.

You can connect multiple I/O units.

■ Model of FLEX NETWORK DIO Unit and Number of Occupied Stations

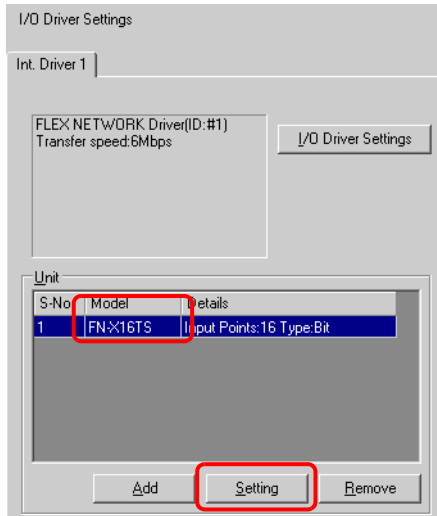
The following table lists the type and number of points, and number of occupied stations for the FLEX NETWORK DIO unit.

For example, when a I/O unit with 32 input points and 32 output points (a total of 64 points) is used, S-No.1 to S-No.4 are used if S-No.1 is set.

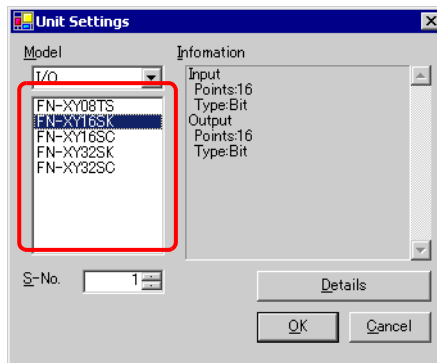
Type	Model	No. of Points	No. of Occupied Stations
DIO	FN-X16TS	16 input points	1 station
	FN-X32TS	32 input points	2 stations
	FN-Y08RL	8 output points	1 station
	FN-Y16SK	16 output points	1 station
	FN-Y16SC	16 output points	1 station
	FN-XY08TS	8 input points 8 output points	1 station
	FN-XY16SK	16 input points 16 output points	1 station
	FN-XY16SC	16 input points 16 output points	1 station
	FN-XY32SK	32 input points 32 output points	4 stations
	FN-XY32SC	32 input points 32 output points	4 stations

■ Setup Procedure

1 In the I/O Driver Settings window, select the I/O unit to be configured, and click [Setting].

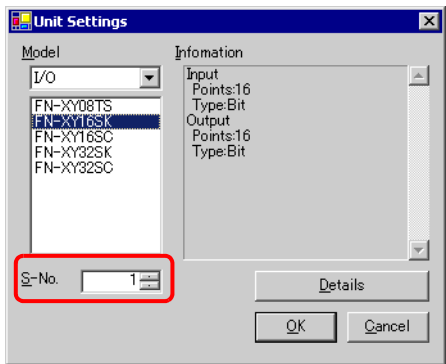


2 The [Unit Settings] dialog box will be displayed. To change the type, in the [Model] area, select the model of I/O unit. (e.g. [I/O] and “FN-XY16SK”).



-
- NOTE**
- The type of the I/O unit can be selected in the top left menu.
 - On the right, the detailed specifications for the selected I/O unit are displayed.
-

3 In [S-No.] enter the S-No. for the connected I/O unit.



- NOTE**
- 1 to 63 can be specified for S-No., and the same S-No. cannot be specified in the same FLEX NETWORK.
- ☞ “ ■ Model of FLEX NETWORK DIO Unit and Number of Occupied Stations” (page 31-14)

4 To change the details for the I/O unit, click [Details].

5 The [Details] dialog box is displayed. Change the settings and click [OK].

- NOTE**
- For the unit detail settings, refer to the following section.
- ☞ “31.4.3 Setup Guide for the FLEX NETWORK DIO Unit ■ Unit Detail Settings” (page 31-20)

6 In the [Unit Settings] dialog box, click [OK] to apply the changed settings.

S-No	Model	Details
1	FN-XY16SK	Input Points:16

7 To add an I/O unit, click [Add]. In the displayed [Unit Settings] dialog box, specify the settings in the same way as in steps 2 to 6.

- NOTE**
- To add other types, refer to the descriptions of each type.
- ☞ “31.5 Mapping I/O to the FLEX NETWORK Analog Unit” (page 31-21)
- ☞ “31.6 Mapping I/O to the FLEX NETWORK Positioning Unit” (page 31-28)
- ☞ “31.7 Mapping I/O to the FLEX NETWORK High-Speed Counter Unit” (page 31-33)

8 After completing the device settings for the FLEX NETWORK, map the addresses to the I/O terminals.

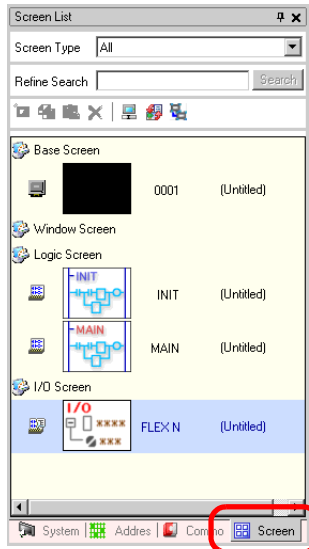
- NOTE**
- ☞ “31.4.2 I/O Terminals in the FLEX NETWORK DIO Unit” (page 31-17)

31.4.2 I/O Terminals in the FLEX NETWORK DIO Unit

Displays the I/O Screen and maps addresses to the I/O terminals of the FLEX NETWORK DIO unit.

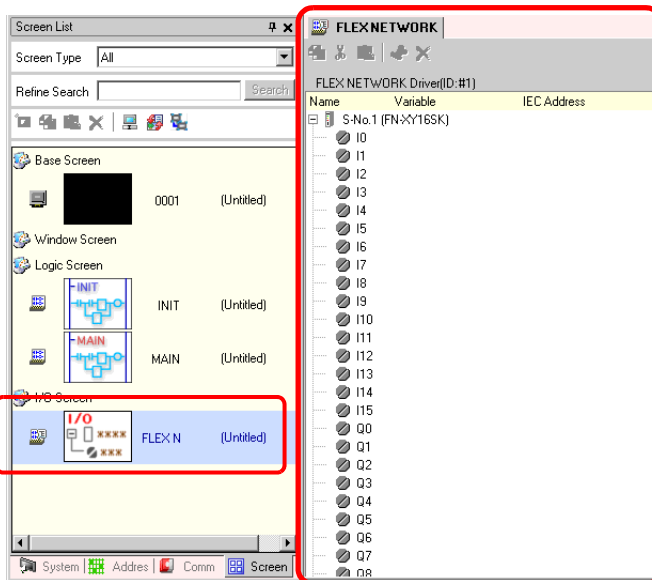
■ Displaying the I/O Screen

1 Click the [Screen List] tab to open [Screen List] Window.



NOTE • If the [Screen List] tab is not displayed in the Work Space, on the [View (V)] menu, point to [Work Space (W)] and then click [Screen List Window (G)].

2 Double-click the [I/O Screen] to display the I/O in the workspace.



NOTE • For how to map addresses to I/O terminals, refer to the following section.
 ➔ “31.1.2 Mapping Addresses to I/O Terminals” (page 31-4)

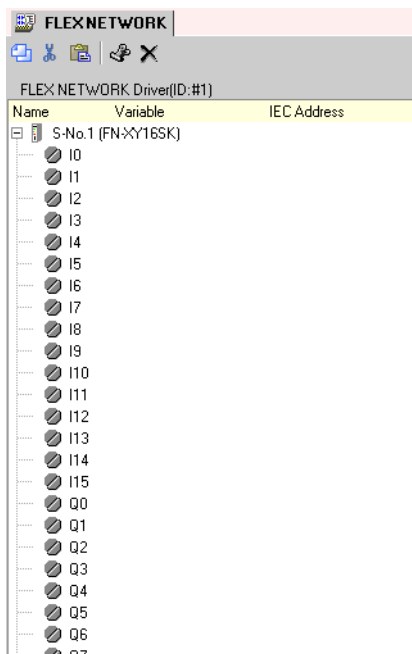
■ I/O Terminal Operations






An I/O terminal to which an address is mapped operates as described below.

- When the input terminal turns ON, the address mapped to the terminal turns ON.
- When the address mapped to the output terminal turns ON, the terminal turns on.
- If the address is a word, the address bits mapped to the terminal turn ON or OFF.
- If a power interruption occurs on the I/O unit, the driver can recognize it and resume communications after power is restored.

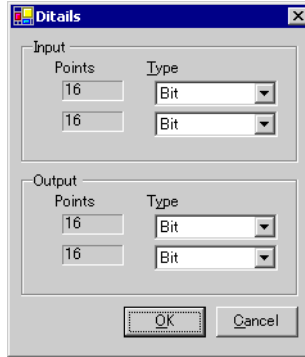
31.4.3 Setup Guide for the FLEX NETWORK DIO Unit

■ I/O Screen



Setting		Description
Copy		To copy a variable select it and click the icon.
Cut		To cut a variable select it and click the icon.
Paste		To paste a variable, Copy or Cut it to the clipboard and then click the icon.
Edit		To change a variable or register a new variable, select it and click the icon.
Delete		To delete a variable select it and click the icon.
Name		Displays the terminal ID symbol.
Variable		Displays the address mapped to the terminal.
IEC Address		Displays the I/O address (IEC address).

■ Unit Detail Settings



32 input and output points (FN-XY32SK)

Setting	Description
Input	Select the variable type for the input from either [Bit] or [Word]. The 8, 16, or 32 points change depending on the type of I/O unit. [Bit] is set by default.
Output	Select the variable type for the output from either [Bit] or [Word]. The 8, 16, or 32 points change depending on the type of I/O unit. [Bit] is set by default.