

## Connecting Rockwell (Allen-Bradley) PLC

### SLC500 Series (Ethernet)

#### Selecting PLC Type

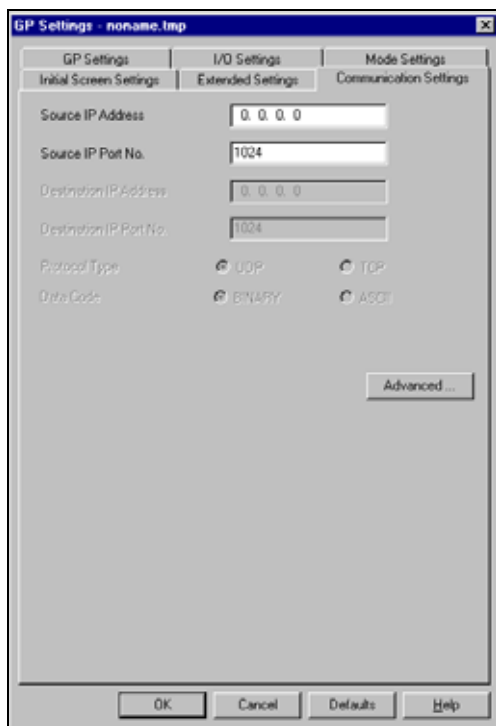
Start GP-Pro/PBIII.

When creating a project file, select the PLC type shown below.



## Example of Communication Settings

### 1. Communication settings



### 1. Communication Settings

#### Source IP Address (0 to 255)

Contact the network administrator about the IP address to be input.

#### Source IP Port No. (1024 to 65535)

Set GP's Port No.. \*1

#### Destination IP Address (0 to 255)

This setting is not used. Even if set, it'll be disabled.

#### Destination Port No. (1024 to 65535)

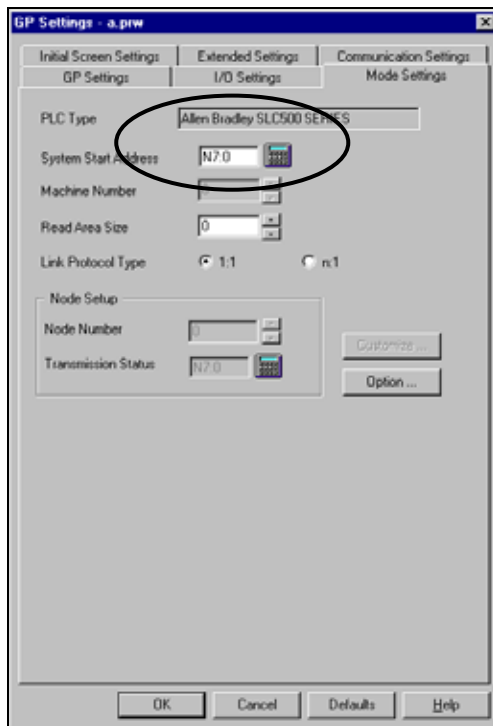
This setting is not used. Even if set, it'll be disabled. \*1

#### Protocol Type

This setting is not used. Even if set, it'll be disabled.

\*1- As the numbers, 8000 to 8999, are used for Pro-Server, do not use them.

## 2. Mode Settings



## 2. Mode Settings

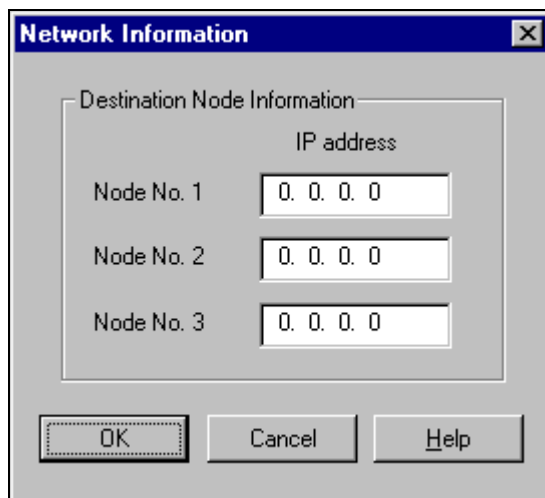
### System Start Address

The INT Device is fixed.

Array No. and Element No. are set arbitrarily.

The system start address is assigned to the designated node of PLC.

## 3. Network Information Settings



## 3. Network Information Settings

### Designation Node No. Setting

Set the IP address of the designation PLC to each node number.

Up to 3 nodes are possible for settings.

GP Settings		PLC Settings	
Source IP Address	GP' IP address * <sup>1</sup>	_____	_____
Source IP Port No.	GP's port No. * <sup>2</sup>	_____	_____
Network Information Setting	PLC's IP address * <sup>1</sup>	IP Address	PLC's IP address

\*1 Contact your network administrator about the setting values. If the Source IP Address is 0.0.0.0, the IP address set on the 2WAY Driver's side will be effective.

\*2 With GP2000 series, if Internal Ethernet Port is used, set the target port No. that does not overlap with the 2WAY Driver's port No. Check the 2WAY Driver's port number setting via the following menu:

[INITIALIZE]-->[SETUP OPERATION SURROUNDINGS]-->[EXTENDED SETTINGS]-->[SETUP ETHERNET INFORMATION]. The default value is 8000. The 2WAY Driver uses this port and the following nine ports for a total of 10 (8000 to 8009).

**Important!** PLC's Port No. is 2222(fixed). Protocol Type is TCP/IP Connection.

Select [Transfer] --> [Setup] --> [Transfer Settings].

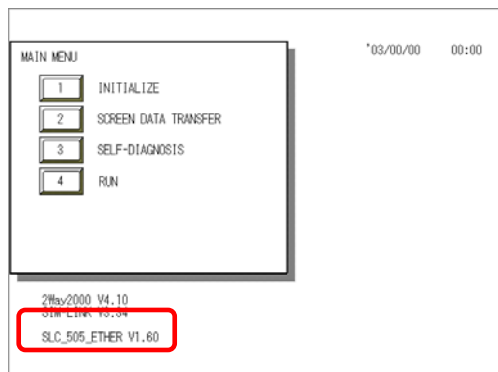
#### 4) Transfer Settings

#### 4) Transfer Settings GP System Settings: Checked

Transfer to GP after settings completed.

## 2 [Settings on the GP unit]

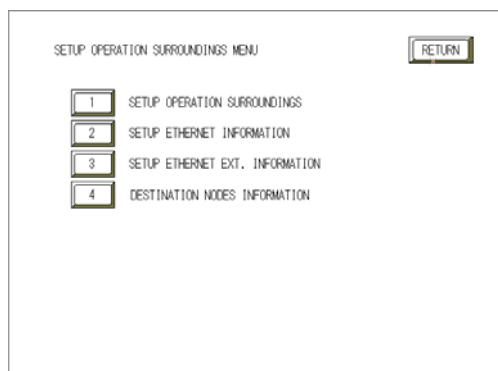
### 1. Checking GP Type



### 1. Checking GP Type

If Allen Bradley SLC5/05(ETHER) is selected, the following display will appear.  
[SLC505\_ETHER]

### 2. Settings on GP



### 2. Communication Settings

#### SETUP OPERATION SURROUNDINGS

[MAIN MENU]

[INITIALIZE]

[PLC SETUP]

[PLC SETUP]

[SETUP OPERATION SURROUNDINGS]

### SET UP ETHERNET INFORMATION

```

SRC IP ADDRESS      [      ]. [      ]. [      ]. [      ]
SRC PORT NO.        [      ]

```

[illegible]

Set GP's Port No. (from 1024 to 65535).



With GP2000 series, if Internal Ethernet Port is used, the source port number that does not overlap with the 2Way Driver's port number must be set. The 2Way Driver's port number can be checked with [INITIALIZE]-->[SETUP OPERATION SURROUNDINGS]-->[EXTENDED SETUP]-->[ETHERNET SETUP]. The numbers from 8000 to 8999 cannot be used because they are used for Pro-Server. If the source IP address is 0.0.0.0., the IP address set on the 2Way side is effective.

## DESTINATION NODE

[illegible]

Please use GP-PRO/PB3 to change them.

It's not impossible to set or change the destination node information via OFFLINE. Select GP-PRO/PB for Windows's [GP SETUP]-->[Mode Settings]-->[Network] to set or change it.