

## Connecting Rockwell (Allen-Bradley)

### ControlLogix 5000 Series Ethernet

#### Selecting PLC Type

Start up GP-PRO /PBIII.

Select the following PLC Type when creating the project file.



## Communication Settings [GP]

### 1 [GP-PRO/PB C-Package Setting]

Select [GP Setup] on Project Manager.

#### 1) Communication Settings



#### 1) Communication Settings

- Source IP Address ( 0 to 255 )  
Check the IP address to input with the network administrator.
- Source IP Port No. ( 1024 to 65535 )  
Enter the GP's port number.
- \* Please do not use the numbers from 8000 to 8999 because they are the port numbers used for Pro-Server.
- Destination IP Address  
This setting cannot be used.
- Destination IP Port No.  
This setting cannot be used.
- Protocol Type  
This setting cannot be used.

#### 2) Mode Settings

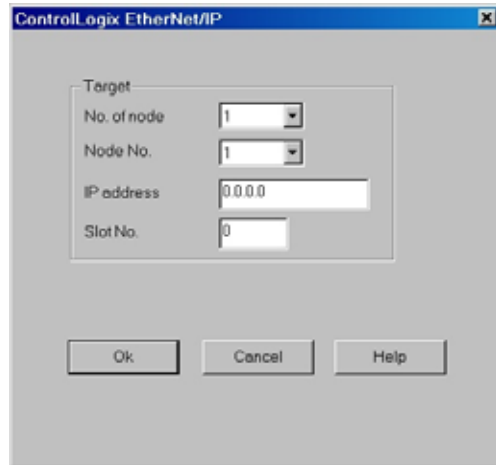


#### 2) Mode Settings

- System Start Address  
The INT device is fixed.  
Array No. and Element No. are set arbitrarily.
- The system start address is assigned to the PLC node designated here.
- \* The system start address cannot be set on the offline. Please set it on this setting screen.

Select [Mode Settings] --> [Network...].

### 3) Setting network Information

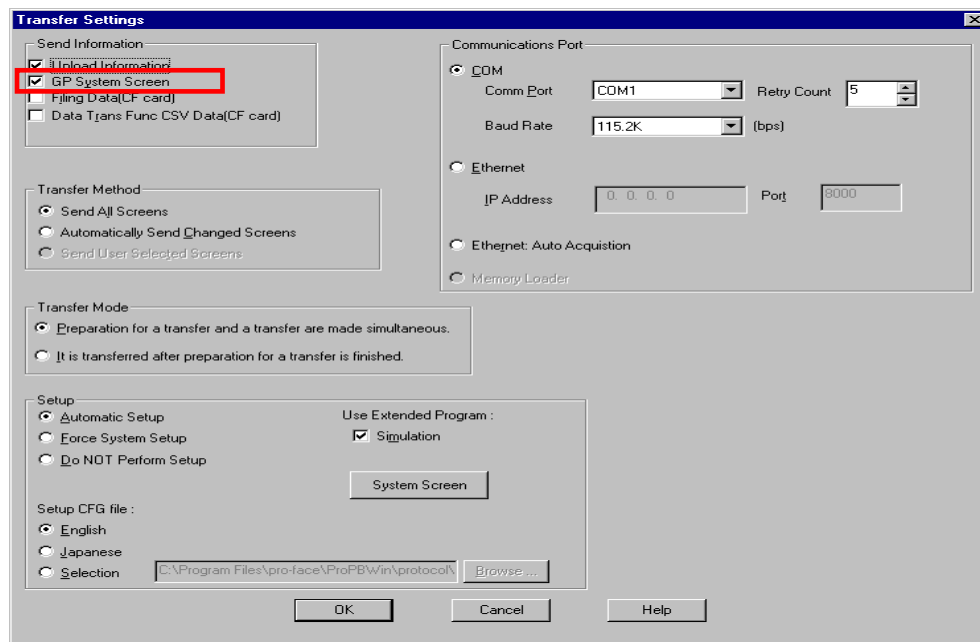


### 3) Setting Network Information

- Target No. of node  
Designate the number of PLCs connected to one GP unit. You can connect up to 2 PLCs.
  - Target Node No.  
Designate the PLC's node number for the IP address. This node number is used when allocating addresses on the edit screen.
  - Target IP address  
Enter your PLC's IP address
  - Target Slot No.  
Enter the PLC slot No. used for installing the CPU unit.
- \* Host Communication Error (02:D0: \*\*) will appear if any slot number other than that of CPU.

Select [Transfer] --> [Setup] --> [Transfer Settings].

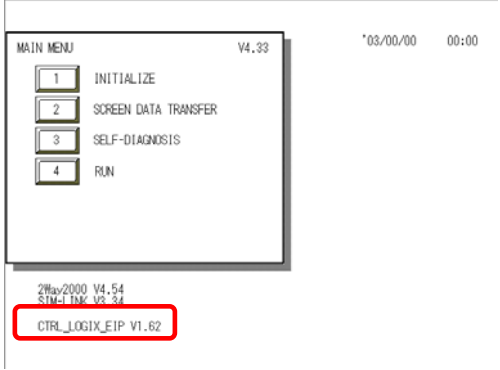
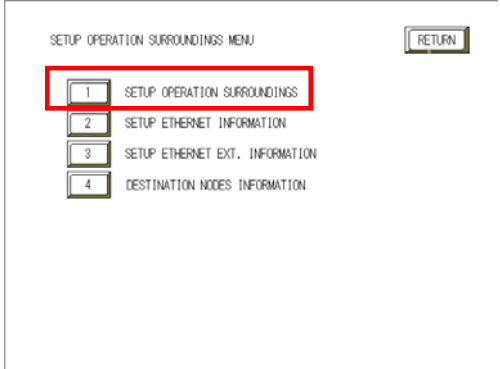
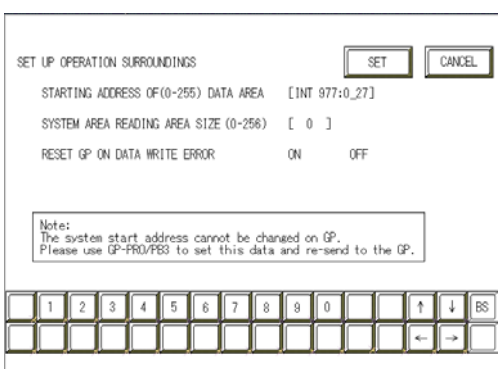
### 4) Transfer Settings



### 4) Transfer Settings      GP System Settings: Checked

Transfer to GP after settings completed.

## 2 [GP Settings]

<p><u>1) Checking GP Type</u></p> 	<p><u>1) Checking GP Type</u></p> <p>If you have selected Rockwell (Allen-Bradley) PLC Control Logix 5000Series Ethernet AB ControlLogix (Ethernet/IP), the following will be shown.</p> <p>“CTRL_LOGIX_EIP”</p>
<p><u>2) Setting up Operation Surroundings</u></p> 	<p><u>2) Setting up Operation Surroundings</u></p> <p>[MAIN MENU] ↓ [INITIALIZE]  [PLC SETUP]  [PLC SETUP]  [SETUP OPERATION SURROUNDINGS]</p>
<p><u>3) Checking System Start Address</u></p> 	<p><u>3) Checking System Start Address</u></p> <p>* The system start address cannot be changed on GP. Please use GP-PRO/PB3 to set this data and re-send to GP.</p> <p>[GP SYSTEM SETUP]  [MODE SETUP]</p>

## 4) Setting Up Ethernet Information

## 4) Setting Up Ethernet Information

Enter each item in the [SETUP ETHERNETINFORMATION] screen.

### • SRC IP ADDRESS (0 to 255)

Enter the IP address for your station's GP unit. To do this, separate the 32 bits of the IP address into four segments of eight bits each, separate those segments with a dot and then enter them as decimal numbers.

### • SRC PORT NO. (1024 to 65535)

Enter your GP's Port No.

\* Please do not use the numbers from 8000 to 8999 because they are the port numbers used for Pro-Server.

## 5) DESTINATION NODE INFORMATION

## U5) Checking Destination Node Information

The destination (PLC) network address, the destination node address, and IP address are displayed here.

\* The destination node information settings cannot be set or changed on GP. Please use GP-PRO PB3 to change them.

[GP SYSTEM SETTINGS]

[MODE SETTINGS]

NETWORK INFORMATION SETTINGS

\*Refer to page 6.

### NOTE

Protocol Type is TCP/IP Connection.